

Shark[®] **ROTATOR**[™]

Model
NV680ANZ



Contents

Thank you for purchasing the **Shark® Rotator™ Powered Lift-Away™ Speed.**

Getting to Know Your Shark® Rotator™ Powered Lift-Away™ Speed Vacuum.....	3
Assembly.....	4
Upright Cleaning.....	5
What Does the Brushroll Indicator Light Mean?.....	5
Above Floor Cleaning.....	6
Powered Lift-Away™ Cleaning.....	7
Lift-Away™ Cleaning.....	7
Maintenance.....	8
Empty the Dust Cup.....	8
Clean the Filters.....	8
Check for Blockages.....	9
Trouble-Shooting Guide.....	10
Warranty.....	14

TECHNICAL SPECIFICATIONS:

Voltage:	220-240V~, 50/60Hz
Main Body Motor Watts:	850W
Power Nozzle Watts:	80W



GMA-102233-EA-013

IMPORTANT SAFEGUARDS

When using an electrical appliance, basic safety precautions should always be observed, including the following:

WARNING

This appliance is not intended for use by persons with reduced physical, sensory or mental capabilities, or lack of experience and knowledge, unless they have been given supervision or instruction concerning use of the appliance by a person responsible for their safety.

Children shall not use or play with this appliance. Close supervision is necessary to keep appliance out of reach of children during use.

CAUTION

THE POWER NOZZLE, WAND, HOSE, AND HANDLE CONTAIN ELECTRICAL CONNECTIONS:

- These are not serviceable parts.
- Do not use to vacuum any liquids.
- Do not immerse in water when cleaning.
- Prior to use, inspect hose, handle/wand for damage. Discontinue using if damaged.

WARNING

TO REDUCE THE RISK OF FIRE, ELECTRIC SHOCK OR INJURY:

- 1 DO NOT use outdoors or on wet surfaces.
- 2 Unplug from electrical outlet when not in use and before cleaning or servicing.
- 3 Inspect power cord or plug for any damage before use. DO NOT use vacuum cleaner with a damaged cord or plug.
- 4 DO NOT use if the appliance is not working, has been dropped, dropped into water, damaged or left outdoors.
- 5 NO SERVICEABLE PARTS. Incorrect re-assembly or repair can cause a risk of electrical shock or injury to persons when the appliance is used. Contact Customer Service.
- 6 The hose contains electrical wires. Do not use when damaged, cut or punctured.
- 7 DO NOT pull or carry vacuum cleaner by the cord or use the cord as a handle.
- 8 DO NOT unplug by pulling on cord; to unplug, grasp the plug, not the cord.
- 9 DO NOT handle plug or vacuum cleaner with wet hands.
- 10 DO NOT run the vacuum cleaner over the power cord, close a door on the cord or pull cord around sharp corners.
- 11 The use of an extension cord is not recommended.
- 12 DO NOT leave vacuum cleaner unattended when plugged in.
- 13 Keep cord away from heated surfaces.
- 14 Turn off all controls before plugging or unplugging the vacuum cleaner.
- 15 Always turn off the vacuum cleaner before connecting or disconnecting power nozzle.
- 16 Store your vacuum cleaner with the power cord secured around the two cord holders.

GENERAL USE

- 17 Use only as described in this manual.
- 18 DO NOT put any objects into openings. DO NOT use with any opening blocked; keep free of dust, lint, hair, and anything that may reduce air flow.
- 19 Keep your work area well lit.
- 20 Keep the vacuum cleaner moving over the carpet surface at all times to avoid damaging the carpet fibers.
- 21 DO NOT place vacuum cleaner on unstable surfaces such as chairs or tables.
- 22 DO NOT use without dust cup and/or filters in place.
- 23 DO NOT step on, run over, or bend hose. The hose is powered by electrical wires that may be damaged as a result.

HOSE ATTACHMENTS

- 24 DO NOT use if air flow is restricted; if the air paths, the hose, or the accessories become blocked, turn the vacuum cleaner off. Remove all obstructions before you turn on the unit again.
- 25 Keep the end of the hose and accessory openings away from face and body.
- 26 Keep cleaning tools and hose suction openings away from hair, face, fingers, uncovered feet, or loose clothing.
- 27 Only use manufacturer's recommended attachments.

DUST CUP/FILTERS/ACCESSORIES

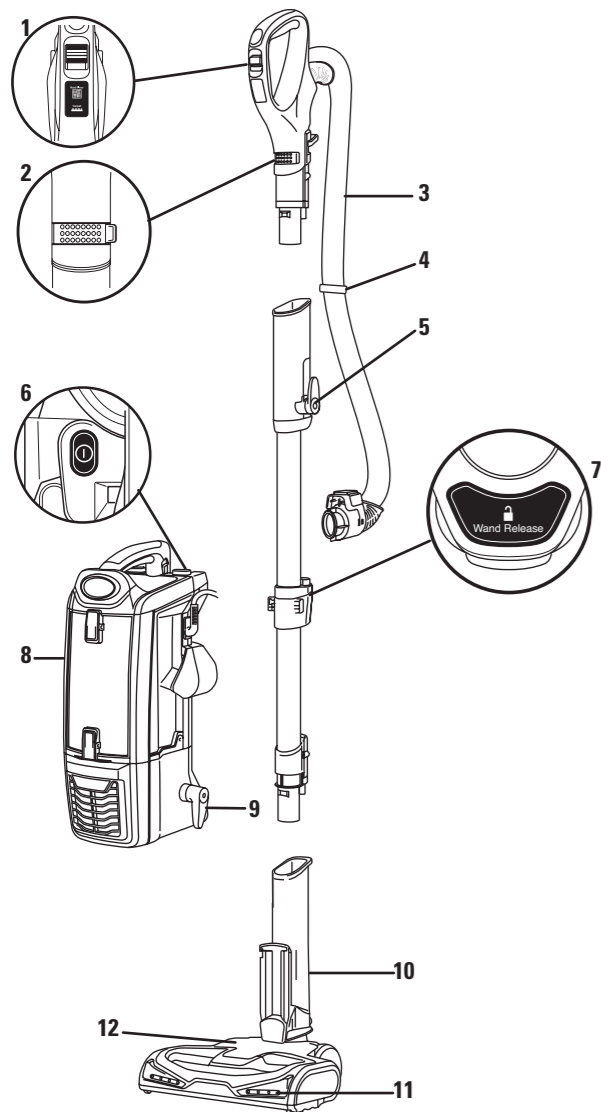
Before turning on the vacuum:

- 28 Make sure that all filters are thoroughly dry after routine cleaning.
- 29 Make sure that dust cup and all filters are in place after routine maintenance.
- 30 Make sure accessories are free of blockages.
- 31 Use only manufacturer's recommended accessories and replacement parts.

GENERAL CLEANING

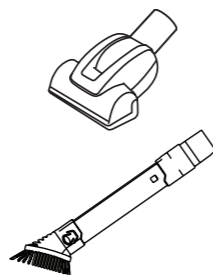
- 32 DO NOT pick up large-sized objects.
- 33 DO NOT pick up hard or sharp objects such as glass, nails, screws or coins that could damage the vacuum cleaner.
- 34 DO NOT use to pick up drywall dust.
- 35 DO NOT pick up smoking or burning objects such as hot coals, cigarette butts, fireplace ash or matches.
- 36 DO NOT pick up flammable or combustible materials such as lighter fluid, gasoline, or kerosene or use vacuum in areas where they may be present.
- 37 DO NOT pick up toxic solutions such as chlorine bleach, ammonia, or drain cleaner.
- 38 DO NOT use in an enclosed space where vapors are present from paint, paint thinner, moth-proofing substances, flammable dust or other explosive or toxic materials.
- 39 DO NOT vacuum up any liquids.
- 40 DO NOT immerse vacuum cleaner in water or other liquids.
- 41 DO NOT use outdoors or on wet surfaces; use only on dry surfaces.
- 42 Use extra care when cleaning on stairs.
- 43 Remove brushroll from unit before rinsing.

SAVE THESE INSTRUCTIONS



MAIN UNIT

- | | |
|--------------------|------------------------------|
| 1 Surface Selector | 7 Wand Release |
| 2 Suction Control | 8 Lift-Away Pod |
| 3 Hose | 9 Lower Cord Hook |
| 4 Hose Clip | 10 Motorized Floor Nozzle |
| 5 Upper Cord Hook | 11 Headlights |
| 6 Power Switch | 12 Brushroll Indicator Light |



Pet Power Brush

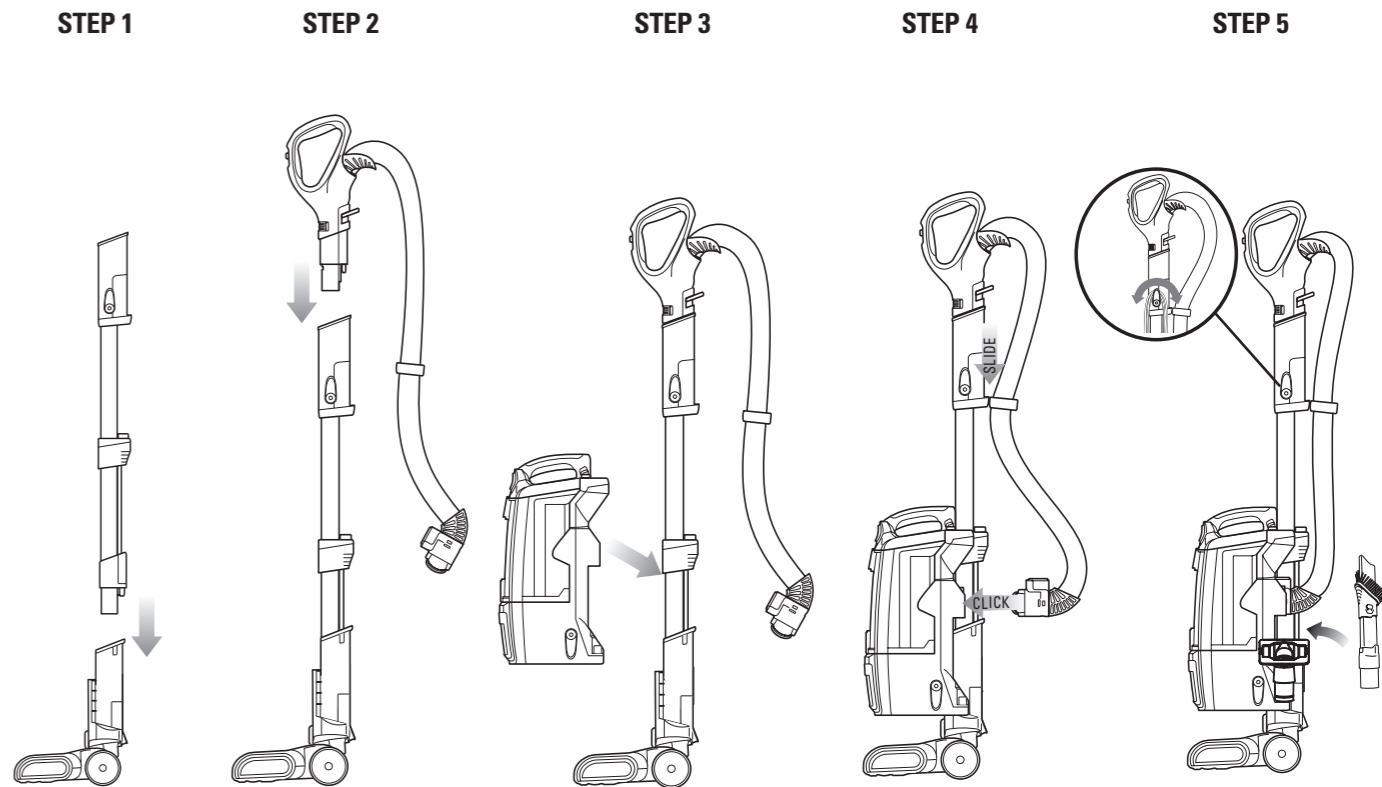
188FL1680

Designed for removal of pet hair and ground in dirt from carpeted stairs and upholstery.

Dusting Genie/2-in-1 Crevice Tool

189FL1680

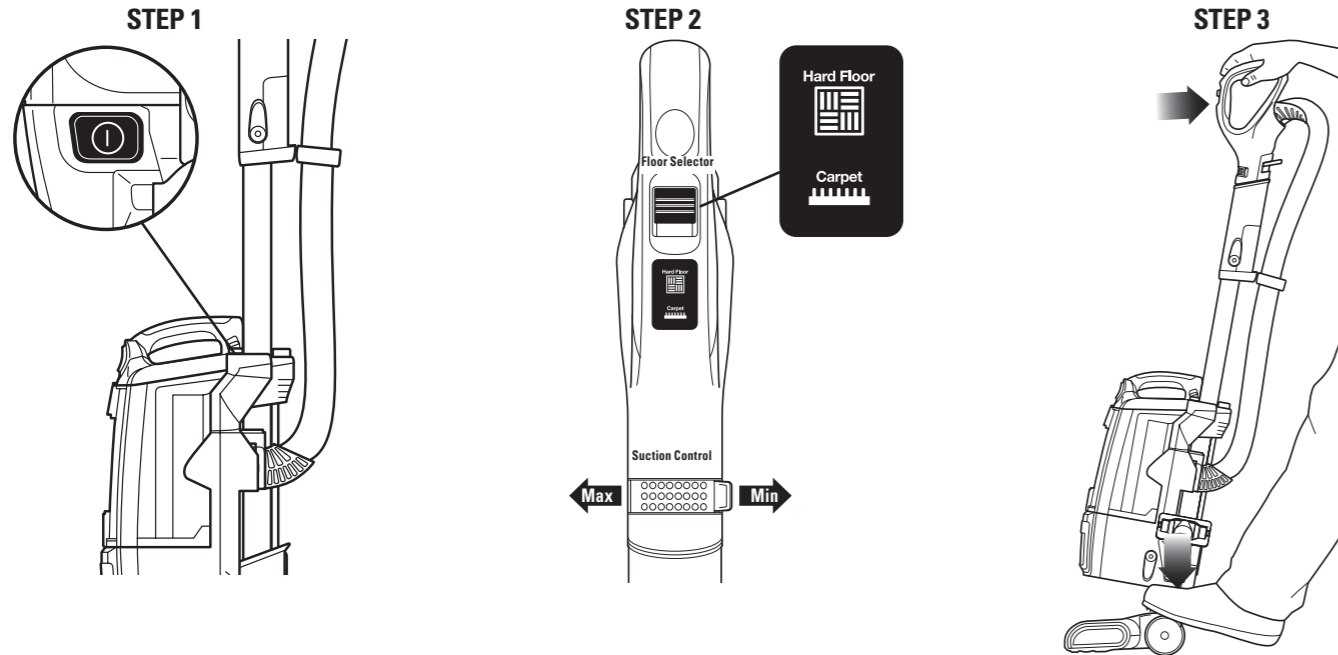
Two cleaning tools in one. The crevice tool gives you extended cleaning reach for small spaces, while the dusting brush cleans a multitude of surfaces.



- | | | |
|---------------------------------------------------------------------|---------------------------------------------------------------|----------------------------------------------------------------------------------------------------------|
| 1 Place the selected floor nozzle on the floor and insert the wand. | 3 Slide the pod onto the wand. | 5 Insert the dusting genie and pet power brush into the accessory posts as shown. |
| 2 Insert the handle into the wand. | 4 Slide the hose clip into the notch at the back of the wand. | TIP: For quick cord access, rotate upper hook down and remove cord. Rotate back for cord storage. |

UPRIGHT CLEANING

- ⚠ **WARNING:** To reduce the risk of electric shock, unplug the unit before assembling, adding or removing attachments or converting modes.
- ⚠ **WARNING:** Always ensure the power is OFF before plugging and unplugging.
- NOTE:** DO NOT use to pick up drywall dust or fireplace ash.



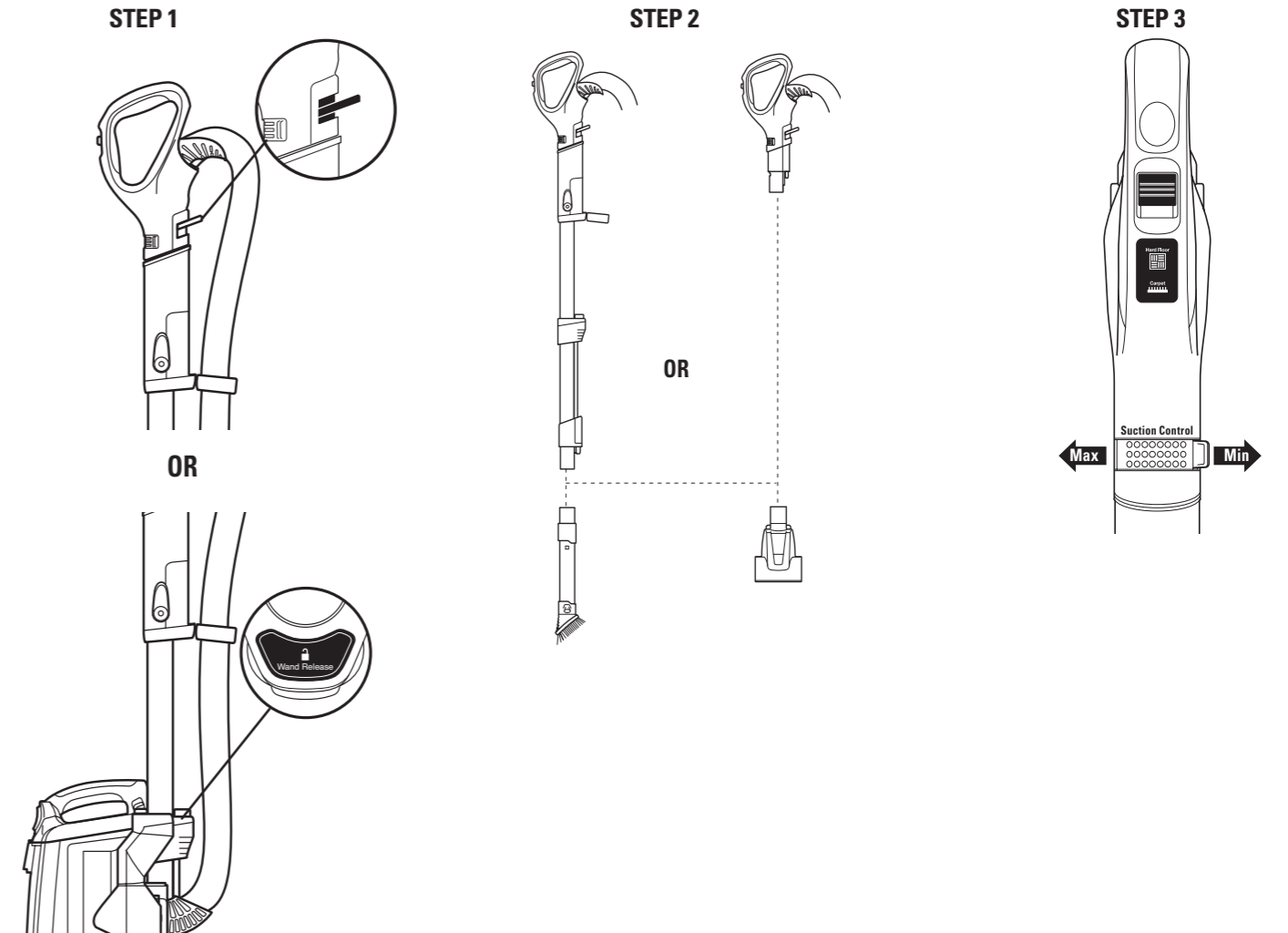
- 1** Plug in power cord into electrical outlet and press POWER button to turn vacuum on.
- 2 Hard Floor Cleaning**
Set Floor Selector to **Hard Floor** and Suction Control to **Max** for full suction or variable depending on user preference. *Both the motorized floor nozzle and the Shark Dust Away™ heads can be used on hard floors.*
Thick Carpet & Area Rugs Cleaning
Set Floor Selector to **Carpet** and Suction Control to **Min** for reduced suction or variable depending on user preference.
Carpet Cleaning
Set Floor Selector to **Carpet** and Suction Control to **Max** for full suction or variable depending on user preference.
- 3** Place your left foot gently on the floor nozzle and tilt the handle back to start cleaning. Note: The brushroll will only spin once the vacuum is reclined back.

WHAT DOES THE BRUSHROLL INDICATOR LIGHT MEAN?

- **Solid Green:** The brushroll is on and working as it should.
- **Solid Red:** There is a jam in the brushroll area. Turn your vacuum off and remove the blockage.
- ***Flashing Red:** The motorized floor nozzle is overheating. Turn your vacuum off and wait for it to cool down. *See Troubleshooting section for further instructions.

ABOVE FLOOR CLEANING

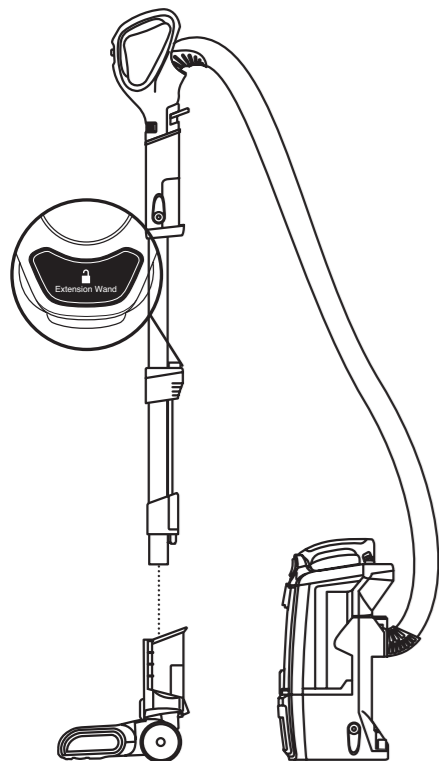
NOTE: DO NOT use to pick up drywall dust or fireplace ash.



- 1** For above floor cleaning with the hose, press the WAND or HANDLE release (depending on the amount of reach required) then lift handle up.
- 2** Insert wand or handle directly into desired tool.
- 3** This unit is equipped with SUCTION CONTROL to help when dusting delicate objects or drapery. Located at base of the handle, slide the SUCTION CONTROL tab to minimize suction. Be sure to close again for maximum suction.

POWERED LIFT-AWAY™ CLEANING

STEP 1

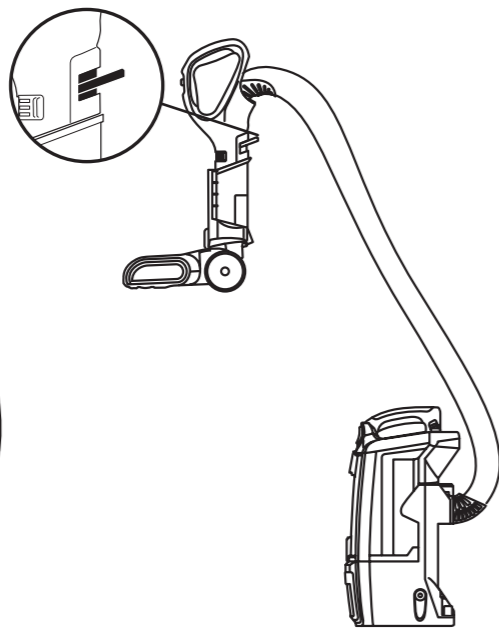


- 1 Press LIFT-AWAY button to lift the pod off the floor nozzle.

Insert the WAND into the motorized floor nozzle.

TIP Using the vacuum in Powered Lift-Away mode gives you extended reach for cleaning under furniture and in tight spaces.

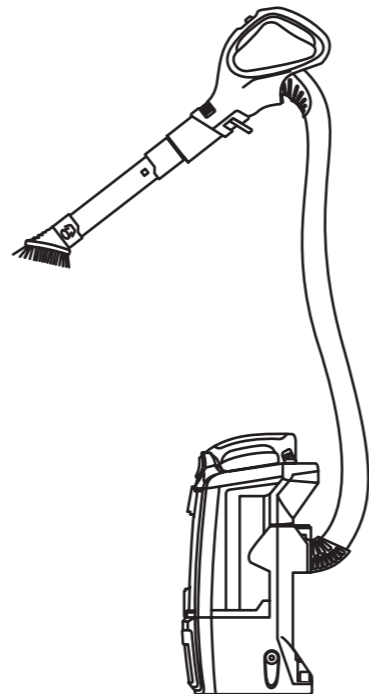
STEP 2



- 2 Insert the HANDLE into the motorized floor nozzle.

TIP Attaching the HANDLE directly into the nozzles makes cleaning stairs easy.

LIFT-AWAY™ CLEANING



- 1 Attach the desired accessory directly into the HANDLE.

TIP For an extended reach, attach the desired accessory into the WAND.

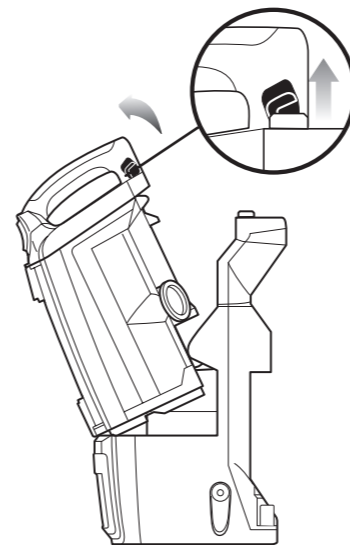
MAINTENANCE

To keep your vacuum's suction power optimal, follow these instructions.

Make sure unit is off and cord unplugged.

IMPORTANT: Allow ALL filters to dry completely before replacing into the vacuum.

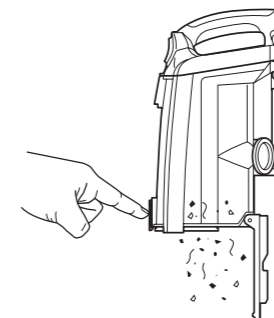
STEP 1



EMPTY THE DUST CUP

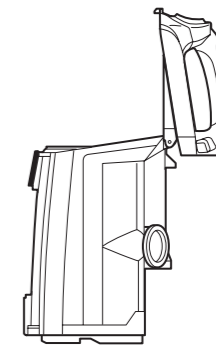
- 1 Pull up on the dust cup release latch and lift the dust cup off the pod.

STEP 2



- 2 Holding the dust cup over a garbage bag or can, press the bottom empty release latch.

STEP 3



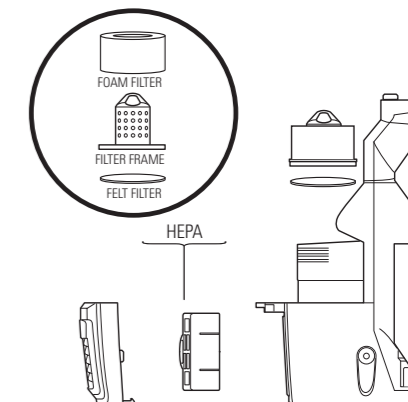
- 3 Press the top dust cup release latch to access the dust screen and remove built-up debris as required.

CLEAN THE FILTERS

- 1 With the dust cup removed, remove and rinse the foam and felt filters every 3 months. Let air dry completely before replacing. Hand wash only. Tap loose dirt off filters between washes as needed.

- 2 Once a year open the filter grill and remove and rinse the HEPA filter. Let air dry completely before replacing. Hand wash only.

WARNING: DO NOT PICK UP FIREPLACE ASH OR DRYWALL DUST.



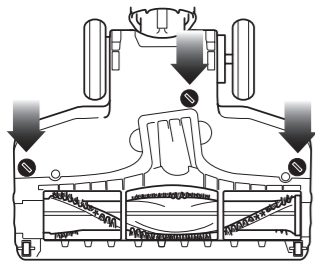
RECOMMENDED FILTER CLEANING SCHEDULE:

Pre-motor Filter Kit (Foam & Felt): **XFF680** Every 3 months
Post Motor Filter: **XHF680** Every year

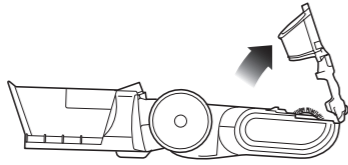
MAINTENANCE

To keep your vacuum's suction power optimal, follow these instructions. Make sure unit is off and cord unplugged.

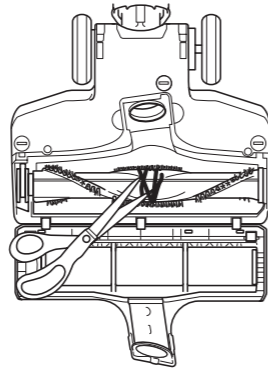
STEP 1



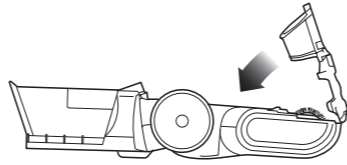
STEP 2



STEP 3



STEP 4



CHECK FOR BLOCKAGES

- 1 Use a coin to unlock the 3 locks on the bottom of the floor nozzle.
- 2 A portion of the base is removable to allow for better access to the brush roll and exposure to the airway. Shine a flashlight from the bottom to check for possible blockage in the airway.
- 3 Remove any string, carpet fibers or hair that may be wrapped around the brush roll. There is a groove on the brush bar that allows a pair of scissors to cut across it to loosen up the debris.
- 4 To reassemble, replace base by lining it up along the front of the nozzle. Push down to snap into place. Lock the 3 locks.

TROUBLE-SHOOTING GUIDE

Vacuum is not picking up dirt. No suction or light suction

- Check filters to see if they need cleaning. Follow instructions for rinsing and drying the filters before re-inserting back into the vacuum.
- Dust cup may be full; empty dust cup.
- Check hose, hose connections, nozzles, and accessories for blockages; clear blockages if required.
- Remove any string, carpet fibers or hair that may be wrapped around the brushroll.

Vacuum lifts area rugs

- Turn off the unit to disengage the brushroll and restart with the POWER button for suction only cleaning.
- Suction is powerful. Take care when vacuuming area rugs or rugs with delicately sewn edges.
- Turn off the unit and disengage the area rug from the brushroll and restart the unit.

Brush roll does not spin

- If brush roll indicator light on the floor nozzle turns red, the brush roll has stopped spinning. Immediately turn off and unplug vacuum, disconnect the nozzle and remove blockage before reconnecting and turning vacuum back on.
- Pull the handle toward you and release the floor nozzle to disengage the auto-off feature.
- Make sure that the carpet height selector is not on the HARD FLOOR setting.
- Immediately turn off and unplug vacuum, disconnect the nozzle and remove blockage before reconnecting and turning vacuum back on.

Vacuum turns off on its own or indicator light flashes red

- This vacuum cleaner is equipped with a motor protective thermostat. If for some reason your vacuum overheats, the thermostat will automatically turn the suction motor off. Should this occur, perform the following steps to restart the thermostat:
 1. Turn the unit off.
 2. Unplug the vacuum.
 3. Empty the dust cup and clean filters (see page previous page)
 4. Check for blockages in hose, accessories and inlet openings.
 5. Allow the unit to cool for a minimum of 45 minutes.
 6. Plug in the vacuum.
 7. Restart the unit by turning the power on.
- Note: If vacuum still does not start, contact Customer Service at: AUST: 1800 890 840 or NZ: 0800 002 999.

Shark®

Distributed by:

Brand Developers Aust Pty Ltd

461 Plummer Street
PORT MELBOURNE, VIC 3207
FAX: +61 3 9681 7825
AUST Customer Care: 1800 890 840



Brand Developers Ltd

Unit H, 686 Rosebank Road,
Avondale, 1026 Auckland,
NEW ZEALAND
FAX: +64 9 306 8203
NZ Customer Care: 0800 002 999



E1633

GMA-102233-EA-013