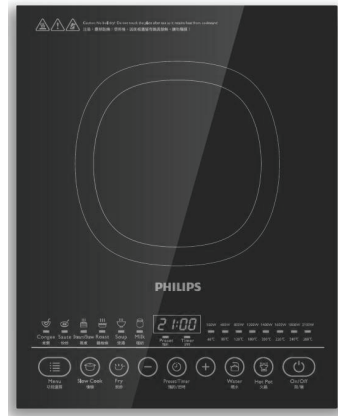


Always there to help you

Register your product and get support at

www.philips.com/welcome

HD4937

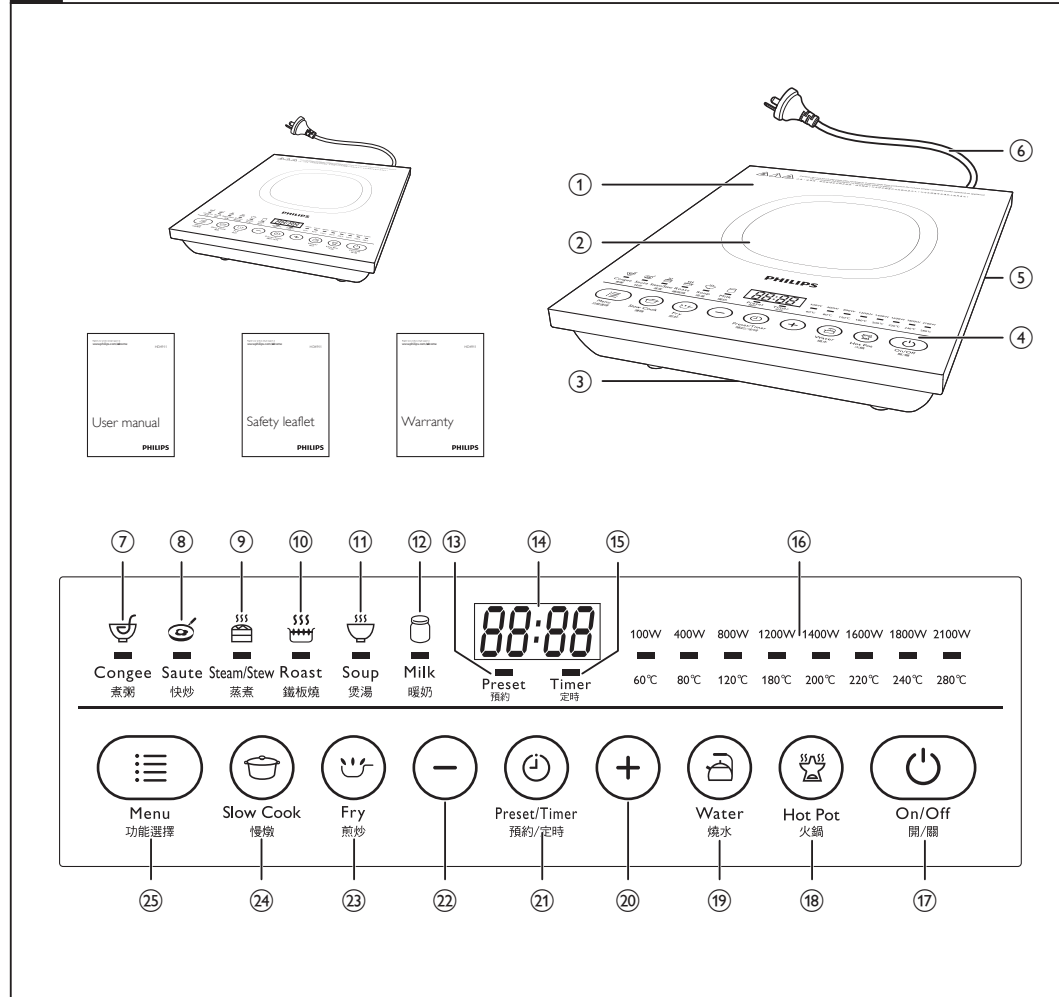


User manual

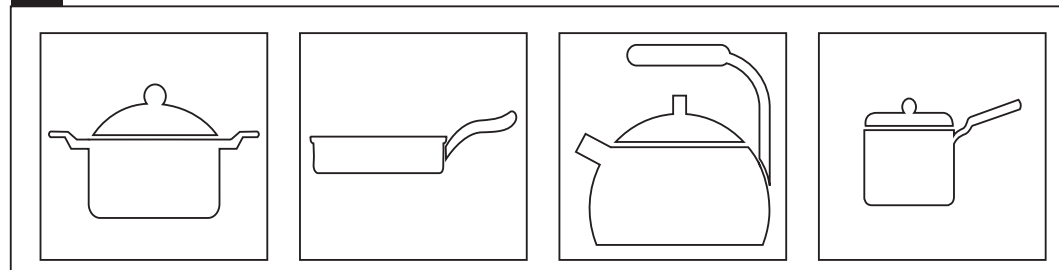
PHILIPS



Overview



Recommended types and sizes of cookware

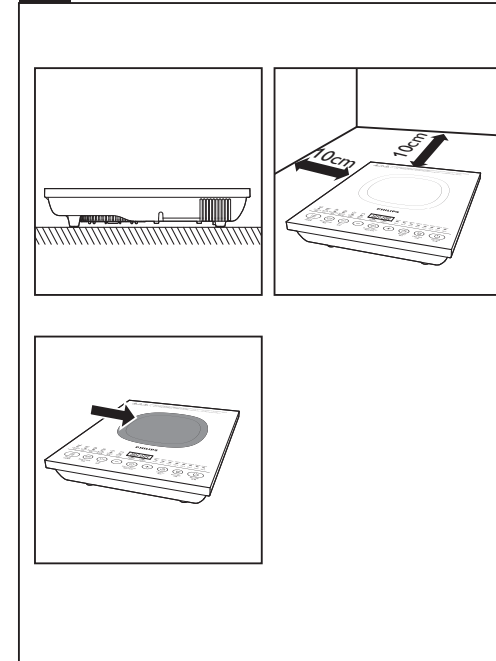


Specifications are subject to change without notice
© 2015 Koninklijke Philips N.V.
All rights reserved.

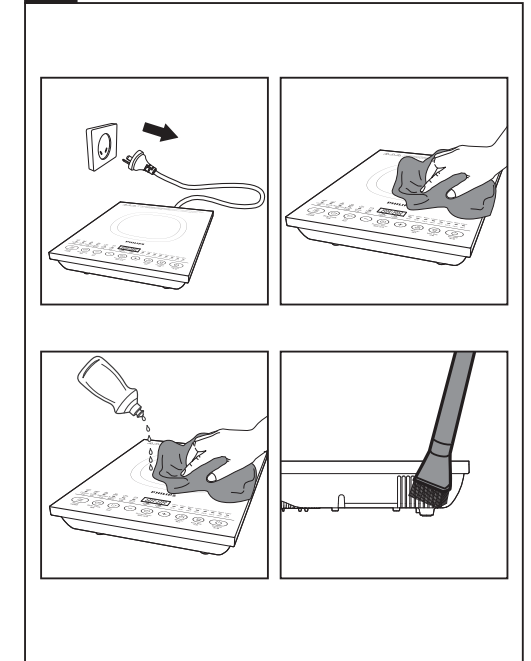
HD4937_AUS_UM_v1.0_150703



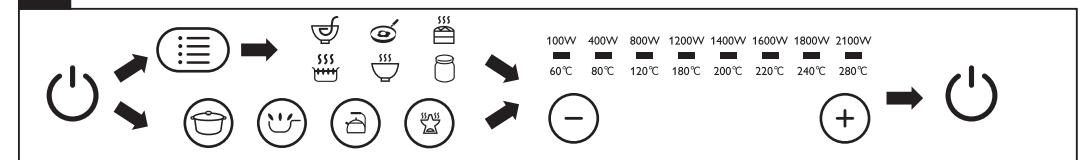
Preparing for use



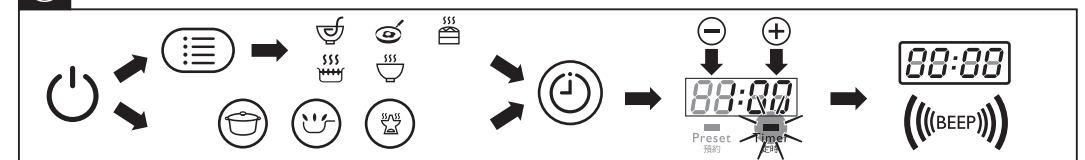
Cleaning



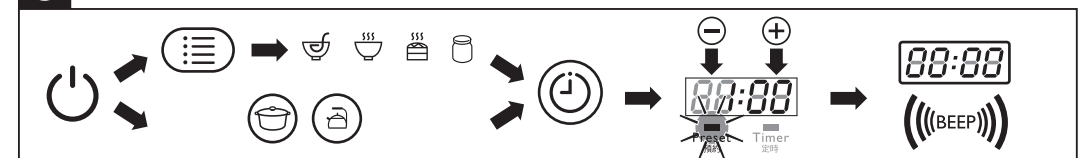
Using the induction cooker



Using the timer



Preset time for delayed cooking



1 Your induction cooker

Congratulations on your purchase and welcome to Philips! To fully benefit from the support that Philips offers, register your product at www.philips.com/welcome.

2 What's in the box

Induction cooker main unit Warranty card
Important information leaflet User manual

Overview

①	Cooking plate	④	Control panel
②	Cooking zone	⑤	Air outlets
③	Air inlet	⑥	Power cord

Controls overview

⑦	Congee button	⑰	On/Off button
⑧	Saute button	⑱	Hot Pot button
⑨	Steam/Stew button	⑲	Water button
⑩	Roast button	⑳	Increase button
⑪	Soup button	㉑	Preset/Timer button
⑫	Milk button	㉒	Decrease button
⑬	Preset indicator	㉓	Fry button
⑭	Display screen	㉔	Slow Cook button
⑮	Timer indicator	㉕	Menu button
⑯	Cooking power and temperature		

4 Before first use

Remove all packaging materials from the induction cooker.

Preparing for use

- Place the appliance on a dry, stable and level surface.
- Make sure there is at least 10cm free space around the appliance to prevent overheating.
- Always place the cookware on the cooking zone during cooking.
- Make sure you use cookware of the correct types and sizes (see the table below).

Recommended types and sizes of cookware

Material	Cookware with a bottom made of iron or magnetic stainless steel
Shape	Cookware with a flat bottom
Size	Cookware with a bottom diameter of 12-23cm, depending on the cooking mode

5 Using the induction cooker

There are ten cooking modes: Congee (☺), Saute (☞), Steam/Stew (☑), Roast (☑), Soup (☺), Milk (☒), Slow Cook (☑), Fry (☞), Water (☑) and Hot Pot (☑).

- Follow the steps in "Preparing for use".
- Press the On/Off button (⏻), the On/Off indicator lights up.
- Press the cooking buttons or the Menu button to choose the desired cooking mode. The corresponding indicator lights up and the induction cooker starts working in the selected mode.
- When the cooking is finished, press the On/Off button (⏻) to switch off the appliance.
- Unplug the induction cooker after the fan stops working.

Note

- During cooking, you can change the power level by pressing the Increase (+) or Decrease (−) button.
- In Water (☑), Soup (☺), Steam/Stew (☑), Congee (☺) and Milk (☒) modes, the cooking power automatically changes for better cooking result.

Default cooking time and temperature

Refer to below table for the default cooking time and temperature of different cooking modes.

Cooking mode	Default cooking time (Minutes)	Default cooking temperature
Congee (☺)	180	100°C
Saute (☞)	120	200 (±20)°C
Steam/Stew (☑)	60	100°C
Roast (☑)	120	200 (±20)°C
Soup (☺)	180	100°C
Milk (☒)	20	60 (±20)°C
Slow Cook (☑)	360	85-100°C
Fry (☞)	120	200 (±20)°C
Water (☑)	20	100°C
Hot Pot (☑)	120	100°C

Note

- Depending on the cookware being used or the ingredients in the cookware, the actual cooking temperature may be different.

Using the timer

You can use the Preset/Timer button to decide how much time you want the appliance to work at different cooking modes (not applicable in Water (☑) and Milk (☒) modes).

- Follow the steps in "Preparing for use".
- Press the On/Off (⏻) button, the On/Off (⏻) indicator lights up.
- Choose the desired cooking mode.
- Press the Preset/Timer button (⌚) once or more times until the timer indicator lights up.
- Press the Increase (+) or Decrease (−) button to adjust the time.

- When the time has elapsed, the induction cooker turns off automatically.

Note

- After you have selected the cooking time, wait for a few seconds before the induction cooker automatically confirms it.
- After the timer is set, you can press the Preset/Timer button (⌚) again to cancel the timer.

Preset time for delayed cooking

You can use the Preset/Timer button (⌚) to set the time at which you want the appliance to start cooking. The preset timer is available up to 24 hours.

- Follow the steps in "Preparing for use".
- Press the On/Off button (⏻), the On/Off indicator lights up.
- Choose the desired cooking mode.
- Press the Preset/Timer button (⌚) once or more times until the preset indicator lights up.
- Press the Increase (+) or the Decrease (−) button to choose the desired preset time.
- When the preset time has elapsed, you will hear a few beeps and the induction cooker starts working automatically.

Note

- The preset timer is available in the following cooking modes: Congee (☺), Steam/Stew (☑), Soup (☺), Milk (☒), Slow Cook (☑) and Water (☑).
- After you have selected the preset time, wait for a few seconds before the induction cooker automatically confirms it.
- When the induction cooker is at preset mode, you can press the Preset/Timer button (⌚) again to cancel the preset time.

6 Cleaning

- Unplug the appliance after the fan stops working and let it cool down.
- Clean the appliance with a damp cloth and, if necessary, with some mild cleaning agent.

7 Recycling

Do not throw away the product with the normal household waste at the end of its life, but hand it in at an official collection point for recycling. By doing this, you help to preserve the environment.

8 Guarantee and service

If you need service or information or if you have a problem, please visit the Philips website at www.philips.com or contact the Philips Consumer Care Centre in your country (you will find its phone number in the worldwide guarantee leaflet). If there is no Consumer Care Centre in your country, go to your local Philips dealer.

9 Troubleshooting

If your induction cooker does not function properly or if the cooking quality is insufficient, consult the table below. If you are unable to solve the problem, contact a Philips service centre or the Consumer Care Centre in your country.

Problem	Solution
The On/Off button (⏻) does not respond.	There is a connection problem. Check if the induction cooker is connected to the mains and if the plug is inserted firmly into the wall socket
The appliance beeps continuously and then stops working.	You may have put unsuitable cookware on the cooking plate or you may have removed the cookware from the cooking plate during cooking. Make sure the cookware is made of steel, iron or aluminum with stainless steel cladding base and has a base diameter larger than 12cm. You may have placed the cookware outside of the cooking zone.
The cookware does not heat up to the required temperature.	The bottom of the cookware may not be flat. Use cookware with a flat bottom. If the problem still exists, take the appliance to your Philips dealer or a service center authorised by Philips.
The appliance stops working suddenly.	The temperature of the cookware might be too high. Let the cookware cool down for a while.
The cooking temperature of the preset modes are too high or too low.	During cooking, you can change the power level by pressing the Increase (+) or Decrease (−) button.
When I press one of the cooking mode buttons, the light of the selected mode does not go on.	The light is defective. Take the appliance to your Philips dealer or a service centre authorised by Philips.
The cooking temperature automatically changes in some preset modes.	In Water (☑), Soup (☺), Steam/Stew (☑), Congee (☺) and Milk (☒) modes, the cooking temperature automatically changes for better cooking result.
Error code E1, E2, E3, E4, or E7 is displayed on the screen.	The induction cooker has malfunction. Take the appliance to your Philips dealer or a service center authorised by Philips.
Error code E5 or E6 is displayed on the screen.	The voltage is either too high or too low. Check if the voltage in your home is suitable for the induction cooker.