



Complete Care Bagged Vacuum Cleaner

Model Number VC435

INSTRUCTION MANUAL

After Sales Support

Telephone: 1300 886 649
Email: info@tempoaustralia.com.au



N13275

Contents

- 01 Warranty Details**
- 02 Welcome**
- 03 General Safety Instructions**
- 06 Product Overview**
- 08 Getting Started**
- 10 Instructions**
- 13 Other Useful Information**

After Sales Support

Telephone: 1300 886 649
Email: info@tempoaustralia.com.au



STIRLING[®]

Complete Care Bagged Vacuum Cleaner

Warranty Details

The product is guaranteed to be free from defects in workmanship and parts for a period of 36 months from the date of purchase. Defects that occur within this warranty period, under normal use and care, will be repaired, replaced or refunded at our discretion, solely at our option with no charge for parts and labour. The benefits conferred by this warranty are in addition to all rights and remedies in respect of the product that the consumer has under the Competition and Consumer Act 2010 and similar state and territory laws.

Our goods come with guarantees that cannot be excluded under the Australian Consumer Law. You are entitled to a replacement or refund for a major failure and to compensation for any other reasonably foreseeable loss or damage. You are also entitled to have the goods repaired or replaced if the goods fail to be of acceptable quality and the failure does not amount to a major failure.

After Sales Support

Telephone: 1300 886 649
Email: info@tempoaustralia.com.au



Welcome

Congratulations on choosing to buy a Stirling® product.

All products brought to you by Stirling® are manufactured to the highest standards of performance and safety and, as part of our philosophy of customer service and satisfaction, are backed by our comprehensive 3 Year Warranty. We hope you will enjoy using your purchase for many years to come.

General Safety Instructions

Read this manual thoroughly before first use, even if you are familiar with this type of product. The safety precautions enclosed herein reduce the risk of fire, electric shock and injury when correctly adhered to. Keep the manual in a safe place for future reference, along with the completed warranty card, purchase receipt and carton. If applicable, pass these instructions on to the next owner of the appliance.

Always follow basic safety precautions and accident prevention measures when using an electrical appliance, including the following:

Electrical safety and cord handling

- **Correct voltage:** Make sure your local outlet voltage and circuit frequency correspond to the voltage indicated on the appliance rating label.
- **Safe connection:** Insert the plug firmly into a properly earthed mains socket. Do not alter the plug.
- **Protect from moisture:** To protect against electric shock, do not immerse the cord, plug or the appliance itself in water or other liquid. Ensure your hands are dry before handling the plug or switching on the appliance. Do not use it outdoors or on wet surfaces.
- **Protect the power cord.** Do not kink or damage the power cord. Do not wrap it around the appliance. Do not pull or carry the vacuum cleaner by the cord. Do not use the cord as a handle, close a door on the cord or pull the cord around sharp edges or corners. Do not run the vacuum cleaner over the cord. Keep the cord away from heated surfaces.
- **Disconnect after use:** Always switch off the appliance first and then unplug the cord from the outlet when you have finished vacuuming, before connecting or changing accessories and before changing the dust bag or filters.
- **Cord retraction:** When unplugging, grip the plug, do not pull the cord. Press the cord retraction pedal and hold the plug, guiding it back onto the cord reel to prevent whipping and causing injury or damage.

This vacuum cleaner is equipped with a plug and a power supply cord that automatically retracts. If anything is damaged, both the plug and the cord must be repaired by a qualified repairer or electrician.

- **Unattended:** Do not leave the vacuum cleaner unattended when plugged in.
- **RCD:** The installation of a residual current device (safety switch) is recommended to provide additional safety protection when using electrical appliances. It is advisable that a safety switch with a rated residual operating current not exceeding 30mA be installed in the electrical circuit supplying the appliance. See your electrician for professional advice.

After Sales Support

Telephone: 1300 886 649
Email: info@tempoaustralia.com.au

General Safety Instructions (Cont.)

Usage conditions and restrictions

- **Domestic use only:** This appliance is intended for indoor household use only. It is neither suitable for commercial/industrial, nor for outdoor use.
- **Intended purpose:** Only use the vacuum cleaner on dry indoor surfaces, as described in this manual and with the original accessories supplied. Do not use it for any purpose other than described in this manual. Any other use is not recommended and may cause fire, electric shock or injury, or compromise the safety of the appliance and void the warranty.
- **Handle with caution:** These instructions are not intended to cover every possible condition and situation. As with any electrical household appliance, common sense and caution are therefore always recommended when assembling, operating and maintaining the appliance.
- **Accessories:** Improper assembly or use, and use of accessories from other brands, may result in the risk of fire, electric shock and/or injury to persons.
- **Usage restrictions:** This appliance is not intended for use by persons (including children) with reduced physical, sensory or mental capabilities, or lack of experience and knowledge unless they have been given supervision or instructions concerning use of the appliance by a person responsible for their safety.
- **Children:** This vacuum cleaner is not a toy. Supervise young children to ensure they do not play with the appliance. Close supervision is necessary when any appliance is used by or near children.
- **Prevent injury:** Keep hair, loose clothing, fingers and all parts of the body away from openings and moving parts. Keep openings away from moving parts. Do not point the vacuum cleaner at people or animals when in use.
- **Prevent blockage:** Do not put any objects into openings. Keep all openings free of dust, lint, hair or anything that may reduce the airflow. Do not use the product with any openings blocked or restricted airflow.
- **IMPORTANT:** If the suction opening, hose or telescopic tube is blocked, switch off the appliance and remove the blockage before restarting.
- **Protect the appliance:** Keep the vacuum cleaner away from heat sources (radiator, oven, etc.), direct sunlight, moisture and sharp edges. Do not operate it too close to a heater.
- **Filter installation:** Do not use the product without all the filters in place.
- **Stairs:** Take extra care when vacuuming on stairs.

General Safety Instructions (Cont.)

- **Do not use the vacuum cleaner to pick up:**
 - Flammable or combustible fluids (such as fuel or solvent), burning substances (such as ash, cigarettes or hot coals), or use it in the presence of explosive liquids or vapours;
 - Hard or sharp objects such as shards of glass, nails, coins;
 - Harmful or toxic materials (such as chlorine bleach, ammonia, drain cleaner);
 - Any liquids, or vacuum in areas where liquids may be present.
- **After use:** Put the vacuum cleaner away after every use to prevent anyone tripping over it.
- **Cleaning:** Only clean the housing with a soft, dry cloth. Do not use liquid or aerosol cleaners.
- **Repair:** Never attempt to open the motor base of the vacuum cleaner yourself, or to replace the power cord. Only have the appliance repaired by an authorised technician, or contact the after sales support line for advice.
- **Storage:** Store the appliance in a cool, dry indoor area, out of reach of young children.
- **Damage:** Check the appliance and power cord regularly for visible damage. Do not use it if the cord or housing is damaged, if it has been dropped, damaged, left outdoors or dropped into water, or if it appears faulty.

A damaged cord must be replaced by the manufacturer, an authorised service centre or similarly qualified personnel in order to avoid any hazards.

In case of damage, contact our after sales support line to arrange return or repair of the damaged product.
- **Liability:** We accept no liability for any eventual damages or injury caused by noncompliance with these instructions.

After Sales Support

Telephone: 1300 886 649
Email: info@tempoaustralia.com.au

Product Overview

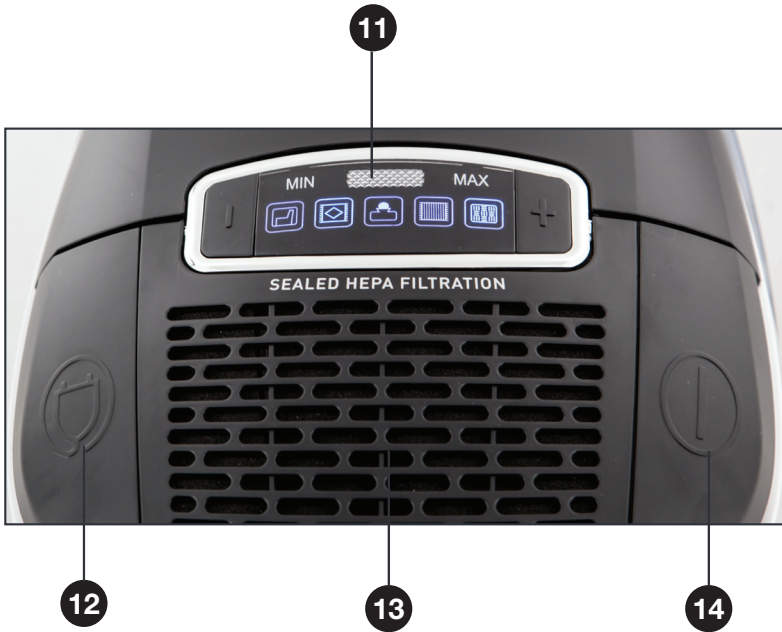
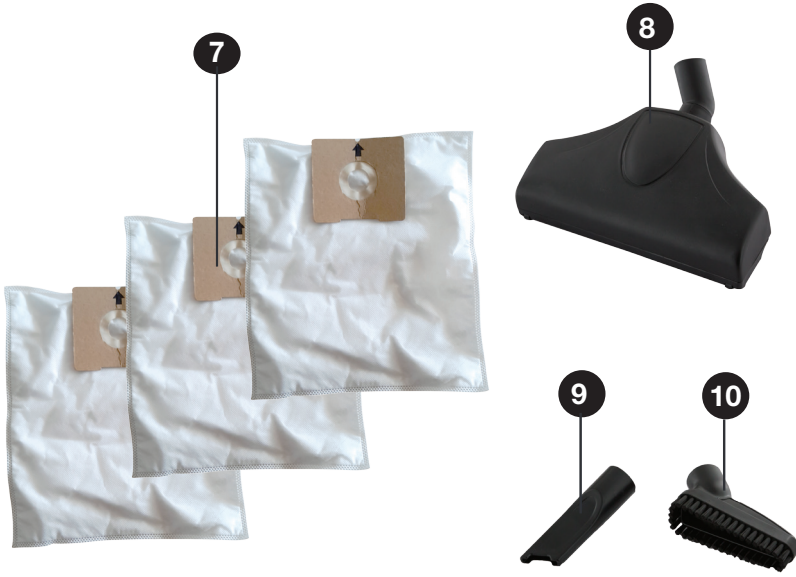
The assembled vacuum cleaner

- 1 Suction control
- 2 Telescopic tube
- 3 Flexible hose
- 4 Vacuum cleaner body
- 5 Carry handle
- 6 Dual use floor brush
- 7 Disposable dust bags*
- 8 Turbo brush
- 9 Crevice tool
- 10 Brush tool
- 11 Dust bag full indicator
- 12 Cord retraction pedal
- 13 HEPA filter compartment
- 14 On/Off pedal



* Replacement dust bags and filters are available for purchase from our after sales support centre. Please refer to page 17 for more information.

Product Overview (Cont.)



Getting Started

Before first use

- Unpack the appliance but keep all packaging materials until you have made sure your new vacuum cleaner is undamaged and in good working order. Plastic wrapping can be a suffocation hazard for babies and young children, so ensure all packaging materials are out of their reach.
- Unwind the cord to its full length and inspect it for damage. Do not use the appliance if it is damaged. In case of damage, contact our after sales support line for advice on examination, repair or return of the damaged product.
- Read this manual to familiarise yourself with all the parts and operating principles of the vacuum cleaner. Pay particular attention to the safety instructions on the previous pages.

Assembling the vacuum cleaner

WARNING: Make sure the vacuum cleaner is unplugged from the power outlet before assembling the appliance or changing accessories.

Attaching the hose

- Insert the flexible hose into the hose connection inlet (Fig. 1). Make sure the projected parts on the hose are aligned. Press the hose into the unit until it clicks into lock position.
- To remove the hose, press the two release buttons on each side of the hose connector and pull out the hose.



Adjusting the telescopic tube length

- Push the handle into the upper end of the telescopic tube (Fig. 2).
- To adjust the length of the tube, press down the release button on the tube and while holding it, extend the length as desired. Let go of the release button and pull until it locks securely into place.



Getting Started (Cont.)

Attaching the floor brush

- Fit the dual use floor brush tightly onto the end of the extension tube (Fig. 3).

Your vacuum cleaner is now ready for use.

The accessories

Besides the floor brush you just attached, you may extend the functions of your vacuum cleaner with the other attachments supplied.

WARNING: Always ensure that the vacuum cleaner is disconnected from the power supply before changing accessories.

- The **turbo brush** (Fig. 4) is suitable for thorough cleaning of carpeted areas. It contains a brush that rotates at high speed, which increases the noise level during use.
- The **crevice tool** (Fig. 4) is designed for cleaning in hard to reach places, such as in between furniture.
- The **brush tool** (Fig. 4) is suitable for dusting furniture.
- The crevice tool and brush tool can be stored in the accessory compartment when not in use (Fig. 5).
- To open the compartment, push down the latch labelled "PUSH" on top of the vacuum cleaner body (Fig. 6).
- To attach an accessory tool, make sure the vacuum cleaner is unplugged. Push the tool firmly onto the bottom end of the telescopic tube, or directly onto the handle.



ATTENTION!

Using the vacuum cleaner without a nozzle attached increases the danger of accidentally sucking in objects.

After Sales Support

Telephone: 1300 886 649
Email: info@tempoaustralia.com.au

Instructions

Cord release and rewind

- Holding the power plug firmly, pull it to fully unwind the cord (Fig. 7). A yellow mark on the cord indicates the recommended cord length. Do not pull out the cord past the red mark. Position the cord so no one is likely to trip over it.
- To rewind the power cord, press the cord retraction pedal (Fig. 7).

CAUTION: Take care, the cord retracts very quickly. Guide it with one hand to prevent the cord from whipping, which could cause damage or injury.

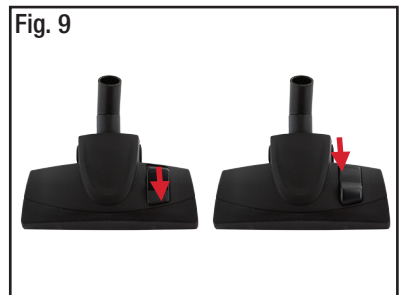


Switching on and off

- Insert the plug into a power point and press down the On/Off pedal to switch the vacuum cleaner on (Fig. 8).
- Press the pedal again to turn the vacuum cleaner off.

Carpet and hard floor cleaning

- For carpet and rug cleaning, press the rocker switch on the dual use floor brush to raise the bristles (Fig. 9).
- When the bristles are raised, press the rocker switch to lower the bristles for vacuuming floor boards, tiles or other hard floor coverings (Fig. 9).
- Pull the vacuum cleaner behind you on its wheels. Hold the extension tube by the handle and gently slide the floor tool over the surfaces to be vacuumed.



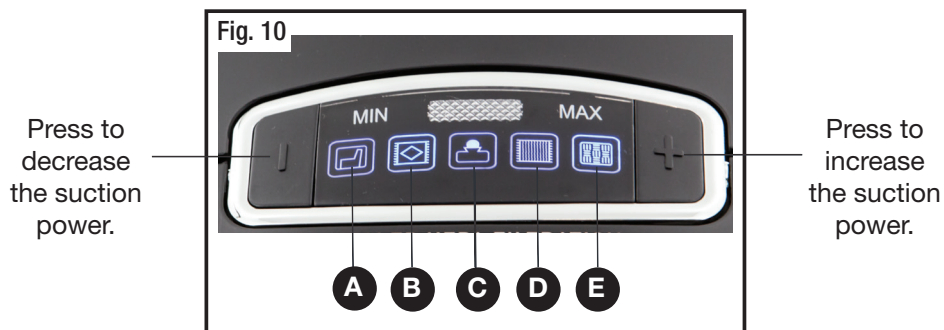
WARNING!

Check the vacuum cleaner and power cord before each use.
Do not use the appliance if any part is damaged.

Instructions (Cont.)

Setting the suction power

You can adjust the suction power to suit the type of floor being cleaned. Use the symbols on the suction power display (Fig. 10) as a guideline.



- (A)** Upholstery, curtains and other soft furnishings — this is the lowest suction power setting.
 - (B)** Cushions, rugs and runners.
 - (C)** Daily vacuuming — this is the energy-saving setting.
 - (D)** Lightly soiled rugs, fitted carpets and hard floors.
 - (E)** Heavily soiled rugs, fitted carpets and hard floors, thorough carpet cleaning — this is the highest suction power setting.
- To select an appropriate power setting, press the [-] or [+] button repeatedly until the desired setting lights up on the suction power display.
 - To reduce the suction power quickly during vacuuming, slide the suction control on top of the handle upwards. This is useful if less power is needed for vacuuming certain items, or to release objects that were accidentally sucked in (Fig. 11).



After Sales Support

Telephone: 1300 886 649
Email: info@tempoaustralia.com.au

Instructions (Cont.)

Transport and storage

- To transport the vacuum cleaner from room to room, you can carry it by the handle if you do not want to pull it behind you (Fig. 12).
- To store it, or when interrupting your work, hook the park/storage hook on the back of the dual use floor brush into the storage bracket at the back of the vacuum cleaner body (Fig. 13 + 14) .
- Put the vacuum cleaner away after every use to prevent anyone tripping over it. Make sure to unplug it from the electrical outlet and rewind the power cord.
- If you want to store the appliance for a prolonged period, remove the dust bag and dispose of it properly (see page 13).
- Always store the appliance indoors in a cool, dry area, out of reach of young children.



ATTENTION!

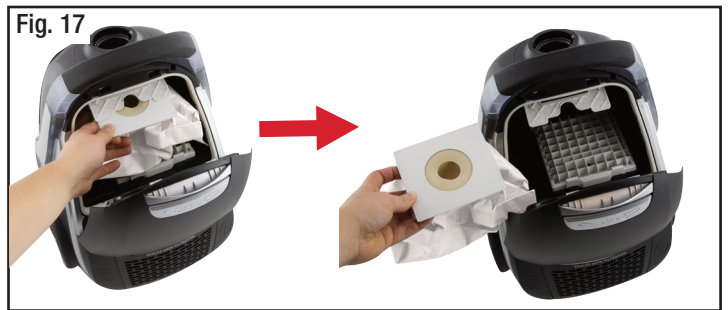
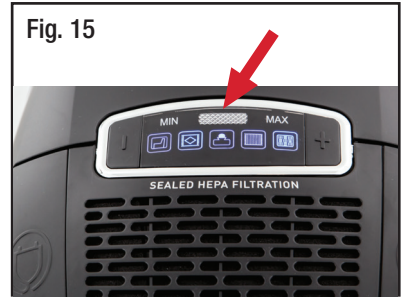
Your vacuum cleaner is equipped with a safety switch to prevent overheating. It automatically cuts off the power supply if the motor overheats. In such a case, switch off the vacuum cleaner and disconnect it from the power supply. Remove the blockage that may have caused the overheating and wait for about 45 minutes until the vacuum cleaner has completely cooled down before reusing it.

Other Useful Information

Changing the dust bag

Change the dust filter bag at the latest when the electronic dust bag full indicator (Fig. 15) shows "red", or when the suction power has noticeably decreased.

- **WARNING:** Make sure the appliance is unplugged from the power supply.
- Open the dust compartment cover by unlatching (Fig. 16) and subsequently raising it until it locks in the highest position and remains open by itself.
- Pull the dust bag up and out of the dust bag holder (Fig. 17).
- Dispose of the full dust bag and replace it with a new one. Insert the bag into the holder and gently fit it into the space.
- Close the dust compartment cover, making sure it clicks into place audibly.



ATTENTION!

- Be careful when removing the dust bag so that no dust escapes.
- You can dispose of the dust bag with your regular household rubbish if it contains no hazardous waste materials.
- Replacement dust bags are available from our after sales support centre. Contact us on the number listed at the bottom of this page.
- The dust compartment cover can only be closed with a dust bag in place.

After Sales Support

Telephone: 1300 886 649
Email: info@tempoaustralia.com.au

Other Useful Information (Cont.)

Filter maintenance

This vacuum cleaner features a three part filtration system for optimum dust removal. The **motor protection filter** is located in the dust compartment, the **HEPA filter** and the **exhaust filter** are located in the HEPA filter compartment.

Cleaning and changing the motor protection filter

The motor protection filter (Fig. 18) prevents larger particles from destroying the motor in case the dust bag is defective. Clean this filter whenever you change the dust bag; replace the filter at least every six months, or whenever you open a new box of dust bags, as they usually contain a new motor protection filter.

- **WARNING:** Make sure the appliance is unplugged from the power supply.
- Open the dust bag compartment and take out the dust bag (see page 13).
- Remove the filter holder with the motor protection filter (Fig. 18). First flip the filter holder forwards and then pull the filter up and out.
- Remove the motor protection filter from the filter holder and shake or beat out the dust over a dustbin, if it is only slightly dirty. Replace it if necessary.
- Clean the filter holder.
- If the new motor protection filter is too large, lay the old filter onto the new filter mat. Mark the contours and cut the new filter down to size with a pair of scissors.
- Insert the new motor protection filter into the filter holder.
- Insert the filter holder with the new (or cleaned) filter into its bracket from above and push it down until it audibly locks into place.
- Replace the dust bag and push the dust compartment cover close until it clicks securely into place.



ATTENTION!

- Only use the vacuum cleaner with all filters intact, in dry condition and correctly installed.
- Replacement filters are available from our after sales support centre. Contact us on the number listed at the bottom of this page.
- Make sure that the openings of the vacuum cleaner are not clogged or obstructed. Otherwise the vacuum cleaner might get damaged.

Other Useful Information (Cont.)

Cleaning and changing the HEPA and exhaust filters

The post-motor filtration system traps microscopic dust particles from the exhaust air stream and ensures that they are not dispersed into the air. It consists of a HEPA filter and an exhaust filter, which are located in the "Sealed HEPA Filtration" compartment. Clean the exhaust filter whenever you change the dust bag, following the instructions below.

- **WARNING:** Make sure the appliance is unplugged from the power supply.
- Open the "Sealed HEPA Filtration" compartment (Fig. 19).
- Remove the HEPA filter (Fig. 20). Grip the latch and gently lift it out of its place.
- Replace the HEPA filter approximately every 6 months, depending on your usage frequency, or when it shows any sign of damage. Contact our after sales support line for a replacement filter.
- Gently pull the foam exhaust filter out from under the filter compartment cover (Fig. 21). The foam filter is hand-washable, but make sure it is completely dry before reinstalling it. Alternatively, or when it shows some damage, replace the filter. Push it down slightly until it sits securely in place.



Cleaning the housing

- **WARNING:** Make sure the appliance is unplugged from the power supply.
- Clean the outside of the housing using a slightly damp cloth only. Do not use cleaning or scouring agents or alcohol, as these might damage the appliance.

ATTENTION!

- Make sure both exhaust filters are properly in place before using the vacuum cleaner.
- The HEPA filter is non-washable; replace when necessary.

After Sales Support

Telephone: 1300 886 649
Email: info@tempoaustralia.com.au

Other Useful Information (Cont.)

Troubleshooting

If you encounter problems with your vacuum cleaner, switch off the appliance and disconnect it from the power supply before starting troubleshooting. Check in the table below for solutions to common problems. If none of the solutions offered help you solve your problem, contact our after sales support line for advice. Do not use a defective appliance. Do not attempt to repair it yourself.

Problem	Possible Cause	Solution
The appliance does not run.	The plug is not connected to the power supply, or power to the outlet is not switched on, or the appliance is not switched on.	Insert the plug into a wall socket, switch on power to the outlet and then switch on the appliance.
	The wall socket does not carry current.	Test the vacuum cleaner on another wall socket that you are sure is working.
	The power cord is damaged.	Call our after sales support line. Do not use the appliance.
The cleaning result is unsatisfactory.	The dust bag is full or clogged.	Change the dust bag.
	The cleaning tool, telescopic tube or suction hose are clogged.	Remove the obstacle. If necessary, use a broomstick or similar object to do this.
	The power setting does not fit the flooring.	Select the power setting suggested for the flooring.
	The carpet/hard floor rocker switch is in the wrong position for the particular type of floor.	Set the carpet/hard floor rocker switch to the correct position for the particular type of floor.
	The attached cleaning tool does not fit the flooring.	Attach the correct cleaning tool.
	The filter is dirty.	Change/clean the respective filter.
The appliance makes unusual noises.	Sucked in objects are obstructing the air stream.	Remove the objects. If necessary, use a broomstick or similar object to do this.

Other Useful Information (Cont.)

Technical specifications

Voltage:	220-240V
Wattage:	1800-2000W (max.)
Dust capacity:	3.5L
Cord length:	8m
Metal telescopic tube length:	84cm
Filters:	Motor protection filter HEPA filter Exhaust filter

Responsible disposal

At the end of its working life, do not throw this appliance out with your household rubbish. Electrical and electronic products contain substances that can have a detrimental effect on the environment and human health if disposed of inappropriately. Observe any local regulations regarding the disposal of electrical consumer goods and dispose of it appropriately for recycling. Contact your local authorities for advice on recycling facilities in your area.

Replacement Dust Bags

- Always empty the bag when indicated on the vacuum cleaner.
- Take care when removing the dust bag so that no dust escapes. Full bags can be disposed with regular household rubbish unless they contain hazardous materials.
- Replacement dust bags are available from our after sales support centre. Contact us on 1300 886 649.
- Before closing the dust compartment cover, make sure a dust bag is properly in place.

Replacement Filters

- Only use the vacuum cleaner with both filters intact, in dry condition and correctly installed. Operating the vacuum without filters in place will damage the unit.
- Replace the filters when necessary. Replacement filters are available from our after sales support centre. Contact us on 1300 886 649.

After Sales Support

Telephone: 1300 886 649
Email: info@tempoaustralia.com.au



STIRLING[®]

Complete Care Bagged Vacuum Cleaner

Repair and Refurbished Goods or Parts Notice

Unfortunately, from time to time, faulty products are manufactured which need to be returned to the supplier for repair.

Please be aware that if your product is capable of retaining user-generated data (such as files stored on a computer hard drive, telephone numbers stored on a mobile telephone, songs stored on a portable media player, games saved on a games console or files stored on a USB memory stick) during the process of repair, some or all of your stored data may be lost. **We recommend you save this data elsewhere prior to sending the product for repair.**

You should also be aware that rather than repairing goods, we may replace them with refurbished goods of the same type or use refurbished parts in the repair process.

Please be assured though, refurbished parts or replacements are only used where they meet ALDI's stringent quality specifications.

If at any time you feel your repair is being handled unsatisfactorily, you may escalate your complaint. Please telephone us on 1300 886 649 or write to us at:

Tempo (Aust) Pty Ltd ABN 70 106 100 252
PO BOX 6056 Frenchs Forest, Sydney, Australia NSW 2086
Telephone: 1300 886 649 (Aust) - Fax: (02) 9975 2688
Tempo Help Desk: 1300 886 649 (Aust)
(Operating Hours: Mon-Fri 08:30am to 06:00pm EST)
Email: info@tempoaustralia.com.au

After Sales Support

Telephone: 1300 886 649
Email: info@tempoaustralia.com.au

