

# TRAMPOLINE MANUAL



**Remarks: SP-Spring**  
**TR-Trampoline**

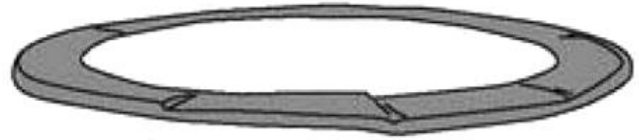
# TRAMPOLINE PARTS LIST

---

ITEM	8FT	10FT	12FT	14FT	16FT
A	1	1	1	1	1
B	1	1	1	1	1
C	6	8	8	8	12
E	48	64	72	96	108
F	6	8	8	8	12
G	3	4	4	4	6
H	12	16	16	16	24
I	1	1	1	1	1

# TRAMPOLINE PARTS LIST

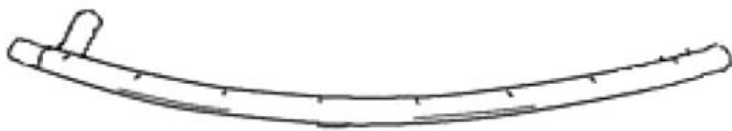
PARTS	ITEM
Frame Cover	A
Jumping Mat	B
Top Rail	C
Springs	E
Leg Extension	F
W-Shaped Leg	G
<b>Screw</b>	H
Tool (Optional)	I



**A** Frame Cover



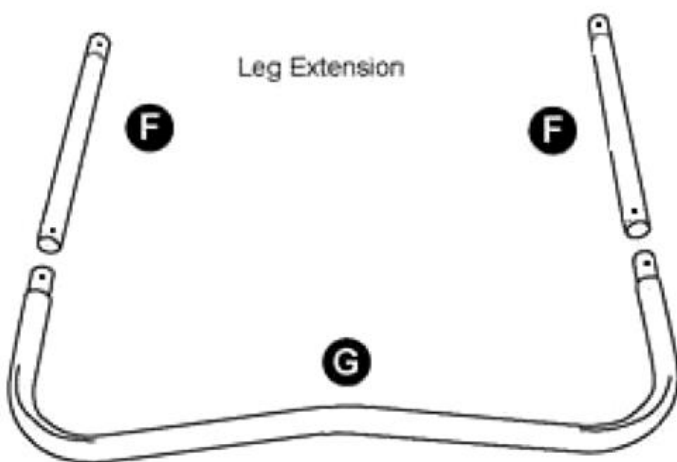
**B** Jumping Mat



**C** Top Rail



**E** Spring



W-Shaped Leg Piece



**H** Screw

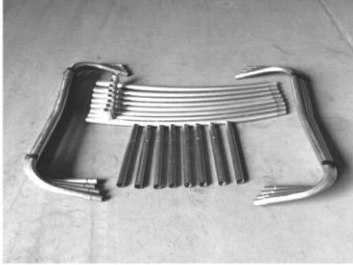


**I** Tools

## TRAMPOLINE FRAME ASSEMBLY

Refer to PARTS LIST for identification of parts.

**WARNING:** 2 adults in good physical condition are required for the following assembly. Wear proper shoes and maintain balance to prevent a fall. Failure to follow all instructions and warnings exactly may result in serious injury.



1. Lay out all trampoline parts in groups (just like picture).



2. Begin by attaching two leg extensions to assemble one "W" shape leg with rail screws.



3. Insert the top rail pieces into each other firmly with the T section facing down.



4. Continue until you form a large circle. Joining the last link may require two or more adults in good physical condition. With a second person holding the opposite end, bring both sides of the circle firmly together and make them secured.



5. Attach the leg assemblies making all secured.



6. Attach the "W" leg to the top frame and secure with rail screws.



7. Now the frame assembly is complete.

## TRAMPOLINE MAT & COVER ASSEMBLY

**DANGER:** 2 adults may be required to complete placement of all springs as illustrated in STEP13. Springs will create high levels of tension when assembled. Please use extreme caution not to pinch your fingers.



- 8.** With stitching portion facing down, lay jumping mat insert frame and attach a spring into one of the triangle rings on the mat. Then attach spring with ring to frame.

**WARNING:** Trampoline is under heavy tension, more effort may be required to attach springs to frame. Be careful not to pinch fingers or slip. Serious injury may occur!



- 9.** Repeat this step directly across from where you attached first spring. Then attach two more springs half distance between the first two, directly across from each other.



- 10.** Use spring tool as shown.



- 11.** Springs under heavy tension may require adjacent springs to be attached every four or five holes, making the springs tension averagely distributed.



- 12.** Attach remaining springs until all springs are placed on frame securely.



- 13.** Lay blue frame cover on outer edge so springs are covered-just like a shower cap.



- 14.** Tie all black straps to top rail of frame. Do not tie to springs.



- 15.** That's it! Your trampoline is complete!

**To disassemble repeat steps 1-15 in reverse.**



# TRAMPOLINE SAFETY NET MANUAL



**Remarks: 1. SP-Spring  
2. TR-Trampoline  
3. ENCL-Safety net**

# ENCLOSURE PARTS LIST

---

ITEM	8FT	10FT	12FT	14FT	16FT
Quick Clamp	12	16	16	16	24
Wrench	1	1	1	1	1
Pole Cap	6	8	8	8	12
Pole Bottom	6	8	8	8	12
Upper Pole	6	8	8	8	12
Lower Pole	6	8	8	8	12
Foam Tube	12	16	16	16	24
Safety net mesh	1	1	1	1	1



# ENCLOSURE PARTS LIST

<u>PARTS</u>	<u>ITEM</u>
Hardware Set:	
Quick Clamp	A
Wrench	A
Pole Cap Set:	
Pole Cap	B
Pole Bottom	B
Upper Pole	C
Lower Pole	D
Foam Tube	E
Safety Enclosure Mesh	F



**A** Quick Clamp



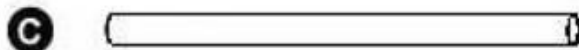
**A** Wrench



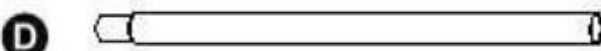
**B** Pole Cap



**B** Pole Bottom



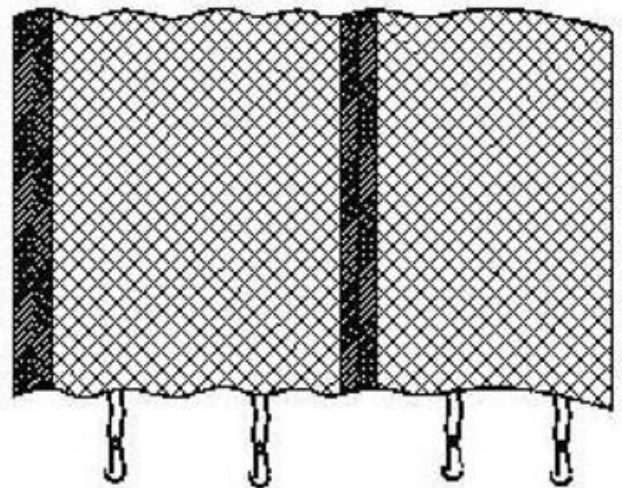
**C** Upper Pole



**D** Lower Pole



**E** Foam Tube



**F** Safety Enclosure Mesh

## SAFETY ENCLOSURE ASSEMBLY

Refer to **PARTS LIST** for identification of parts.

**WARNING:** 2 adults in good physical condition are required for the following assembly. Wear proper shoes and maintain balance to prevent a fall. Failure to follow all instructions and warnings exactly may result in serious injury.



1. Starting from the foam tube, slide foam tube over pole assembly as shown. Repeat with remaining poles.



2. Slide upper pole onto lower pole. Repeat with remaining poles.



3. Place the safety enclosure mesh on trampoline tidily as shown ready for next step.



4. Slide the pole with foam into safety enclosure mesh pole jacket in turn.



5. Repeat with remaining until make all poles jacketed firmly.



6. Carry gathered mesh/poles to chosen entrance site on trampoline. Assign at least one person to hold gathered mesh/poles. Bring entrance pole to one leg and hold in place.

## SAFETY ENCLOSURE ASSEMBLY

Refer to PARTS LIST for identification of parts.

**Important:** Do not use your trampoline and enclosure until you have thoroughly read and understand all instructions and warnings provided.



**7. NOTE:** Firmly clamp the lower pole to the "W" leg vertical part, not to the leg extension, that's very important. Then fasten the quick clamp by wrenching on the bolt.

**8.** Fasten a second clamp to the top of the leg extension. Tighten the clamp holding bolt securely.

**9.** After succeeding in the first pole, repeat with remaining orderly.



**10.** Working clockwise, poles go on alternating legs until you reach the entrance area. Safety enclosure mesh hook when released as shown.

**11.** Attach the hook to the nearest triangle ring of mat. DON NOT attach to the springs!

**12.** Ending at the entrance slide fastener and hooks. Responsible adult supervisor, must re-zip the slide fastener and re-hook all the hooks securely before jumping begins.

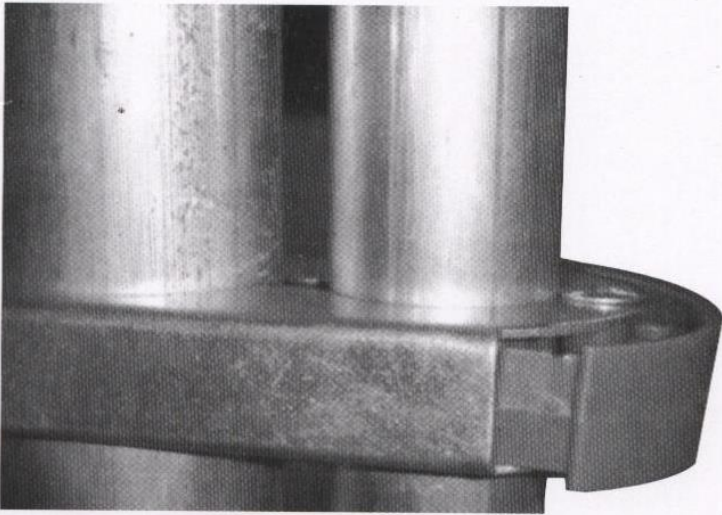


**13.** Congratulations, your trampoline safety enclosure is now complete!

(1)



(2)



(3)



**Note:** Please fix the protective sleeve of clamp step by step from 1-3, in this way whole enclosure is finished setting.

