

CONAIR®



Easy Care 5000 Fabric Steamer

Model CGS28BA

IMPORTANT SAFETY INSTRUCTIONS

When using electrical appliances, especially when children are present, basic safety instructions should always be followed, including the following:

Polythene bags over product or package may be dangerous. To avoid danger of suffocation, keep this wrapper away from babies and children. This bag is not a toy.

DANGER: When the unit is used in a bathroom, unplug it after use since the proximity of water presents a hazard even when the unit is switched off.



WARNING: Do not use this appliance in or near bathtubs, showers, basins, or other vessels containing water.

- Do not immerse in water or other liquids.
- Do not reach for an appliance that has fallen into water. Unplug immediately.
- Take care to avoid contact between the hot surfaces of the unit and the skin, paying particular attention to the face, neck and hands.
- This appliance is not intended for use by persons (including children) with reduced physical, sensory or mental capabilities, or lack of experience and knowledge, unless they have been given supervision or instruction concerning use of the appliance by a person responsible for their safety.
- Children should be supervised to ensure that they do not play with the appliance.

IMPORTANT: Always unplug the appliance when not in use or before cleaning. Do not leave unattended when plugged in or switched on. Do not place on any heat-sensitive surface and always allow to cool before storing away.

- Do not use any attachments other than those supplied by Conair Australia Pty Ltd.
- Use this appliance only for its intended use as described in this instruction booklet.

- This appliance is not intended for commercial use.
- Never drop or insert any object into an opening or hose.
- Do not use if unit has been dropped or damaged.
- Do not use outdoors or operate where aerosol (spray) products are being used or where oxygen is being administered.
- Keep the cord away from heated surfaces.
- Never yank the cord to disconnect from the power outlet, instead grasp plug and pull to disconnect.
- Do not use this appliance if the supply cord is damaged. In the event of damage, discontinue use immediately and contact your dealer for instructions on returning it for examination or exchange.
- After use do not wrap the cord around the appliance as in time this may cause the cord to fracture. Coil cord loosely around the appliance in storage.
- While it is not recommended, if an extension cord is absolutely necessary, a 15 amp rated power cord should be used. Cords rated for less amperage may overheat. Care should be taken to arrange the power cord so that the cord cannot be pulled or tripped over.
- Always ensure that the voltage to be used corresponds to the voltage marked on the unit.
- For additional protection, the installation of a residual device (RCD) with a rated operating current not exceeding 30mA is advisable in the electrical current supplying the bathroom and other parts of the home. Ask your installer for advice.

CAUTION:

- Do not operate steamer without correctly filling the water container.
- Do not overfill the steamer, since it can cause hot water to boil out and burn.
- Never pour water directly into the reservoir. Put water only in water tank.
- Only use clean cold water for filling this appliance. In hard water areas, we recommend the use of distilled water.
- **Always keep the hose and nozzle elevated above the water container.**

- Before unit is turned on, the hose must be extended, and then place it in the hook.
- Do not place the steam nozzle directly onto any surface or on the appliance power cord while it is hot or plugged in.
- Use with caution when changing attachments as they may contain hot water or condensation from the nozzle. Attachments should never be placed on the unit when in use or when preheating. Ensure that the attachments are dry or cooled to avoid contact with hot water.
- Attachments may get hot during use. Allow them to cool before storing.
- When emitting steam, this appliance may cause burns if it is used too close to the skin or eyes, or if it is used incorrectly. To reduce the risk of contact with hot water emitting from the steam vents, test appliance before use by holding it away from the body.
- Do not steam garments while on a person.
- Burns could occur from touching hot metal parts, hot water or steam. Use care when you turn steam appliance upside down – there may be hot water in the reservoir.
- Use with caution when carrying steamer, as it contains hot water.
- Hose will be hot when in use. Avoid prolonged contact to avoid burns.

GETTING TO KNOW YOUR STEAMER

360° rotating hanger spins for convenient steaming access

30% more steam* with a unique nano-silver ceramic coated nozzle

Up to 100min of continuous steam

Cool touch handle with easy-grip control

Adjustable telescopic pole collapses for easy storage

Storage hook holds nozzle when changing garments. Ideal for storing the attachment when not in use

Duo pant clip system, specially designed to easily steam trousers & long garments

Duo power control with 2 settings:

- Advanced Pro-steam setting with 1500 watts of power, ideal for heavier garments, bedding, linen, home furnishings & upholstery
- Normal 1200 watts setting, ideal for cotton, polyester, nylon, silk & delicate non-iron fabrics

Removable 2.5 litre water container with steam time indicators

Automatic safety cut-off system

Valve on base of steamer for draining limescale

Wheel on base of steamer for easy gliding



Press attachment for creating professional creased results



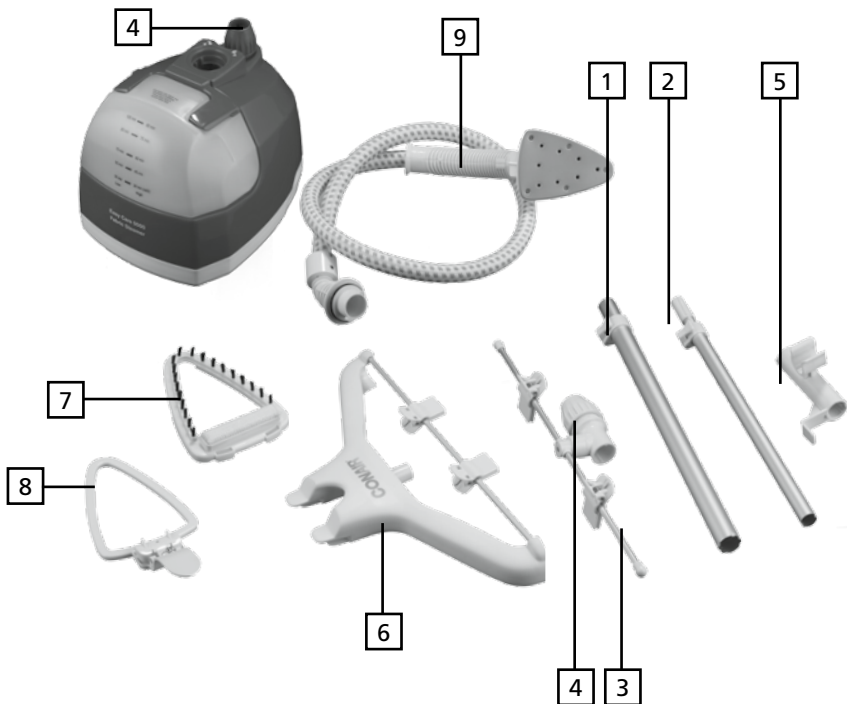
2-in-1 lint & bristle brush attachment for removing fluff and hair from home furnishing and bedding

*compared to a traditional T nozzle.

STEAMER ASSEMBLY

The garment steamer comes in several parts:

1. Telescopic pole
2. Extendable telescopic pole
3. One metal rod with pant clip system
4. Two grooved plastic connectors (one is attached to the base of the steamer and the other is attached to the metal rod with pant clip system)
5. One round plastic connector with hook
6. One 360° rotatable hanger with pant clip system
7. 2-in-1 lint and bristle brush attachment
8. Press attachment
9. One woven hose + cool touch handle + triangular shaped nozzle



Assembling the Telescopic Pole, Pant Clip System and 360° Rotatable Hanger

Step.1 Loosen the existing grooved plastic connector from the base of the steamer



(Fig.A)

Step.2 Insert telescopic pole, marked '1' (with open hole facing down) into the connector and receptacle in base of the steamer (Fig.B). Slide the pole into the base of the steamer and twist into place, and then push the pole down as far as it can go, until it clicks into place. Screw tightly the grooved connector into place.



(Fig.B)

Step.3 Unscrew the grooved connector attached to the metal rod with pant clip system. Slide the pant clip system to the desired position.

Step.4 Tightly screw the grooved connector.(Fig.C)

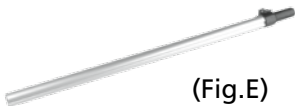


Step.5 Insert the round plastic connector with hook onto the top of the pole on the garment steamer. (Fig.D)

Push the round plastic connector down the pole until it cannot be pushed down any further.



Step.6 Take the extendable telescopic pole, marked '2' and unclip the white plastic clip (Fig.E). Extend the pole as far as required and secure desired height by closing the white plastic clip. (Fig.F)



(Fig.E)



(Fig.F)

Step.7 Place the extendable telescopic pole (with open hole facing down) into the top of the round plastic connector already on the garment steamer. Align the pole and then lightly push down into place. (Fig.G)



(Fig.G)

Step.8 Place the rotatable hanger with pant clip system over the top of the pole.

NB – The pant clips on the hanger should be at the front of the garment steamer.

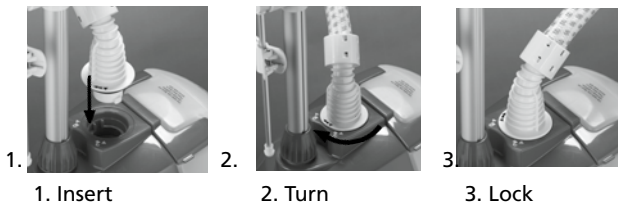
Hold the pole and then push the hanger down into place. (Fig.H)



(Fig.H)

The telescopic pole, hanger and duo pant clip system should now be in place. You are now ready to attach the hose and nozzle to the steamer. **Attaching the Steamer Hose**

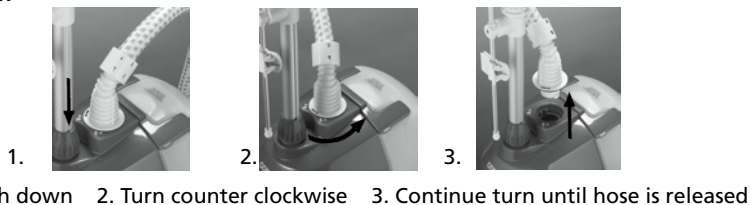
To attach the steamer hose, insert the bottom of the steamer hose into the base of the garment steamer. Twist clockwise to secure in place.



Removing the Steamer Hose

Ensure that the garment steamer has cooled down.

To remove the steamer hose, turn slowly counter clockwise to release.



USING THE 360° ROTATABLE HANGER



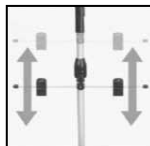
This garment steamer includes a 360° rotatable hanger. To use the hanger, simply hang your garment over the hanger and turn as you wish. Each time you move the hanger around, it will automatically click and secure itself in place, for fast and easy use.

USING THE PANT CLIP SYSTEM

This garment steamer includes a duo pant clip system for holding pants taut for faster and more effective steaming. (Fig.L) The bottom clips can be adjusted by loosening the knob on the metal rod and the height can also be adjusted by simply sliding the metal rod up or down the telescopic pole, depending on the length of the pants. To move the metal rod up or down, simply unscrew and release the grooved connector, then move the metal rod as required. (Fig.M) NB – Some pants may be too long to use the bottom of the pant clips. Simply use the top clips on the hanger and let the bottom of the pants hang freely.



(Fig.I)



(Fig.J)

CONNECTING THE ATTACHMENTS

Attachments should only be connected and removed from the nozzle when the unit is cool.

This garment steamer includes two plastic attachments:



2-in-1 lint and bristle brush attachment for removing lint from fabrics.



Press attachment to steam creases from pants, shirt sleeves and collars. It can also be used to press curtains and other fabrics.

To attach the 2-in-1 lint and bristle brush to the nozzle, simply align the bottom of the attachment with the bottom of the nozzle. Push the top of the attachment forward until it clicks into place. The 2-in-1 lint and bristle brush should then be attached to the nozzle and is now ready to use.

To remove, simply unclick the top of the attachment and pull away from the nozzle.

To attach the press attachment to the nozzle, turn the attachment upside down so that the clip on the attachment is closest to the handle of the nozzle. Align the bottom of the attachment with the bottom of the nozzle. Push the attachment up until it clicks into place. The press attachment should then be attached to the nozzle and is now ready to use.

To remove, hold the clip on the bottom of the attachment and pull away from the nozzle.

USING THE STORAGE HOOK

The storage hook included with this steamer has two uses:

1. Use it to hold the steamer nozzle when changing garments on the hanger. Simply hook the back of the nozzle onto the side of the storage hook. Be careful when placing the steam nozzle on this hook as steam will still be emitting from the steamer, when the steamer is switched on. Always attach and remove the steamer nozzle by handling the cool-touch handle.
2. Use it as a storage hook to hold the two attachments when not in use.



WHAT IS THE NANO-SILVER CERAMIC COATING ON THE NOZZLE AND HOW DOES IT WORK?

The nozzle on this steamer has a lightweight stainless steel surface that is coated with ceramic and nano-silver. The nano-silver ceramic coating works in two ways:

1. Ceramic coating provides even heat and steam distribution over the entire surface of the nozzle, helping to easily remove wrinkles and reduce hotspots on fabric.
2. Micro particles of nano silver refresh and rejuvenate fabric and remove unpleasant odours.

DUST MITES

Dust mites flourish in warm, humid environments and need humidity of more than 50% year round to survive, making most coastal areas of Australia and New Zealand the perfect breeding ground.

Millions of dust mites exist in homes attached to fibres in carpet, bedding, pillows, sofas, rugs, throws, cushions, curtains, drapes and children's soft toys.

The mattress is the major breeding ground for dust mites. Depending on its age, a mattress may contain between 100,000 and 10 million dust mites and their eggs.

Using a steamer that emits steam hotter than 55°C is the best and most convenient way to eliminate dust mites from around the home. This steamer emits steam to 100°C.

OPERATING INSTRUCTIONS

BEFORE FILLING THE WATER CONTAINER

Turn the water container upside down and inspect to make sure the valve and spring assembly are functioning. Place the container in the reservoir and check that it is seated securely. If the container has been stored with water inside, it may be necessary to remove the water and clean the container. Refer to the instructions on 'CLEANING, STORING AND MAINTENANCE' for steps on how to clean and care for the water container.

FILLING THE WATER CONTAINER

1. Before plugging in the appliance, remove the water container

- with the handle and turn upside down.
2. Unscrew the valve and spring assembly cap in the centre of the container.
 3. Fill water container by holding the container under a source of cold water. **Only use clean water for filling the steamer. In hard water areas, we recommend the use of distilled water. There is no need to fill with warm or hot water, as the steamer heats the water while producing steam.**
NB - NEVER USE ADDITIVES SUCH AS SALT, PERFUME OR DYE WITH THIS STEAMER. THESE SUBSTANCES WILL CORRODE OR CLOG THE INTERNAL PARTS OF THE STEAMER.
 4. Fill the container to the desired level. Use the measurements on the side of the water container as a guide. Each measurement indicates the time length of steam the garment steamer will provide if it is filled to that level. Do not overfill the container.
NB – the total capacity of the water container is 2.5 litres.
 5. Screw the valve and spring assembly cap back onto the water container and return the container to the upright position.
 6. Place the water container into reservoir in the base of the steamer and ensure that it is seated properly in the cavity.

OPERATING THE STEAMER

1. Ensure that the steamer is assembled correctly and that the hose is connected securely to the base of the steamer.
2. Ensure that the on/off 'LO/O/HI' switch is set to the 'O' position.
3. Plug the steamer into a suitable power outlet.
4. This steamer features a duo power control with two settings:
 - I. Normal (LO) setting – 1200 watts of power. Ideal for steaming cotton, polyester, nylon, silk and delicate non-iron fabrics.
NB – THIS IS THE STANDARD SETTING.

This setting provides 100 minutes of continuous steam.

II. Pro-steam setting (HI) – 1500 watts of power.

Ideal for steaming denim, wool, cashmere and heavier garments, bedding and linen, home furnishings and upholstery. This advanced setting combined with a cloth cover is also ideal for steam cleaning hard surfaces such as windows, benchtops and flooring.

NB – THIS SETTING IS A VERY POWERFUL, ADVANCED SETTING. TAKE EXTRA CARE WHEN USING THIS STEAM SETTING.

This setting provides 80 minutes of continuous steam.

Switch the on/off switch on the base of the steamer to the required setting. When using the:

I. Normal setting, the LED will illuminate in a light red colour

II. Pro-steam setting, the LED will illuminate in a bright red colour.

NB - Always check the LED light and on/off switch to ensure you are aware of which steam setting you are using.

5. After flicking the on/off switch, steam will begin to emit from the nozzle after about 60 seconds.

6. The automatic safety cut-off system on this steamer switches the heater off when the water tank is empty, for safe and easy use.

CAUTION: Hose will be hot when in use. Avoid prolonged contact.

HOW TO STEAM

This steamer is suitable for use on all types of fabric including cotton, polyester, nylon, elastane, denim, velvet, leather, wool, cashmere, silk and delicate non-iron fabrics, as well as fabrics with beading and embellishments.

This steamer is also great for all dry-clean only items – helping you to save time and money on expensive dry cleaner bills.

It is also great for use on all home fabrics and soft furnishings such as curtains, rugs, cushions, sofas, bedding, mattresses, pillows and linen to help remove odours, kill dust mites and rejuvenate fabric.

The unique nozzle on this steamer provides 30% more steam surface area when compared to a traditional T nozzle; and the design and triangle shape of the nozzle makes it easy to steam collars, sleeves, between and over buttons and between smaller areas of garments, ensuring perfect steam results everytime.

Depending on the type of garment/fabric to be steamed, there are several ways of steaming:

1. Grasp the nozzle with the steam jets facing away from you.
2. Begin at the bottom of the garment to allow the steam to rise and remove wrinkles from the inside and outside of the fabric.
NB – Some garments are best steamed on the underside of the material.
3. Slowly move the nozzle from the bottom to the top of the garment.
4. Remove the nozzle from the garment and smooth the fabric with your free hand. This will allow the fibres of the fabric to relax and help eliminate wrinkles and creases.

NB – During operation, the steamer hose may gurgle. This is a normal result of condensation collecting inside the hose. Simply lift the handle upward until the hose is extended to full height. The gurgling will stop when the excess moisture inside the head has had a chance to drain back into the hose.

NOTE: Test fabric for colour fastness in a small inconspicuous spot. Drape linens, towels, handkerchiefs and napkins over a rod or place on a towel rack when steaming. Heavier garments and fabrics may require repeated steaming. Repeat steaming as necessary. It takes some practice to gain speed and efficiency and to learn that some fabrics require multiple steam applications.

****Do not directly touch velvet, silk or delicate fabrics with the nozzle. Lightly touch when steaming, to allow the steam to rise over the garment.**

Always steam with the hose in an upright position, so any condensation is free to flow back into the steamer.

NB - During operation the steamer hose may gurgle. This is a normal result of condensation collecting inside the hose. Simply lift the steamer nozzle and handle into an upright position until the hose is extended to full height, allowing the condensation to flow

back into the base of the steamer. The gurgling will stop when the excess moisture inside the nozzle and hose has had a chance to flow back into the base of the steamer.

If you steam with the hose upside down, condensation will collect inside the hose. This will cause gurgling and some water droplets to form near the steam jets on the handle. To avoid this, frequently lift the steam handle upward until the hose is extended to full height.

TO STEAM DRAPES AND CURTAINS

Wash and dry as directed in the instructions of your drapes and curtains. Re-hang drapes/curtains and then steam when in place.

CLEANING, STORING AND MAINTENANCE

1. Turn the product off by flicking the on/off LO/O/HI switch to the 'O' off position. Unplug from the power outlet.
2. Wait for the steamer to cool completely for at least 30 minutes.
3. Coil power cord loosely around the appliance.
4. Remove the steamer hose as per instructions in 'Step 2 – Attaching the Steamer Hose'.
5. Remove the water container from the base of the steamer. Unscrew valve and spring assembly and empty unused water. Allow to air dry.
6. Remove excess water from the reservoir in the base of the steamer by lifting the unit and pouring into a sink.
7. Replace water container.
8. Store the unit in an upright position.
9. To compact the steamer for more convenient storage, simply:
 - a) remove the hanger
 - b) unclip the extendable telescopic pole and secure to its' shortest height by re-clipping the white clip
 - c) rotate the bottom rod with pant clips so that it is vertical and in-line with the pole
 - d) secure the hose in a circle and place the back of the nozzle



over the storage hook

e) place the middle round section of the hanger into the clip on the front of the storage hook.

Decalcification of Your Steamer

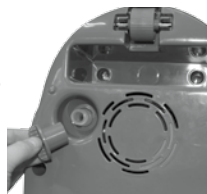
If the appliance begins to produce steam more slowly than usual, stops producing steam and then starts again, you may need to decalcify your steamer.

Decalcification refers to removing the calcium deposits which can form over time on the metal parts of the steamer.

For best performance, decalcify the unit from time to time such as once a month, depending on how often you use the appliance. The frequency also depends on the hardness of the water used.

To decalcify, fill the water tank with a solution of 1/3 white vinegar and 2/3 water and replace the water container into its cavity in the base of the steamer. Place the nozzle head over a sink and switch the steamer on, to the 'HI' position. Run the steamer until at least half of the liquid has been steamed (approx 1 litre). Turn the steamer off, to the 'O' position, unplug from the power outlet and allow to cool for 30 minutes.

To fully decalcify, remove the water container from the steamer and drain the remaining liquid from the tank and cavity of the steamer. Then, unscrew the drain hole cap on the base of the steamer and place the base of the steamer into a sink or area where the water can be drained from the steamer. Leave for 10 minutes and allow the remaining solution to be drained from the water container and cavity of the steamer. As the water drains from the steamer, it will also drain the limescale from the steamer. Repeat the above procedure as many times as necessary until a normal steam rate returns, usually 2-3 times. With each repeated cycle, use a fresh solution of vinegar and water. Run one cycle of fresh, cold water after the completion of decalcification before using the steamer again.



TROUBLE SHOOTING

PROBLEM	POSSIBLE	CAUSE SOLUTION
Steamer fails to heat	Steamer is not plugged in	Plug into power outlet and switch product on
No steam	Water level is low	Switch product off and refill water container
Water drips from nozzle	Condensation in hose	Hold the nozzle and hose vertically and allow water to drain back into unit
Nozzle gurgles	Condensation in hose	Hold the nozzle and hose vertically and allow water to drain back into the unit
Poor steaming performance	1. Steamer is not plugged in 2. Decalcification is necessary	1. Plug into power outlet 2. Follow steps for decalcification

Note: Minerals in water will vary in different areas. To ensure continued operation of the steamer, never store without cleaning and removing excess water from the water container and the water reservoir.

LIMITED ONE YEAR WARRANTY

This product is subject to the express warranty given on the warranty card included with the product, as may be amended by reference to and in accordance with the terms of the warranty cards displayed on Conair website www.conairaustralia.com.au

To make a warranty claim you must retain your proof of purchase. Further details can be found at www.conairaustralia.com.au and click on 'customer service'.

CONAIR®

©2012

Conair Australia Pty Ltd,
Suites 20 & 21, Ground Floor, 7 Narabang Way,
Belrose NSW 2085. Australia
Customer Service Hotline Australia: 1800 650 263
New Zealand: 0800 266 247
E-mail us at: aus_info@conair.com
www.conairaustralia.com.au