

Vacuum Cleaner

user manual

- * Before operating this unit, please read the instructions carefully.
- * For indoor use only.

English

imagine the possibilities

Thank you for purchasing a Samsung product.
To receive a more complete service,
please register your product at
www.samsung.com/register

SAMSUNG

safety information

SAFETY INFORMATION



- Before operating the appliance, please read this manual thoroughly and retain it for your reference.



- Because these following operating instructions cover various models, the characteristics of your vacuum cleaner may differ slightly from those described in this manual.

CAUTION/WARNING SYMBOLS USED

	Indicates that a danger of death or serious injury exists.
	Indicates that a risk of personal injury or material damage exists.

OTHER SYMBOLS USED

	Represents something you must NOT do.
	Represents something you must follow.
	Indicates that you must disconnect the power plug from the socket.

safety information

IMPORTANT SAFEGUARDS

1. Read all instructions carefully. Before switching on, make sure that the voltage of your electricity supply is the same as that indicated on the rating plate on the bottom of the cleaner.
2. **WARNING** : Do not use the vacuum cleaner when rug or floor is wet.
Do not use to suck up water.
3. Close supervision is necessary when any appliance is used by or near children. Do not allow the vacuum cleaner to be used as a toy. Do not allow the vacuum cleaner to run unattended at any time. Use the vacuum cleaner only for its intended use as described in these instructions.
4. Do not use the vacuum cleaner without a dust bin. Empty the dust bin before it is full in order to maintain the best efficiency.
5. Slide to the Stop(or Min)position before inserting a plug into the electrical outlet.
6. Do not use the vacuum cleaner to pick up matches, live ashes or cigarette butts. Keep the vacuum cleaner away from stoves and other heat sources. Heat can deform and discolour the plastic parts of the unit.
7. Avoid picking up hard, sharp objects with the vacuum cleaner as they may damage the cleaner parts. Do not stand on the hose assembly. Do not put weight on the hose. Do not block the suction or the exhaust port.
8. Switch the vacuum cleaner off on the body of the machine before unplugging from the electrical outlet. Disconnect the plug from the electrical outlet before changing the dust bag or dust container. To avoid damage, please remove the plug by grasping the plug itself, not by pulling on the cord.
9. This appliance is not intended for use by persons (including children) with reduced physical, sensory or mental capabilities, or lack of experience and knowledge, unless they have been given supervision or instruction concerning use of the appliance by a person responsible for their safety.

Children should be supervised to ensure that they do not play with the appliance.
10. The plug must be removed from the socket outlet before cleaning or maintaining the appliance.
11. The use of an extension cord is not recommended.
12. If your vacuum cleaner is not operating correctly, switch off the power supply and consult an authorized service agent.
13. If the supply cord is damaged, it must be replaced by the manufacturer or its service agent or a similarly qualified person in order to avoid a hazard.
14. Don't carry the vacuum cleaner by holding the hose. Use the handle on the vacuum cleaner set.

contents

ASSEMBLING THE CLEANER 05 Assembling the Cleaner

05

OPERATING THE CLEANER 06 Power cord
07 Power control

06

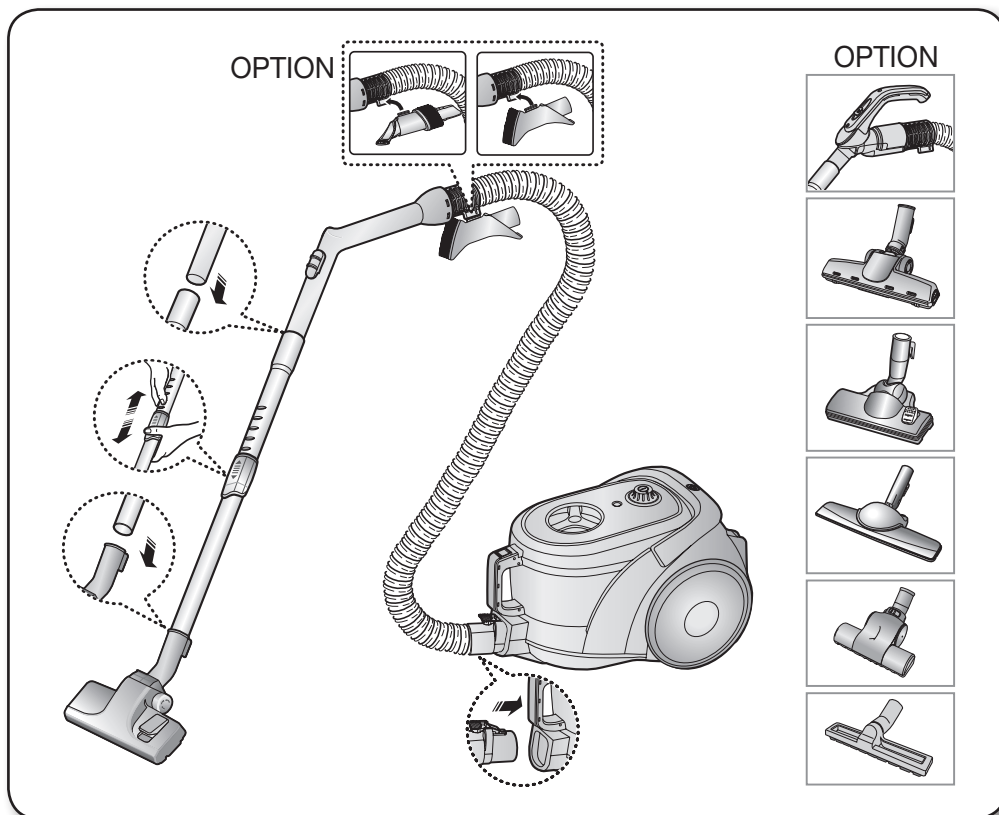
MAINTAIN TOOLS AND FILTER 08 Using accessory
09 Maintain floor tools
11 Emptying the dust bin
12 Cleaning the dust pack
14 Cleaning the motor protection filter
14 Cleaning the outlet filter

08

TROUBLESHOOTING

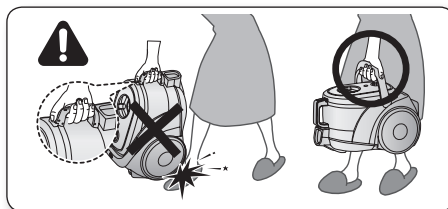
16

assembling the cleaner

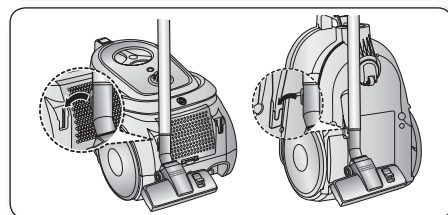


► Features may vary according to model.

- ★ • Please do not press the button of dust bin handle when carrying machine.

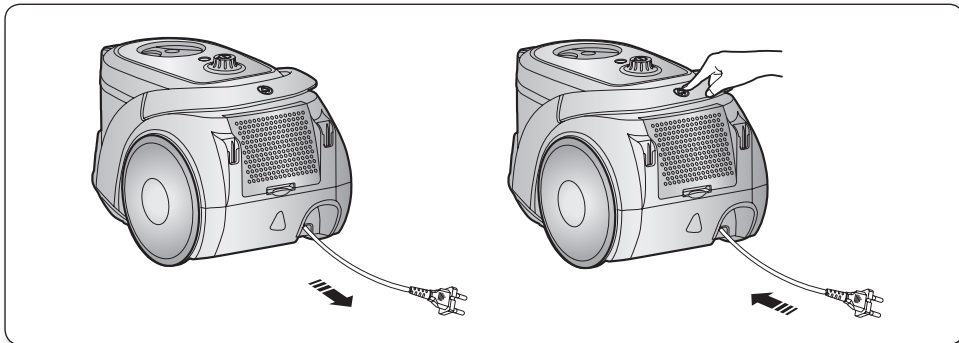


- ★ • For storage, park the floor nozzle.

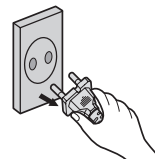


operating the cleaner

POWER CORD



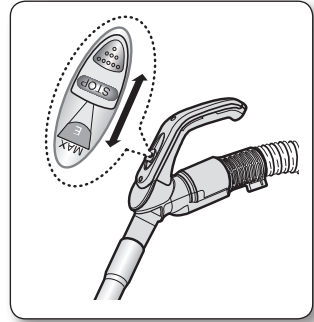
- When removing the plug from the electrical outlet, grasp the plug, not the cord.



POWER CONTROL

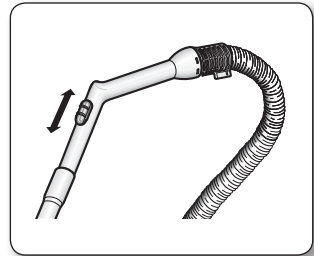
SILDE CONTROL TYPE ONLY (Optional)

- SLIDE TO THE STOP POSITION
Vacuum-cleaner switches off (stand by mode)
- SLIDE FORWARD TO MAX
Suction capacity increases smoothly up to maximum.



BODY-CONTROL TYPE / ON/OFF TYPE

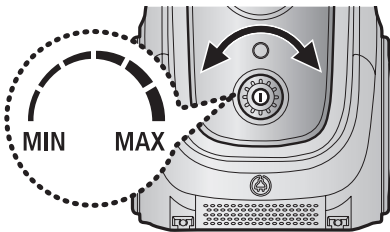
To reduce suction for cleaning draperies, small rugs, and other light fabrics, pull the tap air until the hole is open.



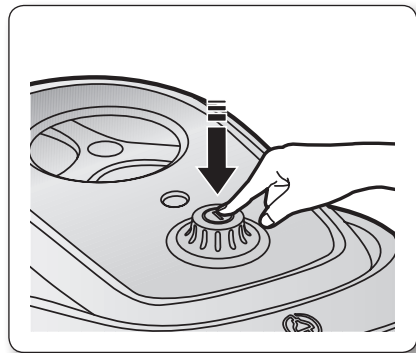
BODY-CONTROL TYPE (Only)

MIN = For delicate surface e.g. net curtains.

MAX = For hard floors and heavily soiled carpets.



ON/OFF TYPE (Only)

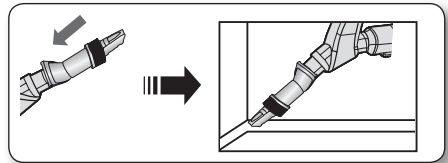
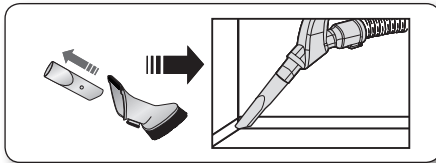


maintain tools and filter

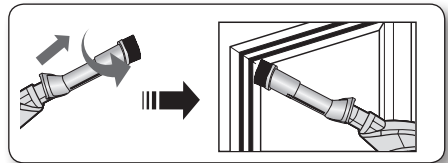
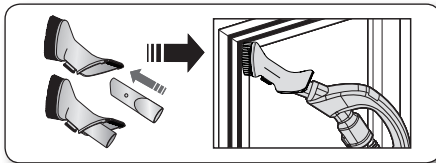
USING ACCESSORY

Accessory (option)

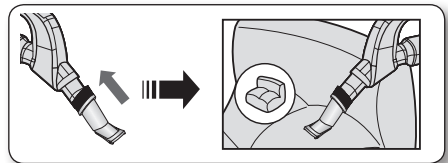
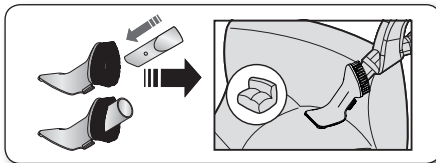
- Push the accessory on to the end of the hose handle.



- Pull out and turn the dusting brush for cleaning delicate areas.

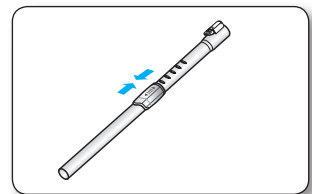


- To use the upholstery tool, push the accessory on to the end of the hose handle in the opposite direction.

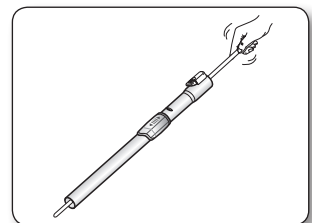


Pipe

- Adjust the length of the telescopic pipe by sliding the length control button located in the center of the telescopic pipe back and forth.

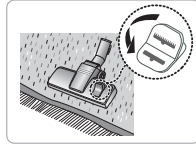
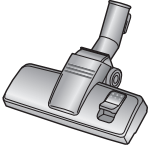


- To check for blockages, separate the telescopic pipe and adjust to shorten. This allows for easier removal of waste clogging the tube.

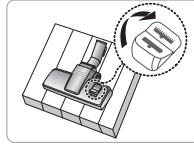


MAINTAIN FLOOR TOOLS (Option)

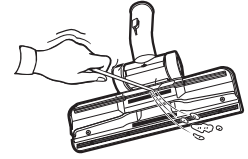
< OPTION >



Carpet Cleaning



Floor Cleaning

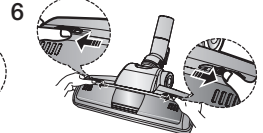
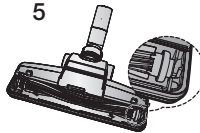
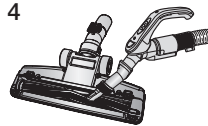
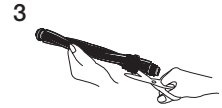
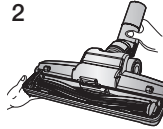
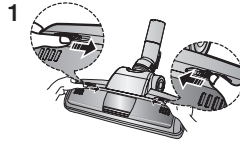


- Adjust the inlet lever according to the floor surface.
- Remove waste matter completely if the inlet is blocked.

< OPTION >



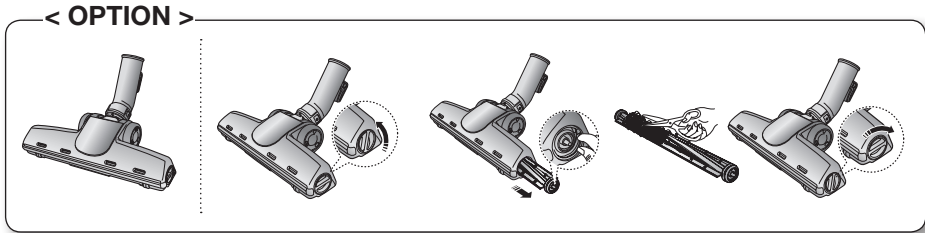
For improved pickup of pet hair and fibre on carpets



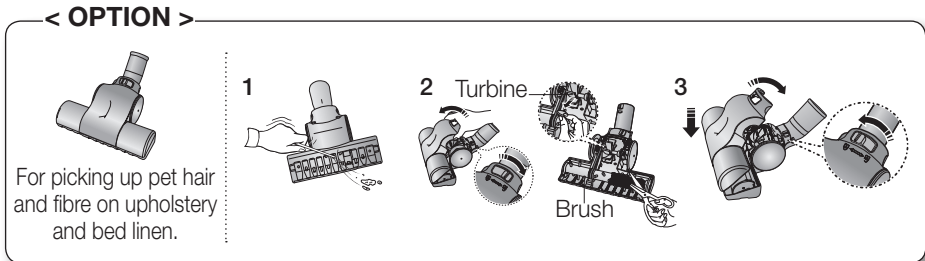
Frequent vacuuming of hair or pet fur may cause a falling-off of the rotation due to matters tangled around the drum. In this case, clean the drum with care.

1. Push the Open button of the transparent screen cover to separate the cover.
2. Remove the brushbar from the transparent screen.
3. Remove waste matter such as dust and hair tangled around the brushbar using scissors.
4. Remove dust inside the brush housing using a dry duster or crevice tool.
5. Insert brushbar into rotating belt and assemble.
6. Click the transparent screen cover back into place to reassemble.

maintain tools and filter



- Detach transparent drum cover for easy cleaning.



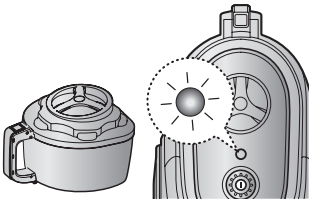
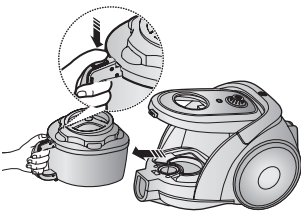
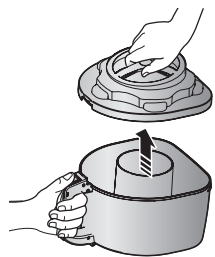
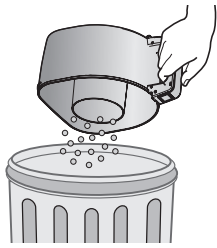
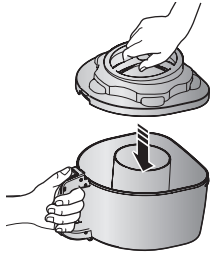
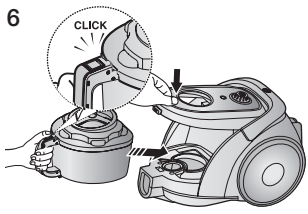
Clogs on turbine keeps brush from turning, and in this case, take care of it.

1. Remove waste matter completely when inlet is blocked.
2. Turn the lock button to 'UNLOCK', and remove
3. To reassemble, align the cover to the front of the main body and close. After closing the cover, ensure that the lock button is turned to the 'LOCK' position.


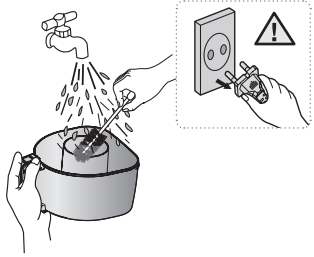


WARNING Use for bedclothes only. Be cautious not to damage brush during unclogging.

EMPTYING THE DUST BIN

<p>1</p>  <p>Once dust reaches the dust full mark, or once the dust full light is on, empty the dust bin.</p>	<p>2</p>  <p>Take the dust bin out by pressing the button.</p>	<p>3</p>  <p>Separate the dust bin cover.</p>
<p>4</p>  <p>Throw away dust in the bin.</p>	<p>5</p>  <p>Close the dust bin cover.</p>	<p>6</p>  <p>Before use, push the dust bin into the main body of the vacuum cleaner and push cover until you hear the "click" sound.</p>

- Empty into a plastic bag (recommended for asthma/allergy sufferers)

You may rinse the dust bin with cold water.

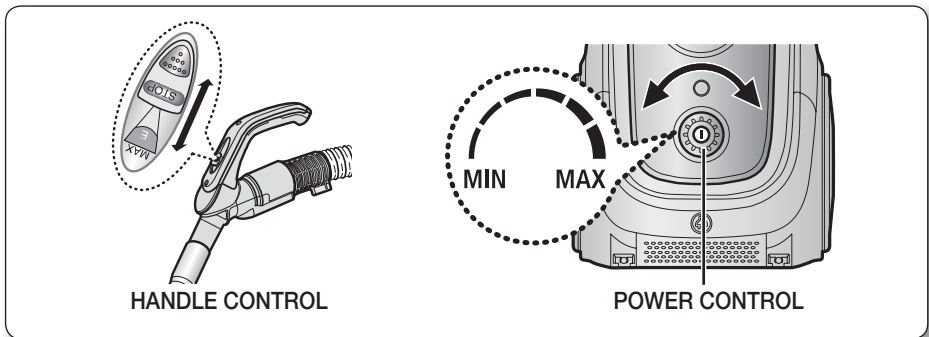
maintain tools and filter

CLEANING THE DUST PACK

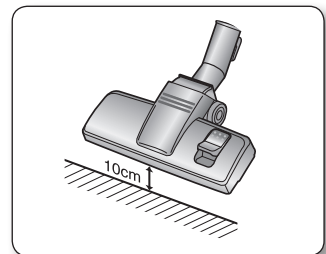
WHEN TO CLEAN THE DUST PACK

- If suction is noticeably reduced during cleaning, please check the dust pack as indicated below.

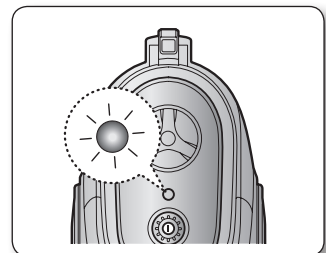
Turn the vacuum power to '**MAX**'.



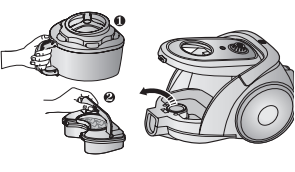
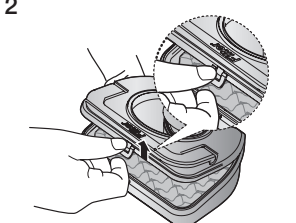
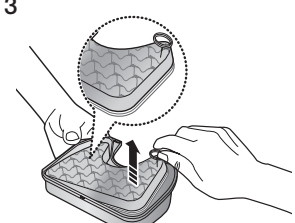
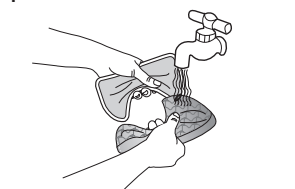
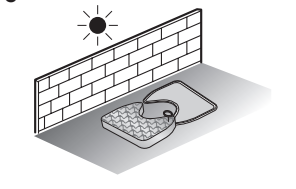
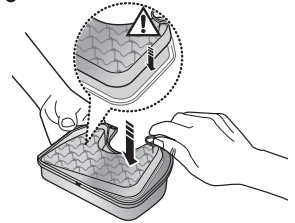
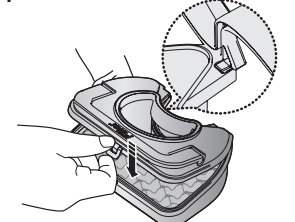
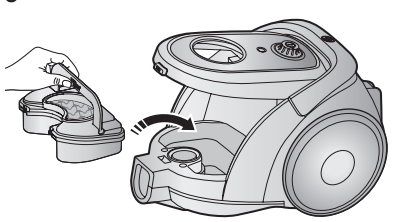

- If the filter check indicator turns red with the inlet floating 10 cm above flat floor, clean it.



- When the indicator light comes on, please empty the Dust Pack as shown in the following illustrations.



CLEANING THE DUST PACK

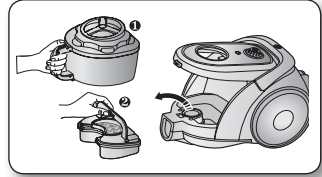
<p>1</p>  <p>Remove the dust bin and dust pack as shown.</p>	<p>2</p>  <p>Remove the fixed frame of the dust pack cover.</p>	<p>3</p>  <p>Remove the sponge and filter from the dust pack.</p>
<p>4</p>  <p>Wash the sponge and the filter of the dust pack with water.</p>	<p>5</p>  <p>Let the sponge and filter dry in the shade for more than 12 hours.</p>	<p>6</p>  <p>Put the sponge and filter into the dust pack.</p>
<p>7</p>  <p>Before reassembly, align the dust pack cover and dust pack correctly.</p>	<p>8</p>  <p>Put the assembled dust pack into the main body.</p> 	

- Make sure the filter is completely dry before putting it back into the vacuum cleaner. Allow 12 hours for it to dry.

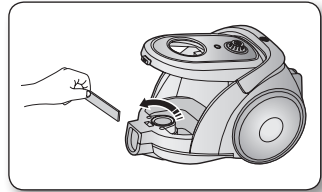
maintain tools and filter

CLEANING THE MOTOR PROTECTION FILTER

- Take out both the dust bin and the dust pack.

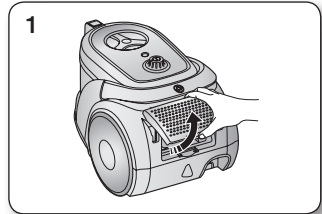


- Remove the motor protection filter from the vacuum cleaner. Shake and tap the dust from it and put back in machine.

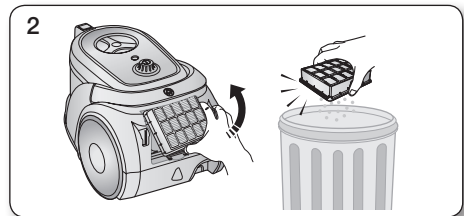


CLEANING THE OUTLET FILTER

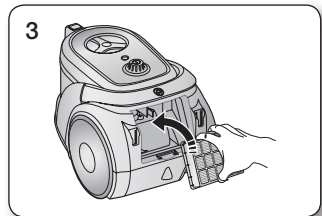
1. Press the fixed frame part at the back of the main body to remove.



2. Pull out the HEPA Filter using the tab. Clean the HEPA filter.




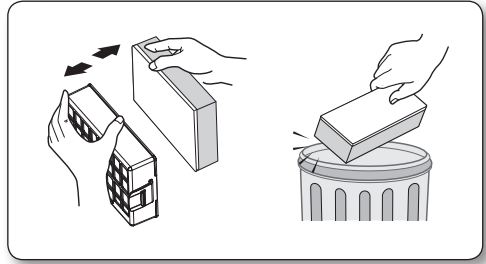
3. Put the HEPA filter into the main body until you hear a 'click' sound.



MICRO CARBON FILTER (OPTION)

Remove and replace the blocked outlet filter.

 Replacement filters are available at your local Samsung distributor.



troubleshooting

- IF YOU HAVE A PROBLEM

PROBLEM	REMEDY
Motor does not start.	Check cable, plug and socket. Leave to cool.
Suction force is gradually decreasing.	Check for blockage and remove.
Cord does not rewind fully.	Pull the cord out 2-3m and push down the cord rewind button.
Vacuum cleaner does not pick up dirt.	Check hose and replace if required.
Low or decreasing suction.	Please check filter and, if required, clean as illustrated in the instructions. If filters are out of condition change them to new ones.
Body overheating.	Please check filters, If required clean as illustrated in the instruction.
Static electricity discharge.	Please decrease power suction.

If you have any questions or comments relating to Samsung products, please contact the SAMSUNG customer care center.

Country	Customer Care Center ☎	Web Site
AUSTRALIA	1300 362 603	www.samsung.com/au
HONG KONG	3698-4698	www.samsung.com/hk
MALAYSIA	1800-88-9999	www.samsung.com/my
SINGAPORE	1800-SAMSUNG (7267864)	www.samsung.com/sg