

Thinking of you

Electrolux

air conditioning range 2007/08
inverter split system
portable



TURBO






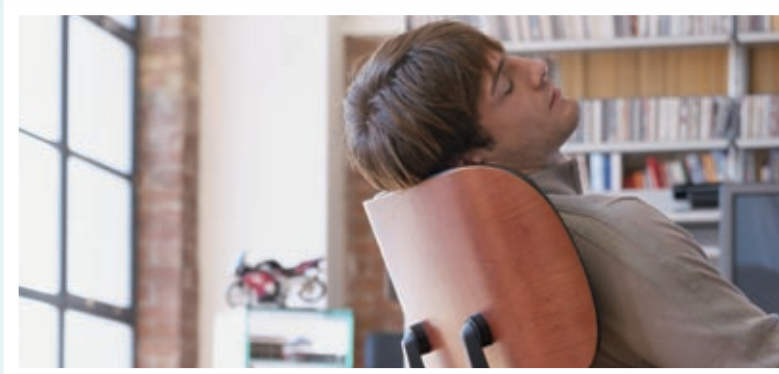
table of contents

page

- 3. plasmacluster®
- 4. air conditioning features
- 6. split system – reverse cycle with inverter
- 8. portable
- 10. sizing guide
- 11. top service
- 11. piping length and elevation
- 11. installation requirements

plasmacluster® the science of breathing easier

Plasmacluster® is an exciting technology that cleanses the air of contaminants and impurities, reducing the incidence of allergies, asthma and even the common cold.



what exactly is plasmacluster® and how does it work?

Plasmacluster® is an industry leading air purification technology that introduces positive and negative ion clusters into your room to purify, sterilise and deodorise the air. These ion clusters attack the cells and particles of unhealthy airborne pathogens and irritants like bacteria, viruses, mould and allergens – rendering them harmless.

In fact, Plasmacluster® ions have been scientifically proven to eliminate up to 99.7%[†] of airborne viruses. They

have also been shown to be similarly effective against airborne bacteria and airborne mould, eliminating spores in around 45 minutes.

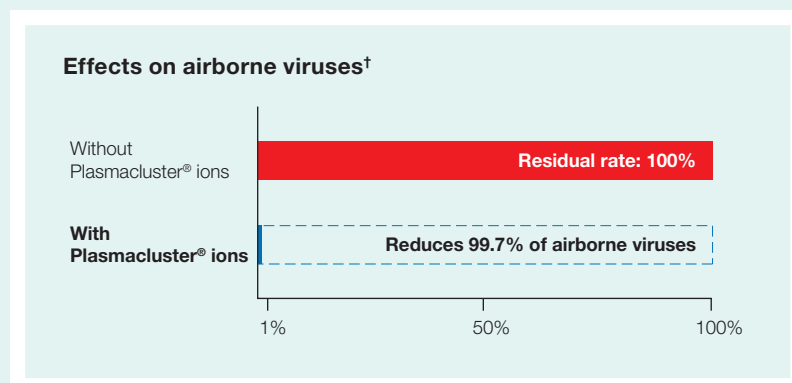
more effective than filters

Plasmacluster® purification is more effective than filter technology because it does not require air to be passed through the indoor unit to be purified. A harmless shower of naturally occurring positive and negative ion clusters is released into your room, continually cleansing the air around you.

helps your family breathe easier

Plasmacluster® ions have been shown to destroy the proteins in airborne allergens that cause asthma and other related conditions. As well, it reduces the reactivity of dust and pollens which can cause hayfever.

And you'll be pleased to know that Plasmacluster® will reduce the likelihood of cross infection of airborne pathogens. This keeps your family healthy by minimising the spread of germs should any member of your family have a cold.



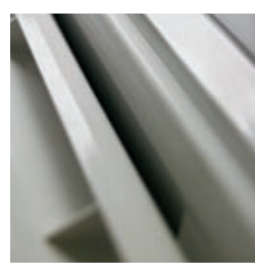
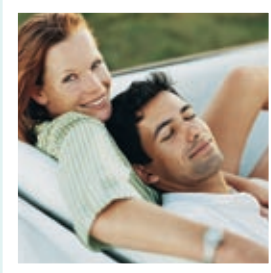
[†] Actual reduction rate may differ according to room conditions and the model in use.
 Test method – A Plasmacluster® ion generator is placed in a 1m³ box. Airborne viruses are suspended in the air inside the box followed by the release of Plasmacluster® ions. Reduction method – generate Plasmacluster ions in the air. Test performed by the Kitasato Institute Medical Centre Hospital and Kitasato Research Centre of Environment Sciences in Japan, 2002-2004. Test Report No. 00313.

breathe easier air conditioning features

Plasmacluster® is just one of the many ways that we help you breathe easier. In addition to comfort and health features, our range of air conditioners will put you at ease with their excellent efficiency, low running costs, value for money, reliability and service.

DC inverter technology

Our energy saving range of split system air conditioners are up to 30% more efficient than fixed-speed split systems. They deliver greater comfort by cooling or heating in up to 2/3 the time of non-inverter models.



contemporary styling

The modern, unobtrusive designs of the Electrolux air conditioning range will suit any interior style. They not only look great, but the slim, clean surfaces also make them easier to clean.

award-winning energy efficiency

Some of our air conditioners are amongst the most energy-efficient on the market. Energy efficient appliances cost less to operate, saving you money over the life of the product.



air purification

Whether you choose Plasmacluster® – an industry-leading active air cleansing technology, or BioFresh® hospital-grade filtration, you'll also benefit from carbon/electrostatic filters that remove noxious odours and chemicals.

excellent service

Electrolux air conditioners are backed by our Australia-wide Top Service after sales program which includes delivery, home service and a spare parts network.



quality assurance

All Electrolux split systems are fully backed by a 5 year* manufacturer's warranty for domestic applications. Portable models feature a 2 year* domestic warranty.

* Refer to page 11 for specific warranty information.



designed for a better night's rest

It's important to maintain a comfortable balance of temperature, air purity, odour, noise and humidity for a better night's rest.

BioFresh® models have been specifically designed to achieve this balance, and also feature modern styling and a luminescent LCD remote controller – making it ideal for bedrooms.



split system reverse cycle with inverter

Breathe easier in summer and winter with the superior control and precise comfort provided by an Electrolux split system reverse cycle with inverter. These top-of-the-range models offer you everything you could want in a split system air conditioner.



ESD24HRA shown

superior comfort and control

With DC inverter technology you'll enjoy greater comfort, control and energy efficiency. You'll also love the quietness of a split system inverter, and the ease of one-touch turbo cool/heat when you want to quickly boost the cooling or heating. You can also choose for the air to swing or stay fixed (in an indirect setting) to optimise air distribution without air blowing directly on you.

peace of mind

Plasmacluster® is the ideal way to purify, sterilise and deodorise the air in your living areas. The carbon filters eliminate noxious odours like ammonia and inactive harmful chemical gases such as

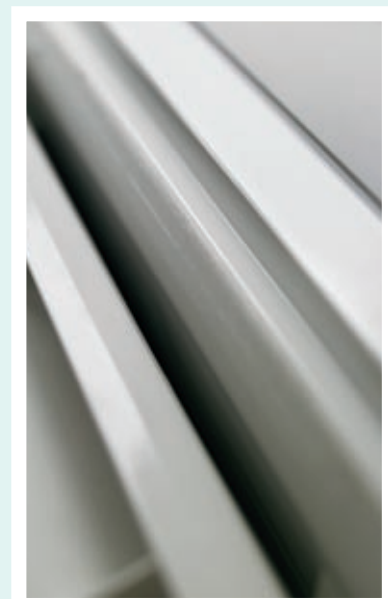
formaldehyde. And the dust filters trap small dust particles, smoke and pet fur.

easy to use

One-touch climate control is at your fingertips with a simple-to-use remote control. Other more advanced features such as timer programming functions, auto air swing and fan speed settings are provided if you need further control.

easy to clean

The contemporary clean face fascia not only looks good, it also minimises dust build-up on the front of the unit. Slim and compact, these models are unobtrusive and will suit any interior style.



split system
inverter
features†



model specifications	ESD09HRB	ESD12HRB	ESD18HRB	ESD24HRA	ESD30HRA
nominal horsepower	1.0	1.5	2.0	2.75	3.0
capacity cool watts (Btu/h)	2600 (8900)	3450 (11800)	5000 (17100)	6600 (22600)	7700 (26300)
capacity heat watts (Btu/h)	2850 (9800)	3800 (13000)	4950 (16900)	7900 (27000)	8200 (28000)
current rating (Amps)	10	10	15	20	20
indoor unit (w x h x d)mm	815 x 280 x 215	815 x 280 x 215	920 x 293 x 224	1040 x 325 x 229	1040 x 325 x 229
outdoor unit (w x h x d)mm	760 x 590 x 285	760 x 590 x 285	845 x 695 x 335	890 x 800 x 320	890 x 800 x 320
performance					
indoor sound pressure high/low (dBA)	41 / 30	43 / 30	43 / 37	47 / 36	47 / 36
outside sound power (dBA)	61	61	66	69	71
indoor air circulation max. (ltr/sec)	180	187	236	282	282
ambient temperature range (°C)	-15 to 50	-15 to 50	-15 to 50	-10 to 46	-10 to 46
moisture removal (ltr/hr)	1	1.2	1.5	2.6	3.3
star rating cool/heat	6 / 6	5.5 / 5.5	4.5 / 3.5	4 / 3	2 / 2.5
key features					
soft starter via inverter	✓	✓	✓	✓	✓
filtration	dust, carbon/ electrostatic, BioFresh® (bio/HEPA)	dust, carbon/ electrostatic, BioFresh® (bio/HEPA)	dust, carbon/ electrostatic, BioFresh® (bio/HEPA)	dust, extra dust, carbon	dust, extra dust, carbon
plasmacluster®				✓	✓
two direction air-vane	✓	✓	✓	✓	✓
anti-cold air function	✓	✓	✓	✓	✓
wireless remote control type	LCD with luminescent keypad	LCD with luminescent keypad	LCD with luminescent keypad	LCD slider with clock	LCD slider with clock
manual operation	✓	✓	✓	✓	✓
inverter override	✓	✓	✓	✓	✓
air swing auto/manual	U-D / L-R	U-D / L-R	U-D / L-R	U-D / L-R	U-D / L-R
timer/period	24 hours (countdown)	24 hours (countdown)	24 hours (countdown)	24 hours (actual) + 1 hour off function	24 hours (actual) + 1 hour off function
climate control	✓	✓	✓	✓	✓
auto restart	✓	✓	✓	✓	✓
gold shield anti-corrosion treatment	✓	✓	✓		
blue shield anti-corrosion treatment				✓ (indoor unit clear shield)	✓ (indoor unit clear shield)
warranty (years)	5 (domestic)	5 (domestic)	5 (domestic)	5 (domestic)	5 (domestic)

remote controller



ESD09HRB,
ESD12HRB,
ESD18HRB

ESD24HRA, ESD30HRA

outdoor unit



ESD09HRB, ESD12HRB and ESD18HRB

ESD24HRA and ESD30HRA

Note: Sizes may vary according to model.
Please refer to table above for dimensions.

† Refer to product information details on the back cover. For further information on our Electrolux air conditioning range, or to obtain dimension and installation requirements please call 1300 363 640 or visit www.electrolux.com.au

Please note: By law, only a licensed Room Air Conditioner installer is allowed to install split system models. In accordance with the Electrolux warranty, Electrolux is not liable if the appliance is damaged by incomplete or improper installation.

portable for flexibility

For the ultimate in flexibility, choose a portable Electrolux air conditioner.



EPV09CRA shown



be cool in no time at all

Powerful enough to cool a small room, and needing only minor installation, our portable room air conditioners can have you cool in no time at all. Because they're so affordable, even your wallet will feel relieved.

cooling you take with you

Perfect if you're renting or have a holiday house, our portable room air conditioners allow you to take your cool air with you wherever you go. Their sleek, modern design looks great anywhere, including the home or office.

breathe easier

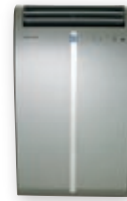
Dust filters are standard in all models, but for the ultimate in clean air you can even choose a model with Plasmacluster® filtration – the industry leading air purification system.

small unit, big on features

Fan speed control, fan-only mode, and a remote control are standard on all models. Some selected models also feature auto air swing.

At Electrolux, we really do develop everything with your comfort and needs in mind.

portable
features†



model specifications	EPV09CRA	EPV12CRA
nominal horsepower	1.0	1.25
capacity cool watts (Btu/h)	2200 (7500)	2700 (9200)
current rating (Amps)	10	10
dimensions (w x h x d)mm	470 x 820 x 383	470 x 820 x 383
performance		
indoor sound pressure high/low (dBA)	47 / 40	48 / 42
indoor air circulation max. (ltr/sec)	108	112
ambient temperature range (°C)	18 to 35	18 to 35
moisture removal (ltr/hr)	1.5	1.9
key features		
plasmacluster®	✓	✓
filtration	dust (easy clean)	dust (easy clean)
wireless remote control/type	LCD	LCD
air swing auto/manual	U-D / L-R (split)	U-D / L-R (split)
timer/period	12 hours (countdown + 1 hour off timer)	12 hours (countdown + 1 hour off timer)
anti-corrosion treatment (evaporator only)	clear shield	clear shield
window/wall duct kit	✓ (window only)	✓ (window only)
water tank volume (ltr)	2 (fixed)	2 (fixed)
water removal pump	✓	✓
weight (kg)	36	38
warranty^ (years)	2	2

^ To approved service agents - see Warranty information on page 11 for details.

remote controller



EPV09CRA,
EPV12CRA

† Refer to product information details on the back cover. For further information on our Electrolux air conditioning range, or to obtain dimension and installation requirements please call 1300 363 640 or visit www.electrolux.com.au

sizing guide how to choose the right size model for your room

Once you have selected the type of air conditioner you want (see pages 8 & 9), follow the steps below to determine which model is the right size to cool/heat your room.

Step 1. Measure the floor area
 1. What is the floor area of your room? _____m (length) x _____m (width) = _____m² **A**
 m²

Step 2. Is your room insulated?
 2. An insulated room will have less heat transfer and may require a smaller model **B**
 Yes or No

Step 3. Classify your major glass door or window direction
 3. Which direction do the major glass door/window areas in your room face?
 North or West = N/W, South or East = S/E **C**
 N/W or S/E

Step 4. Measure the glass door/window area on the walls facing in the direction specified in (C)
 4. window or door area **1** _____m (length) x _____m (width) = _____m²
 +
 window or door area **2** _____m (length) x _____m (width) = _____m²
 TOTAL of **1 + 2** above = **D** **D**
 m²
Note: If you have no external facing glass windows or doors, D = 1

Step 5. Determine your glass area ratio
 5. Divide **A** by **D** to determine **E** (ie. A ÷ D = E) **E**

Step 6. Classify your window size
 6. If **E** is less than 8 your window area is Large
 Otherwise your glass area is Small **F**
 Large or Small

Select the columns in the table below which match your answers to steps 2, 3 and 6. Move down to the section representing your chosen type of air conditioner and then choose the model that corresponds to the floor area of your room. If your floor area is not specified, use the model with the next highest floor area.

		B Ceiling insulated		YES				NO			
		C Glass area facing		North or West		South or East		North or West		South or East	
		F Window size		Large	Small	Large	Small	Large	Small	Large	Small
		model		room size m ²	room size m ²	room size m ²	room size m ²	room size m ²	room size m ²	room size m ²	room size m ²
split system inverter	ESD09HRB	16	19	18	22	14	17	15	18		
	ESD12HRB	23	23	23	27	18	22	20	23		
	ESD18HRB	34	38	38	44	31	37	33	38		
	ESD24HRA	45	53	52	63	42	51	47	52		
	ESD30HRA	50	56	57	68	47	56	52	57		
portable	EPV09CRA	14	17	15	18	13	14	14	15		
	EPV12CRA	20	24	21	25	18	20	20	21		

PLEASE NOTE: This is a guide only. Values in chart apply if air conditioners are used under average conditions and installed in accordance with manufacturer's instructions. If you are in any doubt you should perform a precise sizing calculation with a professional.

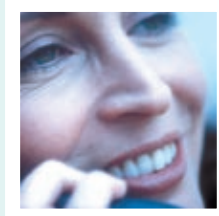
electrolux top service

Electrolux Top Service encompasses our after sales service including Delivery, Home Service and Spare Parts.



delivery

The purchase of a new appliance is an exciting experience. Electrolux customers can, for an additional charge, choose to have their new appliance delivered by our experienced staff. Delivery is available in Adelaide, Brisbane, Melbourne, Perth and Sydney. Delivery may not be available in some rural locations.



home service

Home Service is provided for repairs to appliances by trained technicians. For repairs to appliances that are outside the manufacturer's warranty period and not required as a result of a manufacturing defect, a service fee is payable. Home Service is available Australia-wide on all models except portables (return to local approved service agent).

spare parts

Home Service and Spare Parts can be contacted by phoning 13 13 49 for Service and 13 13 50 for Spare Parts (for the cost of a local call) or visit our website at www.electrolux.com.au



warranty

Electrolux Home Products warrants that the Electrolux models featured in this brochure are free from defects in materials and workmanship for periods listed in the table below:

model type	domestic	commercial
split system	2 + 3 years extended*	2 years
portable	2 years [^]	3 months [^]

* Split system models are warranted for 2 years with the extension of an additional 3 years if evidence is provided that the unit was installed by a licensed Room Air Conditioner installer.

[^] Unit must be taken to your local Electrolux approved service agent. For details contact the Customer Care Centre. All warranties are subject to the conditions set out in the warranty card accompanying the product when purchased.

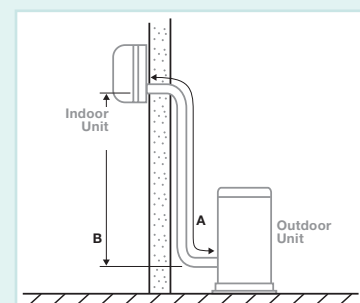
pipng length and elevation

Model	Gas pipe size	Liquid pipe size	Maximum piping length A	100% capacity length	Maximum elevation B	100% capacity elevation
ESD09HRB	9.53mm (3/8")	6.35mm (1/4")	10 metres	5 metres	8 metres	5 metres
ESD12HRB	12.7mm (1/2")	6.35mm (1/4")	15 metres	5 metres	8 metres	5 metres
ESD18HRB	12.7mm (1/2")	6.35mm (1/4")	15 metres	5 metres	8 metres	5 metres
ESD24HRA	16mm (5/8")	9.53mm (3/8")	15 metres	7.5 metres	8 metres	5 metres
ESD30HRA	16mm (5/8")	9.53mm (3/8")	30 metres	7.5 metres	10 metres	5 metres

installation requirements

Installation of air conditioners must be performed in accordance with all applicable Standard(s), Code(s), Regulation(s), Act(s) and local Service Rule(s). By law, only a licensed Room Air Conditioner installer is allowed to install split system models. In accordance with the Electrolux warranty, Electrolux is not liable if the appliance is damaged by incomplete or improper installation.

Outdoor unit must be accessible for service. If the outdoor unit is greater than 2m above the ground or otherwise inaccessible for service, additional service charges may apply.



Electrolux Home Products Australia

telephone: 1300 363 640

fax: 1800 350 067

email: customercare@electrolux.com.au

web: www.electrolux.com.au

The Thoughtful Design Innovator.

Do you remember the last time you opened a gift that made you say "Oh! How did you know? That's exactly what I wanted!" That's the kind of feeling that the designers at Electrolux seek to evoke in everyone who chooses or uses one of our products. We devote time, knowledge, and a great deal of thought to anticipating and creating the kind of appliances that our customers really need and want.

This kind of thoughtful care means innovating with insight. Not design for design's sake, but design for the user's sake. For us, thoughtful design means making appliances easier to use and tasks more enjoyable to perform, freeing our customers to experience that ultimate 21st century luxury, ease of mind. Our aim is to make this ease of mind more available to more people in more parts of their everyday lives, all over the world. So when we say we're thinking of you, you know we mean just that.

Electrolux. Thinking of you.

Share more of our thinking at www.electrolux.com.au

†product information

The descriptors and illustrations in this publication apply to the specific products and models described as at the date of issue. Under our policy of continuous product development, product specifications may change without notice. Prospective purchasers should therefore check with their retailer to ensure this publication correctly describes the products that are being offered for sale. All information supplied is to be used for general reference purposes only and is on the understanding that Electrolux Home Products Pty Ltd will not be liable for any loss, liability or damage of whatever kind arising as a result of reliance on such information. Colours of products illustrated are as close as printing limitations allow.

BioFresh® is a registered trademark of Electrolux Home Products Pty Ltd.



Plasmacluster is a trademark of SHARP Corporation.