

KÄRCHER

makes a difference



Safety instructions for window cleaner



Please read these safety instructions prior to the initial use of your appliance and act accordingly. Keep these safety instructions for future reference or subsequent owners.

- Prior to the initial start-up, observe the graphic operating instructions of your appliance and especially observe the safety instructions.
- Apart from the notes contained herein the general safety provisions and rules for the prevention of accidents of the legislator must be observed.

Proper use

- Use this battery operated appliance only for personal use, for cleaning moist, smooth surfaces such as windows, mirrors or tiles. Not meant for the vacuum of dust.
- The appliance is not intended to vacuum up larger amounts of fluids from horizontal surfaces, such as from a tipped drinking glass (max. 25 ml).
- Only use this appliance with conventional window cleaners (no spirit, no foam cleaners).
- Please use this appliance only with accessories and spare parts approved by KÄRCHER.

Any use extending beyond this is not considered as proper use. The manufacturer is not liable for any losses resulting from this; the user alone bears the risk for this.

Scope of delivery

The scope of delivery of your appliance is illustrated on the packaging. Check the contents of the appliance for completeness when unpacking.

In the event of missing accessories or any transport damage, please contact your dealer.

Environmental protection



The packaging material can be recycled. Please do not place the packaging into the ordinary refuse for disposal, but arrange for the proper recycling.



Old appliance contain valuable recyclable materials and substances that must not be released into the environment. Thus, the appliance and the accumulator contained must not be disposed of via the domestic waste. The disposal can take place via locally available return and collection systems free of charge.

Electrical and electronic devices often contain components which could potentially pose a danger to human health and the environment if handled or disposed of incorrectly. However, these components are necessary for the proper operation of the device. Devices marked with this symbol must not be disposed of with regular household rubbish.

Information on ingredients (REACH)

The latest information on ingredients can be found under:

www.kaercher.com/REACH

Transport

The battery has been tested as per the relevant directives for international transport and can be transported/shipped.

Warranty

The warranty terms published by the relevant sales company are applicable in each country. We will repair potential failures of your appliance within the warranty period free of charge, provided that such failure is caused by faulty material or defects in manufacturing. In the event of a warranty claim please contact your dealer or the nearest authorized Customer Service centre. Please submit the proof of purchase. (See address on the reverse)

Spare parts

Only use original accessories and spare parts, they ensure the safe and trouble-free operation of the device. For information about accessories and spare parts, please visit www.kaercher.com.

Danger or hazard levels

⚠ DANGER

Pointer to immediate danger, which leads to severe injuries or death.

⚠ WARNING

Pointer to a possibly dangerous situation, which can lead to severe injuries or death.

⚠ CAUTION

Pointer to a possibly dangerous situation, which can lead to minor injuries.

ATTENTION

Pointer to a possibly dangerous situation, which can lead to property damage.

Safe handling

⚠ DANGER

- *This appliance is not intended for use by persons with limited physical, sensory or mental capacities or lacking experience and/or skills, unless such persons are accompanied and supervised by a person in charge of their safety or they have received precise instructions on the use of this appliance and have understood the resulting risks.*
- *Children may only use this appliance if they are over the age of 8 and supervised by a person in charge of their safety, or if they have received instructions on the use of this appliance and have understood the resulting risks.*

- *Children must not play with this appliance.*
- *Supervise children to prevent them from playing with the appliance.*
- *Cleaning and user maintenance must not be performed by children without supervision.*

⚠ WARNING

- *Do not direct the spray jet at the eyes.*

ATTENTION

- *Do not insert objects in the exhaust air opening.*
- *Prior to using this appliance on sensitive (high shine) surfaces, test the microfibre wiping pad at an inconspicuous location.*
- *Store the appliance in an upright position only.*

Electric components

⚠ DANGER

Short circuit hazard!

- *Do not point the spray jet directly at equipment that contains electrical components, such as the insides of ovens.*
- *Do not insert conductive objects (such as screwdrivers or the like) into the charging socket.*
- *Do not touch contacts or wires.*
- *You may recharge the battery using only the original charger provided with the appliance or a charger approved by KÄRCHER.*

- *Do not expose the battery to direct sunlight, heat or fire.*
 - *Immediately replace the charger with the charging cable in case of visible damage.*
 - *The appliance contains electrical components - do not clean under running water.*
 - *Store and use the charger in dry rooms only, ambient temperature 5 - 40 °C.*
 - *Use the charger only to charge approved battery packs.*
 - *Do not charge batteries (primary cells); risk of explosion.*
 - *Do not charge damaged battery packs. Replace damaged battery packs.*
 - *Do not store battery packs along with metal objects; risk of short circuit.*
 - *Do not dispose off battery packs by throwing them into fire or into household garbage.*
 - *Avoid contact with liquids oozing out of defective battery packs. Rinse thoroughly if you accidentally come in contact with the fluid. Also consult a doctor if the fluid comes in contact with your eyes.*
 - *Never touch the mains plug with wet hands.*
- ⚠ **CAUTION**
- *Do not use the appliance if it fell down, is visibly damaged or leaking.*

Symbols on the machine

Symbols depend on the device design.



Charge the battery with the enclosed original charger or a charger approved by KÄRCHER only.

Only for appliances with removable battery



Do not throw the battery into the fire.

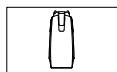


Do not throw the battery into the water.

Symbols in the operating instructions



Charging current for empty battery



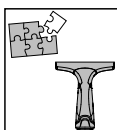
Volume of waste water tank



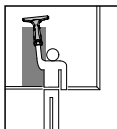
Operating time with full charge



Output voltage / output current charger



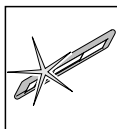
Prepare appliance



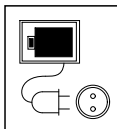
Use appliance



Empty waste water tank



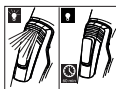
Clean the microfibre wiping cover



Charge battery using the power cord



Use the charger in dry rooms only.



Symbols depending on unit type.

After the battery has fully been charged, the LEDs are on for further 60 minutes. After this time the lights are out.

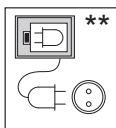


Optional accessories

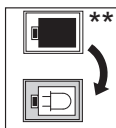
Depending on the equipment, consisting of charging station and battery.



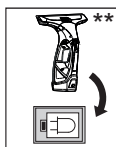
Prior to using the charging station - read safety instructions for WV-devices!



Connect charging station with power cord and plug into the mains socket.



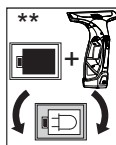
Insert the battery into the charging station.



Insert the device into the charging station.

Note

The battery must be in the device during charging.



Insert replacement battery and device into the charging station at the same time.

Notes

The battery must be in the device during charging.

The battery in the device is always fully charged first. As soon as charging is completed, the device is ready for operation. Then the charging station starts with charging the replacement battery.

Customer Service

Australia

KÄRCHER Pty. Ltd.
40 Koornang Road,
Scoresby, Victoria 3179

1800 675 714 (Free Call)
www.karcher.com.au

New Zealand

Karcher Ltd.
66 Allens Road,
East Tamaki, Auckland

(09) 274-4603
www.karcher.co.nz



<http://www.kaercher.com/dealersearch>



Alfred Kärcher GmbH & Co. KG

Alfred-Kärcher-Str. 28 - 40

71364 Winnenden (Germany)

Tel.: +49 7195 14-0

Fax: +49 7195 14-2212