

SUPER

Hero

Steam Mop 850w



BS390

Specification Parameters

Rated Voltage:	220-240V
----------------	----------

Rated Power:	850W
--------------	------

Rated Frequency:	50Hz
------------------	------

Net Weight:	1.2kg
-------------	-------

Instruction Manual

Important safety instructions

When using your Steam Mop, basic safety precautions should always be observed, including the following:

This appliance is not intended for use by persons (including children) with reduced physical, sensory or mental capabilities, Or lack of experience and knowledge, unless they have been given supervision or instruction concerning use of the appliance by a person responsible for their safety. Children should be supervised to ensure they **do not** play with the appliance.

WARNING: To reduce the risk of fire, electrical shock, or injury:

1. Read all instructions before using your steam mop.
2. Use the appliance only for its intended use.
3. **Do not** use outdoors.
4. **Do not** leave the appliance unattended when plugged in. Always unplug the power cord from the electrical outlet when not in use and before servicing.
5. **Do not** allow the appliance to be used as a toy. Close attention is necessary when used by or near children, pets or plants. Do not leave appliance unattended while connected.
6. Use only as described in this manual.
7. Use only manufacturer's recommended accessories.
8. **Do not** operate the appliance with a damaged plug or cord, or if the unit has been dropped or damaged. To avoid the risk of electric shock, **do not** disassemble or attempt to repair the appliance on your own. Return the appliance to professional service for examination and repair. Incorrect re-assembly or repair can cause a risk of electrical shock or injury to persons when the appliance is used.
9. To protect against a risk of electric shock, **do not** immerse the steam mop into water or any other liquids.
10. **Do not** pull or carry by power cord, use power cord as handle, close a door on the power cord, or pull the power cord around sharp edges or corners. Keep power cord away from heated surfaces.
11. **Do not** unplug by pulling on power cord. To unplug, grasp the plug not the power cord. **Do not** use extension cords or outlets with inadequate current carrying capacity.
12. **Do not** handle plug or steam mop with wet hands or operate appliance without shoes
13. **Do not** put any objects into openings. **Do not** use with any opening blocked.
14. **Do not** put hands or feet under the steam mop. Unit gets very hot. Danger of scalding.
15. Use **ONLY** on flat, horizontal surfaces. **Do not** use on walls, counters or windows.
16. **Do not** use on leather, wax polished furniture or floors, synthetic fabrics, velvet or other delicate, steam sensitive materials.
17. **Do not** add cleaning solutions, scented perfumes, oils or any other chemicals to the water used in this appliance as this may damage the unit or make it unsafe for use. If you live in a hard water area, we recommend using distilled water in your steam mop.
18. When in use, **NEVER** turn the appliance over or on its side. **NEVER DIRECT STEAM TOWARDS PEOPLE, ANIMALS OR PLANTS.**
19. **NEVER LEAVE THE STEAM MOP IN ONE SPOT ON ANY SURFACE FOR ANY PERIOD OF TIME WHEN MICRO-FIBRE PAD IS ATTACHED.**
20. Carefully remove the micro-fibre pad immediately after you have finished using the steam mop.
21. When cleaning the steam mop, unplug the power cord from the electrical outlet and clean with a dry or damp cloth. **Do not** pour water or use alcohol, benzene or paint thinner on the unit.
22. Extreme caution should be exercised when using this appliance to clean stairs.
23. Never use steam mop without micro-fibre pad attached.
24. Keep your work area well lit.
25. Store steam mop indoors in a cool, dry place.

ADDITIONAL IMPORTANT SAFEGUARDS

1. To avoid circuit overload, do not operate another appliance on the same socket (circuit) as the steam mop.
2. Care should be taken to arrange cord so that it cannot be pulled or tripped over.
3. **Do NOT** leave unattended when the unit is connected to a power supply/electrical outlet.

WARNING: Your steam mop is designed to clean hard floor surfaces that will withstand high heat.

Do not use on unsealed wood or unglazed ceramic floors. On surfaces that have been treated with wax or some no wax floors, the sheen may be removed by the heat and steam action. It is always recommended to test an isolated area of the surface to be cleaned before proceeding.

We also recommend that you check the use and care instructions from the floor manufacturer.

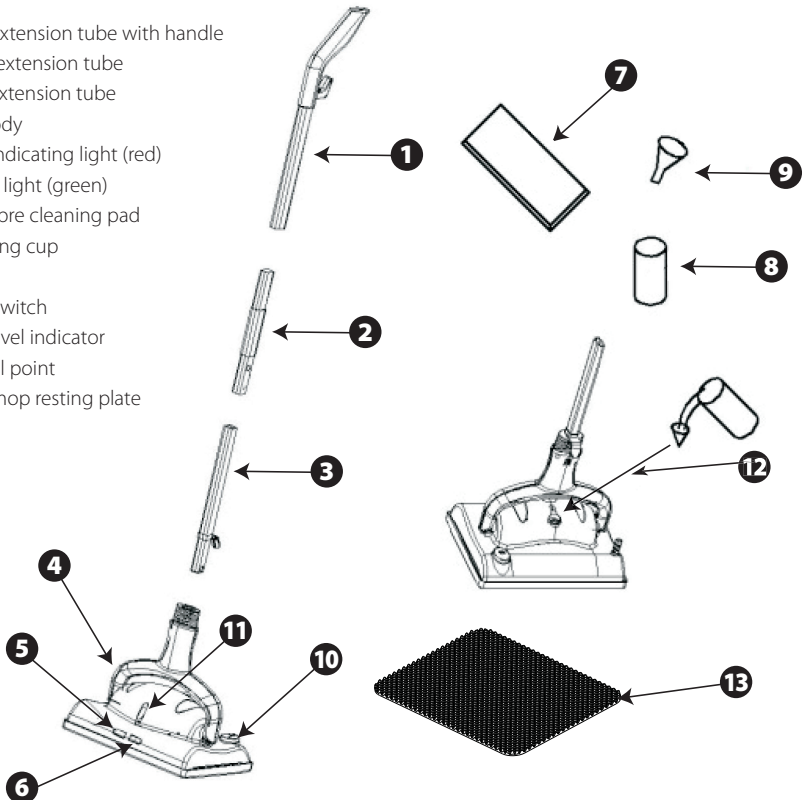
IMPORTANT: Do not store unit with damp/wet micro-fibre cleaning pad attached. Never leave the steam mop in one spot on any surface for any period of time with a damp or wet micro-fibre cleaning pad attached as this will damage your floors.

IMPORTANT: Do NOT add cleaning solutions, scented perfumes, oils or any other chemicals to the water used in this appliance. If you live in a hard water area, we recommend using distilled water in your steam mop.

WARNING: Danger of Scalding. Please use caution when using the steam mop. The steam emitted from the openings is very hot.

Assembly for model BS-390

1. Upper extension tube with handle
2. Middle extension tube
3. Lower extension tube
4. Main body
5. Power indicating light (red)
6. Heating light (green)
7. Micro-fibre cleaning pad
8. Measuring cup
9. Funnel
10. On/off switch
11. Water level indicator
12. Water fill point
13. Steam mop resting plate



Assembly and use for model BS-390

1. Assembly

a. Remove all the parts from the packaging.

b. Insert the upper extension tube into the middle & lower extension tubes. See fig. 1
Push it in until you hear it click into place.



c. Insert the extension tube assembly into the main mop connector. Make sure that the locking tab snaps into place.

d. Place the micro-fibre cleaning pad underneath the mop head. Make sure that the hook and latch strips are facing up.
See fig. 2
Press to secure.

fig. 2



2. Filling the Water Tank

IMPORTANT: Always ensure that the unit is "UNPLUGGED" from the mains power prior to initial filling and before attaching the micro-fibre cleaning pad to the bottom of the mop head. Never use the steam mop without the micro-fibre cleaning pad attached to the mop head.

a. Lift water fill cap to fill water into the water tank.
See fig. 3.

Water fill cap



fig. 3

b. Using the measuring cup and funnel, pour one flask of water into the water tank. **Do not** overfill the unit.

c. Replace the cap onto the water fill point.

3. Using the Steam Mop

IMPORTANT: Never use the steam mop without the micro-fibre cleaning pad attached to the mop head or without water in the water tank.

1. Sweep or vacuum floors before using the steam mop.
2. Unwrap the power cable from the rear power cord placement hooks completely.
3. Plug into mains power.
4. When plugged in, the LED light will turn red. Press down the on/off switch, the heating up light will turn green.
5. It takes approximately 30 seconds for the unit to heat up and the steam to be ready when the switch is pressed.
6. When the water tank is empty, the steam mop will stop emitting steam. Unplug the power cable from the mains power and refill the water tank following the instructions above.
7. When finished using the steam mop, unplug the unit from the mains power and carefully remove the micro-fibre cleaning pad from the mop head. Note that the micro-fibre cleaning pad gets very hot with the steam. Always use caution when removing.
8. **NEVER** leave the micro-fibre cleaning pad on the steam mop head when you have finished using the steam mop.

Maintenance

Always remove the micro-fibre cleaning pad and wash in warm water with a mild detergent. **Never** use bleach or fabric softener when washing the reusable micro-fibre cleaning pad. The micro-fibre cleaning pad may be washed in a washing machine. It is recommended to air dry the micro-fibre cleaning pad.

IMPORTANT: Be careful when machine washing with mixed fabrics as micro-fibre pads will pick up lint from other fabrics and the hook and latch strips will stick to other garments. It is recommended to wash the micro-fibre cleaning pad separately or placing in a garment bag.

CAUTION: Never store the steam mop with a wet or damp micro-fibre cleaning pad still attached as this will damage your floors.

Due to the unique cleaning ability of this pad, proper care of your micro-fibre cleaning pad is required to ensure long life and continued cleaning ability.

- The first thing you should do when you get a new micro-fibre cleaning pad is to wash and dry it.
- **NEVER USE BLEACH OR FABRIC SOFTENERS!** Bleach will damage the micro-fibre fabric and fabric softeners deposit a coating on the micro-fibre fabric what will not allow the pad to clean efficiently.
- As you use the micro-fibre cleaning pad, you will notice that sometimes a thread will loosen or pull out.

This is normal and you should **NEVER PULL AT THE LOOSE THREAD!** Pulling the thread can cause the weave to come undone. Instead, simply trim the thread with a pair of sharp scissors.

HELPFUL HINTS

1. Always vacuum or sweep before using the steam mop.
2. The easiest way to use the steam mop is to tilt the ergonomic handle to a 45° angle and clean slowly.
3. A good amount of steam passes through the micro-fibre cleaning pad. We recommend that the cleaning pad be changed when it gets too wet. These need to be replaced as necessary.
4. To remove stubborn stains from vinyl or linoleum floors, pre-treat with a mild detergent and some water before using the steam mop.

IMPORTANT: Never leave the steam mop in one spot on any surface for any period of time with a damp or wet micro-fibre cleaning pad attached as this will damage your floors.

If you consistently use distilled water, cleaning the water tank is unnecessary.

CAUTION: This appliance must be unplugged from the electrical outlet before performing any cleaning or maintenance tasks on the unit.

Rinsing Out the Steam Mop

1. Let the appliance cool down completely before cleaning or storing.
2. Empty all water from the water tank after each use.

Water

- Use tap water for all cleaning needs.
- However, if you live in an area with hard water, it is recommended that you use distilled water.

IMPORTANT: Do NOT add cleaning solutions, scented perfumes, oils or any other chemicals to the water used in this appliance, as this may damage it or make it unsafe for use. **Use distilled water if the tap water in your area is very hard.**

Troubleshooting

Service problems that appear to be major can often be solved easily. You can be your own troubleshooter by reviewing this guide.

All other servicing should be done by an authorised service agent or qualified technician.

Problem	Possible cause	Recommended solution
Steam mop will not operate	<ol style="list-style-type: none">1. Power cable not firmly plugged into outlet.2. No power in wall outlet.3. Needs servicing.	<ol style="list-style-type: none">1. Plug unit in firmly.2. Check fuse or breaker. Replace fuse/reset breaker.3. Contact authorised service agent.
Steam mop will not create steam	<ol style="list-style-type: none">1. No water in water tank.	<ol style="list-style-type: none">1. Add water to the water tank following instructions.
Steam mop leaves water on the floor	<ol style="list-style-type: none">1. Micro-fibre cleaning pad is too wet.	<ol style="list-style-type: none">1. Unplug unit from mains power and change the micro-fibre cleaning pad.
Steam mop left white spots on floor	<ol style="list-style-type: none">1. Steam mop left in one spot too long.2. Hard water used.	<ol style="list-style-type: none">1. Never leave the steam mop on the floor with a damp or wet cleaning pad still attached when not in use.2. Use distilled water.

Customer Care

Please contact Customer Care 1800 815 270 to find your local spare parts provider.

Part	Part Number
Replacement Pads (2 pack)	31400111
Replacement Pads (8 pack)	31400112

Warranty



Conditions of warranty

Your International Cleaning Solutions cleaner, in the case of domestic use, has a three month parts and labour warranty against product defects and failures when the product is used in accordance with the terms and conditions of this warranty statement.

This warranty commences from the original date of purchase and is not transferable; please retain your original proof of purchase for any warranty claims. This warranty is valid only in the country where the cleaner is purchased.

The cleaner must be operated in accordance with these instructions and used only for domestic household cleaning to remove DRY dirt and dust from household carpets, flooring and fabrics. This cleaner is not fit to be used as an industrial cleaner, and is not designed for the collection of vitreous building material including particle board, construction products and similar products such as wood/fibres, cement, fillers, fibre glass etc or excessive or frequent sand. The infrequent pick-up of these materials in these circumstances may be harmful to your cleaner and may void the manufacturer's warranty.

Accessories and consumables including dust bags and filters, unless defective in manufacture, are not subject to this warranty. In order to prolong the life of accessories and consumables, regular care and maintenance is recommended.

When properly used and cared for, your cleaner will render excellent service; refer to the instruction manual for further details, as misuse or failure to follow the instructions makes this warranty void.

In the event of service or advice being needed, please contact International Cleaning Solutions Pty Ltd, Level 1, Building 2 Brandon Business Park, 350 Springvale Road, Glen Waverley Victoria 3150, or on 1800 815 270, Monday-Friday 9am-5pm EST. The decision to repair or replace the cleaner is at the sole discretion of International Cleaning Solutions. If International Cleaning Solutions decide to repair or replace the cleaner, it will do so at its own cost.

International Cleaning Solutions is unable to accept responsibility under this warranty for any repair work not carried out by an authorised International Cleaning Solutions Service Agent or from the use of non-genuine parts. If any part is no longer available or manufactured, International Cleaning Solutions will replace it with a genuine functional replacement part. This warranty does not apply to the cost of replacing any parts of the product due to normal wear and tear, alterations, improper installation, physical abuse, misuse or accidental damage. Any transportation costs involved in the repair of defective parts shall be borne by the claimant.

If proof of purchase cannot be provided at the time of a warranty claim or service, any work carried out on the cleaner is chargeable.

The repair or replacement of the cleaner under this warranty does not extend the original period of warranty.

The benefits conferred by this warranty are in addition to all other rights and remedies in respect of the product as outlined under the Competition and Consumer Act and other State and Territory laws.

"Our goods come with guarantees that cannot be excluded in the Australian Consumer Law. You are entitled to a replacement or refund for a major failure and for compensation for any other reasonably foreseeable loss or damage. You are also entitled to have the goods repaired or replaced if the goods fail to be of acceptable quality and the failure does not amount to a major failure."

"Keep this warranty and your receipt as proof of purchase."

"Our policy is one of continuous development and accordingly we reserve the right to change specifications without prior knowledge."

SUPER

Hero

Steam Mop 850w



Model Number BS390

International Cleaning Solutions Pty. Ltd.
ABN 24 119 462 798
Level 1, Building 2,
Brandon Business Park
530 Springvale Road,
Glen Waverley,
Vic 3150
Customer Care: 1800 815 270

Made in China

V1 0312