

NINJA®

Pulse™

BL202NZ

OWNER'S GUIDE



IMPORTANT SAFETY INSTRUCTIONS

For Household Use Only

WHEN USING ELECTRICAL APPLIANCES, BASIC SAFETY PRECAUTIONS SHOULD ALWAYS BE FOLLOWED, INCLUDING THE FOLLOWING:

READ ALL INSTRUCTIONS BEFORE USING YOUR **NINJA®** **KITCHEN SYSTEM PULSE™**.

IMPORTANT: This appliance can be used by children aged from 8 years and above and persons with reduced physical, sensory or mental capabilities or lack of experience and knowledge if they have been given supervision or instruction concerning use of the appliance in a safe way and understand the hazards involved. Children should be supervised to ensure that they do not play with the appliance. Cleaning and user maintenance shall not be made by children without supervision.



WARNING:

TO REDUCE THE RISK OF FIRE, ELECTRIC SHOCK OR INJURY:

1. To protect against electrical shock, do not submerge the appliance or allow the power cord to come into contact with water or any other liquid.
2. **DO NOT** allow young children to operate the appliance or use as a toy. Close supervision is necessary when any appliance is used by or near children.
3. Never leave an appliance unattended when in use.
4. Remove the power cord from the electrical outlet when not in use, before assembling or disassembling parts and before cleaning. To unplug, grasp the plug and pull from the electrical outlet. Never pull from the power cord.
5. **DO NOT** abuse the power cord. Never carry the appliance by the power cord or yank it to disconnect from electrical outlet; instead grasp the plug and pull to disconnect.
6. **DO NOT** operate the appliance with a damaged plug or cord, or if the unit has been dropped, damaged or dropped in water. To avoid the risk of electric shock, do not disassemble or attempt to repair the appliance on your own. If the supply cord is damaged, it must be replaced by a qualified electrician in order to avoid a hazard. Incorrect re-assembly or repair can cause a risk of electrical shock or injury to persons when the appliance is used.
7. **DO NOT** let the power cord hang over the edge of table or counter or touch hot surfaces such as the stove.



8. Always use appliance on a dry, level surface.
 9. Keep hands, hair, clothing, as well as utensils out of container while processing to reduce the risk of severe injury to persons or damage to the appliance. A scraper may be used but only when the appliance is not running.
 10. **CAUTION:** Blade assembly is sharp, handle with care. When handling the blade assembly, always hold by the shaft or collar.
 11. Avoid contact with moving parts.
 12. **DO NOT attempt to sharpen blades.**
 13. **DO NOT** use the appliance if blade assembly is bent or damaged.
 14. To reduce risk of injury, never place the blade assembly on the base without the pitcher or bowl properly attached.
 15. **DO NOT** operate this appliance on or near any hot surfaces (such as gas or electric burner or in a heated oven).
 16. The use of attachments or accessories including canning jars, not recommended by the manufacturer may result in fire, electric shock or personal injury.
 17. **DO NOT** remove the container from the motor base while the appliance is in operation.
 18. To reduce the risk of injury, **NEVER** operate the appliance without the lid in place; **DO NOT** try to defeat the interlock mechanism; make sure that the attachment is properly installed before operating the appliance.
 19. **DO NOT** expose containers to extreme temperature changes.
 20. **DO NOT** blend hot liquids.
 21. **DO NOT** overfill.
 22. **DO NOT** operate the appliance empty.
 23. **CAUTION:** When mixing pizza dough or any heavy mix such as bread dough or pastry dough, mix for up to 1 minute, then let the appliance rest for approximately 1 minute before mixing again to prevent overheating of the appliance.
 24. **IMPORTANT:** When chopping, operate the appliance for 15 seconds and let it rest for 1 minute before chopping again.
 25. If the appliance overheats, a thermal switch will become activated and shut off the motor. To reset, unplug the appliance and let it cool down for approximately 30 minutes before using again.
 26. **THIS PRODUCT IS INTENDED FOR HOUSEHOLD USE ONLY.** Do not use this appliance for anything other than its intended use. Do not use outdoors.
 27. Keep the pour spout closed when blending to prevent splashing.
- ⚠ WARNING:** Extension cords are not recommended for use with this product.

SAVE THESE INSTRUCTIONS



THIS BOOK COVERS MODEL NUMBERS:

BL202NZ 30

TECHNICAL SPECIFICATIONS

Voltage: 220-240V~, 50Hz.

Power: 700 Watts

Bowl Capacity: 1.1 Litre

Single Serving Cup Capacity: 450 ml



Z854
SAA120159EA

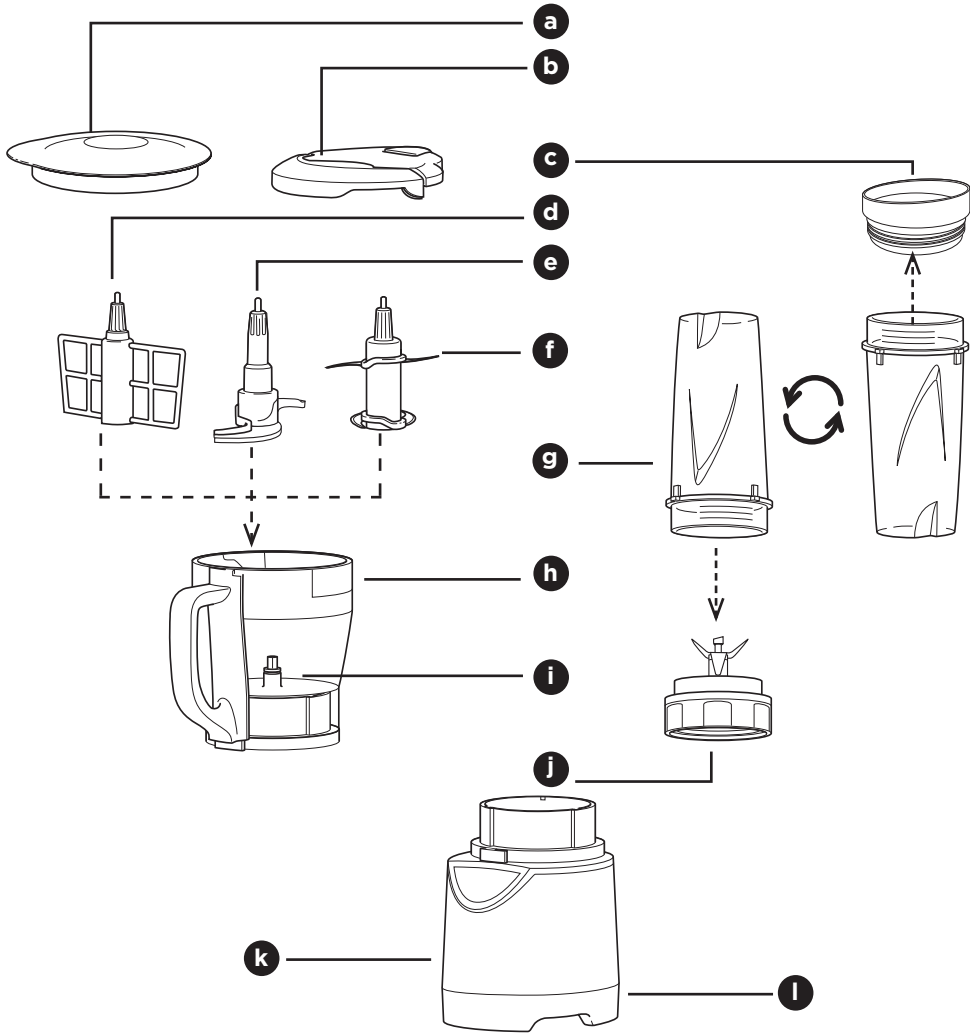
Contents

Thank you for purchasing the **Ninja® Kitchen System Pulse™**.

Getting to Know Your Ninja® Kitchen System Pulse™	6
Assembling the Ninja® Kitchen System Pulse™	8
Assembly and Use for the Single Serve Cup.....	9
Assembly and Use for the Bowl	10
Suggested Uses	11
Care & Maintenance	12
Troubleshooting Guide	13



Getting To Know Your Ninja® Kitchen System Pulse™



- | | |
|--|--|
| <ul style="list-style-type: none"> a 1.1L Bowl Storage Lid b 1.1 L Bowl Lid with Locking Handle c To-Go Single Serve Lids (x2) d Cookie Paddle (1.1 L bowl) e Dough Blade (1.1 L bowl) f 4-Blade Assembly (1.1 L bowl) | <ul style="list-style-type: none"> g Single Serve Drink Cups (x2) h 1.1 L Bowl i Drive Gear j Single Serve Blade k Motor Base l Power Cord (not shown) |
|--|--|

NOTE: Attachments are not interchangeable.

The **Ninja® Kitchen System Pulse™** is a high powered innovative tool with a compact design and outstanding performance. It is perfect for ice crushing, chopping, blending, kneading and complete juicing. The **Ninja® Kitchen System Pulse™** also features a unique capability to knead dough for cookies, breads, pizza and more! Blend and go with the convenient single serve cup, create delicious drinks to get you out the door! Best results are achieved when you **Pulse**.



FEATURES:

- **Ninja® Blade Technology**
- **1.1 L Bowl and Single Serve Drink Cup - BPA Free**
- **Cord storage**
- **Pulse Power:** Controlled blending, processing, juicing, and kneading by using short pulses. In short intervals, press down on the top of the single serve drink cup or the handle of the bowl lid and pulse to the perfect consistency.
- **Single Serve Blending:** Fill, blend, and go! Blend right in the single serve drink cup and twist on the to-go lid for a healthy, convenient snack with little clean up.
- **Dough Mixing:** Mix and knead pizza dough, cookie dough, bread dough and more!

For best results, be sure to carefully read all the instructions contained in the manual before using this appliance.

Assembling the *Ninja® Kitchen System Pulse™*

PLEASE KEEP THESE IMPORTANT SAFEGUARDS IN MIND WHEN USING THE APPLIANCE:

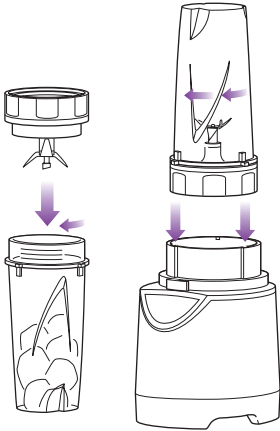
- ⚠ IMPORTANT:** Always place the attachment in the 1.1 L bowl before adding any ingredients.
- ⚠ IMPORTANT:** Attachments are **not** interchangeable.
- ⚠ CAUTION:** Blades are sharp! Use extreme caution when handling the blade assemblies. Always hold them by the shaft.
- ⚠ IMPORTANT:** When mixing dough. Mix dough for up to 1 minute, then let appliance rest for 1 minute before mixing again.
- ⚠ IMPORTANT:** Never run the appliance empty.
- ⚠ CAUTION:** Never attempt to remove the container while the appliance is still running.
- ⚠ WARNING:** Never leave the appliance unattended while in use.

BEFORE FIRST USE

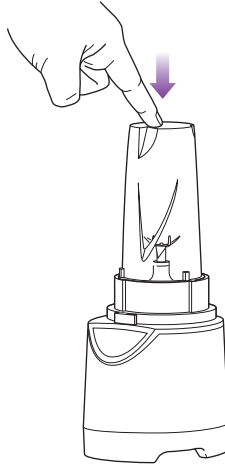
- 1 Remove all packaging material and labels from the appliance.
- 2 Wash the lids, bowl, single serve cups and attachments in warm, soapy water with a soft cloth. **Use caution when washing the blade assemblies as the blades are very sharp.**
- 3 Rinse and dry thoroughly.
- 4 The bowl, single serve cups, lids and attachments are all dishwasher safe. It is recommended that the lids and attachments be placed on the top rack. Ensure that the attachments are removed from the containers before placing in the dishwasher.
- 5 Wipe the motor base clean with a damp cloth.

Assembly and Use for the Single Serve Cup

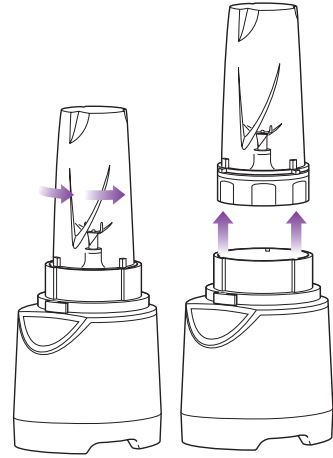
ASSEMBLY



PULSE



REMOVAL



 For best results, use short **"PULSES"**... Practice makes perfect!!

⚠ IMPORTANT: Make sure that the motor base is plugged in for use.

- 1 Place the motor base on a clean, dry, level surface such as a counter or table top.
- 2 Add ingredients to the single serve cup.
- 3 Place the single serve blade onto the cup and screw it tightly until you have a good seal. (Fig. 1)
- 4 Turn the single serve cup upside down and place it onto the motor base, aligning the tabs on the cup with the motor base. Turn to the left, the unit is ready for use. (Fig. 2)
- 5 Press down on the top of the cup in short intervals to activate. (Fig. 3)

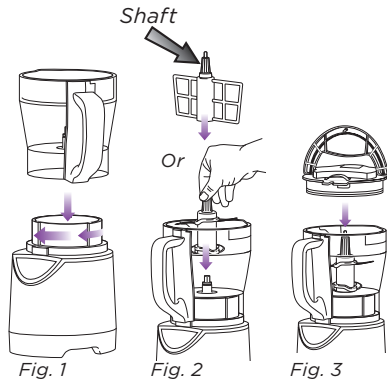
- 6 When you have reached your desired consistency, stop the appliance by removing your hand from the single serve cup. Then turn the single serve cup to the right (Fig. 4) and pull straight up to remove. (Fig. 5)

NOTE: Do not overfill! To avoid spilling, do not add ingredients past the "Max" fill line.

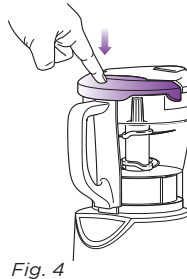
- 7 Turn the cup upright and remove the single serve blade.
- 8 Place the To-Go drinking lid onto the single serve drink cup, twist to seal and enjoy!
- 9 Make sure that the motor base is unplugged when not in use.

Assembly and Use for the Bowl

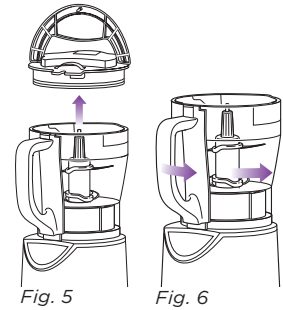
ASSEMBLY



PULSE



REMOVAL



 It's best to add the liquid ingredients first and then the dry ingredients.

⚠ IMPORTANT: Make sure that the motor base is plugged in for use.

- 1 Place the motor base on a clean, dry, level surface such as a counter or table top.
- 2 Align and lower the bowl onto the motor base. (Fig. 1) Handle should be aligned slightly to the left of the "LOCK" symbol on the motor base.
- 3 Rotate the container to the left as far as it will go to lock in place. (Fig. 1)
- 4 Holding the desired attachment by the shaft, place it onto the drive gear inside the container. Ensure that the attachment is seated properly and is standing upright. (Fig. 2)
NOTE: The blade will fit loosely on the drive gear.
- 5 Add the ingredients to the bowl, making sure that they do not exceed the highest measured marking line on the side of the bowl.
- 6 Holding the lid by the handle in the upright position, place it on top of the bowl aligning the arrow (▼) located on

the lid with the arrow (▲) located on the bowl's handle. (Fig. 3)

- 7 Push down on the "PULSE" on the handle to start the appliance. (Fig. 4)
NOTE: Pulse ingredients for even chopping by pressing down in short intervals.

⚠ IMPORTANT: When using the dough blade or cookie paddle hold the appliance to secure the appliance to the counter or table top.

- 8 When you have reached your desired consistency, stop pressing the lid handle and wait for the attachment to stop turning.
- 9 To remove the lid, pull the lid handle up to a 90° angle. Turn the bowl anti clockwise to lift off the base. (Fig. 5, Fig. 6)

⚠ CAUTION: Never insert your hands in the pitcher as the blades are sharp. Always use a spatula to dislodge food that has stuck to the sides of the pitcher.

- 10 Make sure that the unit is unplugged when not in use.

Suggested Uses

FUNCTION	CONTAINER	ATTACHMENT	TYPE OF FOOD
Mincing	Single Serve 1.1 L Bowl	Blade Assembly	Onion Garlic Herbs
Kneading*	1.1 L Bowl	Dough Blade	Bread Dough Pizza Dough
Dough Mixing*	1.1 L Bowl	Cookie Paddle	Cookie Dough Dessert Bars Biscuits Scones Batters
Blending	Single Serve 1.1 L Bowl	Blade Assembly	Smoothies Milkshakes Frozen Drinks Dips Spreads
Grating	Single Serve 1.1 L Bowl	Blade Assembly	Cheese Bread Crumbs
Chopping**	1.1 L Bowl	Blade Assembly	Salsa Vegetables Egg Salad Honey and Peanuts
Ice Crushing	Single Serve 1.1 L Bowl	Blade Assembly	Ice Slushies Snow Cones
Complete Juicing	Single Serve 1.1 L Bowl	Blade Assembly	Fruit & Vegetable Drinks

⚠️ *IMPORTANT: When mixing pizza dough or any heavy mix such as bread dough or pastry dough, mix for up to 1 minute, then let the appliance rest for approximately 1 minute before mixing again to prevent overheating of the appliance.

⚠️ **IMPORTANT: When chopping, operate the appliance for 15 seconds and let it rest for 1 minute before chopping again.

Care & Maintenance

HOW TO CLEAN

⚠ CAUTION: Make sure that the motor base is unplugged from the power source before inserting or removing any attachment and before cleaning.

⚠ CAUTION: DO NOT immerse the motor base into water or any other liquid.

- 1 Separate/remove all parts from each other.
- 2 Clean the motor base and gear shaft with a damp cloth and wipe dry.
- 3 Place the bowl and single serve cups in the dishwasher. Place the lids and attachments on the top rack. **Use caution when handling the blade assemblies as the blades are very sharp.**

NOTE: You may also wash the containers by filling the container with no more than 700 ml of warm water and a drop of dish washing detergent, placing the corresponding lid on the container and pulsing a few times. Do not fill the container with more than 700 ml of water because it will overflow. Once clean, remove the container from the motor base. Rinse the container, attachment and lid under running water. Allow all the parts to dry before storing.

HOW TO STORE

- 1 Store the **Ninja® Kitchen System Pulse™** upright with the 1.1 L bowl on the motor base, 4-Blade assembly inside and lid on the bowl. Secure the power cord underneath the base by wrapping the cord around the cord wrap. Do not place anything on top. Store the single serve cups and the rest of the attachments along side the appliance where they will not be damaged and won't cause a hazard.

RESETTING THE MOTOR THERMOSTAT

The **Ninja® Kitchen System Pulse™** features a unique safety system which prevents damage to the unit's motor and drive system should you inadvertently overload your appliance. If the appliance is being overloaded, the motor will stop. To reset the appliance, follow the resetting procedure below:

- 1 Unplug the appliance from the electrical outlet.
- 2 Remove and empty the container and ensure that no food is jamming the cutting blades or attachments.
- 3 Allow the appliance to cool for approximately 30 minutes.
- 4 Re-install the container onto the base and re-plug the appliance into the electrical outlet.
- 5 Proceed to use the appliance as before making sure not to exceed the recommended maximum capacities.

Troubleshooting Guide

PROBLEMS	POSSIBLE REASONS & SOLUTIONS
Motor Doesn't Start or Attachment Doesn't Rotate.	<ul style="list-style-type: none"> • Make sure the container is securely aligned and locked, (1.1 L bowl) on the motor base. • For the single serve cup, make sure that the tabs are seated in the slots and turned to the left. • Make sure the lid is securely on the container (1.1 L bowl) in the correct position with the arrows aligned. • Check that the plug is securely inserted into the electrical outlet. • Check the fuse or circuit breaker in your electrical box. • The unit could be overloaded. Unplug and wait approximately 30 minutes before using again. • The unit could be overheated. Unplug the unit and wait 30 minutes to reset.
Food is Unevenly Chopped.	<ul style="list-style-type: none"> • Either you are chopping too much food at once, or you are not pulsing properly. Remove some of the food items.
Food is Too Finely Chopped or Too Watery.	<ul style="list-style-type: none"> • The food has been over processed. Pulse ingredients for best results. Press down on the single serve cup or lid handle in short intervals.
You Cannot Achieve Snow From Ice Cubes.	<ul style="list-style-type: none"> • For best results use ice straight from the freezer. Try using short pulses instead of one long one.
Single serve cup is leaking.	<ul style="list-style-type: none"> • Make sure that the single serve blade set is tightly screwed on to the cup before blending. Turn the lid tightly clockwise.
Unit doesn't turn on.	<ul style="list-style-type: none"> • Make sure the unit is plugged in. • Rotate and press down on the single serve cup or the "pulse" handle on the lid to turn the unit on.
Unit doesn't turn off.	<ul style="list-style-type: none"> • Release your hand from the single serve cup or the "pulse" handle on the lid to turn the unit off.
Doesn't mix well.	<ul style="list-style-type: none"> • Pulse ingredients for best results. Press down on the cup in short intervals for even blending and chopping. For frozen ingredients, pulse in short intervals of 2-5 seconds and repeat.

ONE (1) YEAR LIMITED REPLACEMENT WARRANTY STATEMENT

If your product becomes defective due to faulty material or workmanship within a period of 1 year from the date of purchase, we warrant to do the following:

- **For New Zealand Consumers:** We will replace the product with a new product, free of charge, or repair the product at our cost, at our discretion.
- **For Australian Consumers:** Our goods come with guarantees that cannot be excluded under the Australian Consumer Law. You are entitled to a replacement or refund for a major failure and for compensation for any other reasonably foreseeable loss or damage. You are also entitled to have the goods repaired or replaced if the goods fail to be of acceptable quality and the failure does not amount to a major failure.

Your warranty is subject to the following conditions:

- **DO NOT** operate the appliance with a damaged plug or cord, or if the unit has been dropped, damaged or dropped in water. To avoid the risk of electric shock, do not disassemble or attempt to repair the appliance on your own. If the supply cord is damaged, **it must be replaced by a qualified electrician in order to avoid a hazard.** Incorrect re-assembly or repair can cause a risk of electrical shock or injury to persons when the appliance is used.
- The product has not been misused, abused, neglected, altered, modified or repaired by anyone.
- The product has been subjected to fair wear and tear.
- The product has not been used for trade, professional or hire purposes.
- The product has not sustained damage through foreign objects, substances or accident.

Your warranty does not cover:

- Components that are subject to natural wear and tear caused by normal use in accordance with operating instructions.
- Unauthorised/improper maintenance/handling or overload is excluded from this warranty.
- For guarantee claims you will need to submit a proof of purchase in the form of a valid receipt that displays date and place of purchase.

This warranty does not replace but is in addition to your statutory rights.

This warranty does not apply to accessories supplied with the product.

This warranty applies only to the original purchaser and may not be transferred.

Replacement products will be covered by the limited warranty for the balance of the warranty period from the date of the original purchase.

Please note:

Only defective product or parts returned to place of purchase will be replaced under this warranty.

New Zealand Contact:

Brand Developers Limited
Level 1, 519-521 Lake Rd, Takapuna,
North Shore City 0622, Auckland, New Zealand
Private Bag 93204, Parnell, Auckland 1151
FAX: +64 9 306 8203
NZ Customer Care 0800 002 999

Australia Contact

Brand Developers Aust Pty Ltd
461 Plummer Street,
Port Melbourne, VIC 3207
FAX: +61 3 9681 7825
AUST Customer Care: 1800 890 840



Brand Developers Aust Pty Ltd

461 Plummer Street
PORT MELBOURNE, VIC 3207
FAX: +61 3 9681 7825
AUST Customer Care: 1800 890 840



Brand Developers Ltd

Level 1, 519-521 Lake Rd,
Takapuna, North Shore City 0622
Auckland, New Zealand
NZ Customer Services: 0800 002 999

Printed in China

Illustrations may differ from actual product.

BL202NZ.E.120626.3



Z854

SAA120159EA

