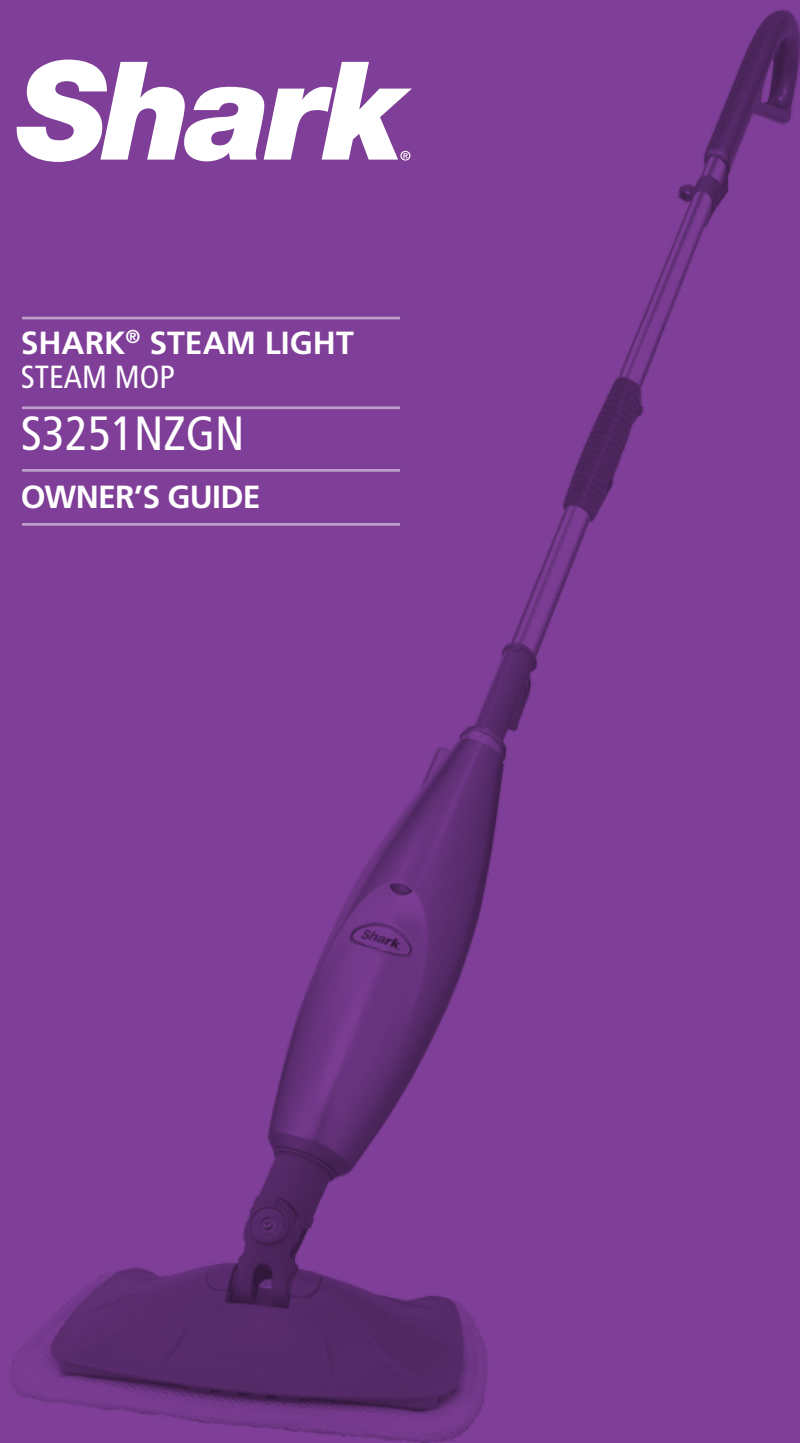


Shark®

**SHARK® STEAM LIGHT
STEAM MOP**

S3251NZGN

OWNER'S GUIDE



IMPORTANT SAFETY INSTRUCTIONS

SAVE THESE INSTRUCTIONS

For Household Use Only

WHEN USING YOUR **SHARK®** STEAM MOP, BASIC SAFETY PRECAUTIONS SHOULD ALWAYS BE FOLLOWED, INCLUDING THE FOLLOWING:

WARNING: TO REDUCE THE RISK OF FIRE, ELECTRIC SHOCK OR INJURY READ ALL INSTRUCTIONS BEFORE USING YOUR **SHARK® STEAM LITE**.



DANGER OF SCALDING.

Please use caution when using the steam mop. The steam emitted from the openings is very hot.


IMPORTANT:

This appliance is not intended for use by persons (including children) with reduced physical, sensory or mental capabilities or lack of experience and knowledge, unless they have been given supervision or instruction concerning the use of the appliance by a person responsible for their safety.

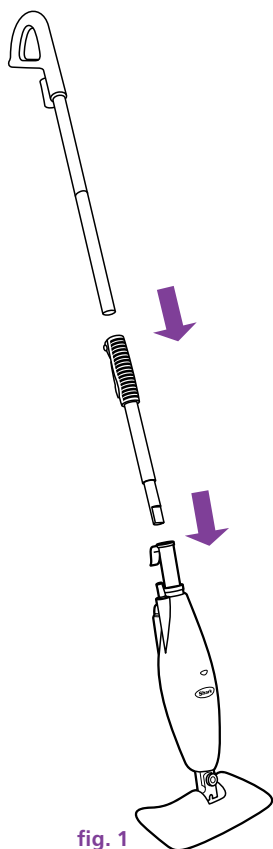
Children should be supervised to ensure that they do not play with the appliance.

1. Use the system only for its intended use.
2. **DO NOT** use outdoors.
3. **DO NOT** leave the appliance unattended when plugged in. Always unplug the power cord from the electrical outlet when not in use and before servicing.
4. **DO NOT** allow the appliance to be used as a toy. Close attention is necessary when used by or near children, pets or plants.
5. Use only as described in this manual.
6. Use only manufacturer's recommended accessories.
7. **DO NOT** operate the appliance with a damaged plug or cord, or if the unit has been dropped or damaged. To avoid the risk of electric shock, do not disassemble or attempt to repair the appliance on your own. If the supply cord is damaged, it must be replaced by a qualified electrician in order to avoid a hazard. Incorrect re-assembly or repair can cause a risk of electrical shock or injury to persons when the appliance is used.
8. To protect against a risk of electric shock, **DO NOT** immerse the steam mop into water or any other liquids.
9. **DO NOT** handle plug or steam mop with wet hands or operate appliance without shoes.
10. **DO NOT** pull or carry by the power cord, use the power cord as a handle, close a door on the power cord, or pull the power cord around sharp edges or corners. Keep power cord away from heated surfaces.

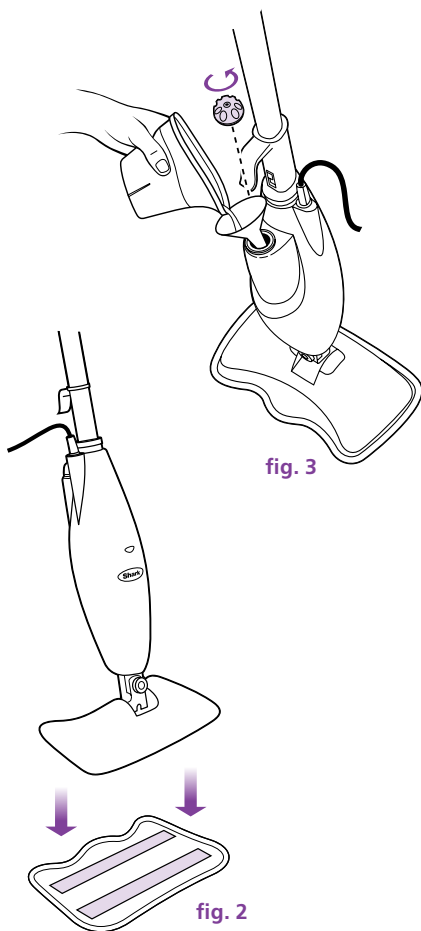
11. **DO NOT** unplug by pulling on power cord. To unplug, grasp the plug not the power cord. Do not use extension cords or outlets with inadequate current carrying capacity.
12. **DO NOT** put any objects into openings. Do not use with any opening blocked.
13. **DO NOT** put hands or feet under the steam mop as the unit gets very hot.
14. Use **ONLY** on flat, stable horizontal surfaces. Do not use on walls, counters, windows, chairs or tables.
15. **DO NOT** use on leather, wax polished furniture or floors, synthetic fabrics, velvet or other delicate, steam sensitive materials.
16. Liquid or steam must not be directed towards equipment containing electrical components, such as the interior of ovens.
17. **DO NOT** add cleaning solutions, scented perfumes, oils or any other chemicals to the water used in this appliance as this may damage the unit or make it unsafe for use. If you live in a hard water area, we recommend using distilled water in your steam mop.
18. When in use, **NEVER** turn the appliance over or on its side. **NEVER DIRECT STEAM TOWARDS PEOPLE, ANIMALS OR PLANTS.**
19. **NEVER LEAVE THE CLEANING UNIT IN ONE SPOT ON ANY SURFACE FOR ANY PERIOD OF TIME WHEN MICROFIBRE PAD IS ATTACHED.**
20. Carefully remove the microfibre pad immediately after you have unplugged and allowed the product to cool.
21. When cleaning the steam mop, unplug the power cord from the electrical outlet and clean with a dry or damp cloth. Do not pour water or use alcohol, benzene or paint thinner on the unit.
22. To reduce the risk of fire, **DO NOT** use a flammable or combustible liquid to clean a floor.
23. Extreme caution should be exercised when using this appliance to clean stairs.
24. Never use the steam mop without microfibre pad attached.
25. Keep your work area well lit.
26. Store steam mop indoors in a cool, dry place.
27. To avoid circuit overload, do not operate another appliance on the same socket (circuit) as the steam cleaner.
28. If an extension cord is absolutely necessary, an extension cord rated a minimum of 15 ampere, 14 gage cord should be used. Cords rated for less amperage may overheat. Care should be taken to arrange the cord so that it cannot be pulled or tripped over.
29. **DO NOT** leave unattended when the system is connected to a power supply or electrical outlet. Turn off all controls before unplugging the unit.
30. **DO NOT** store the unit with a damp or wet microfibre cleaning pad attached.

 **WARNING:** Your steam mop is designed to clean hard floor surfaces that will withstand high heat. Do not use on unsealed wood or unglazed ceramic floors. On surfaces that have been treated with wax or some no wax floors, the sheen may be removed by the heat and steam action. It is always recommended to test an isolated area of the surface to be cleaned before proceeding. We also recommend that you check the use and care instructions from the floor manufacturer.

Quick Start



- ASSEMBLE**
- 1 Fit the extension tubes together, as shown in the illustration. (fig. 1)
 - 2 Place the microfibre cleaning pad underneath the mop head, with quick fastener strips facing up. Simply press the mop to the pad to attach it. (fig. 2)



- FILL**
- 3 Remove the cap to fill the water tank. Use the filling flask and funnel to fill the tank with water to the "MAX" fill line. Replace the water tank cap. (fig. 3)



- QUICK TIP:** For easier pushing and pulling, extend the handle length.

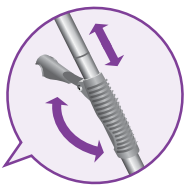


fig. 4

STEAM CLEANING

- For your comfort, you can adjust the height of the mop. Just lift the latch on the tube 90 degrees to the open position. Holding the handle, extend the tube to the desired height and then close the latch to the locked position.
- Plug in the mop. Wait 30 seconds for the unit to heat up and the steam to be ready. Push the handle toward the mop head in a pumping motion. Customise steam output by slow or fast mopping with a forward and backward motion. (fig. 4)

NOTE: Do not leave your Steam Mop unattended during use.

IMPORTANT: Never leave the steam mop in one spot for any period of time with a damp or wet microfibre pocket attached as this will damage your floors.

THIS BOOK COVERS MODEL NUMBER:

S3251NZGN 11

TECHNICAL SPECIFICATIONS

Voltage: 220-240V~, 50/60Hz.

Power: 1550W

Water
Capacity: 250 ml (8 oz.)



CUSTOMER CARE - NZ: 0800 002 999

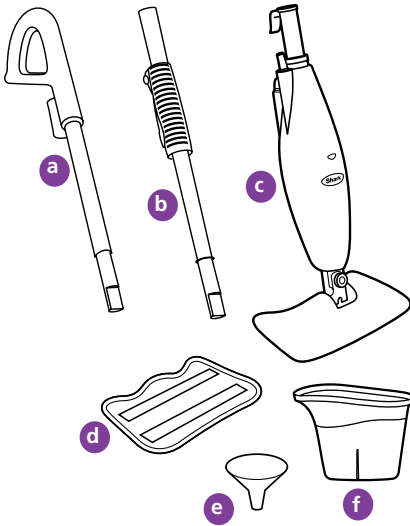
Contents

Thank you for
purchasing the
***Shark® Steam
Lite Steam Mop.***

GETTING STARTED	2
USING YOUR STEAM MOP	6
CARE OF YOUR STEAM MOP.....	8
TROUBLESHOOTING.....	10

Getting Started

When assembling your steam mop there may be a little water in or around the water tank. This is because we test all our steam mops 100% before you buy them, so you get a quality **Shark® Steam Lite Steam Mop**.



- a Upper Extension Tube
- b Lower Extension Tube (Telescopic)
- c Steam Mop Base
- d Microfibre Cleaning Pad
- e Funnel
- f Filling Flask

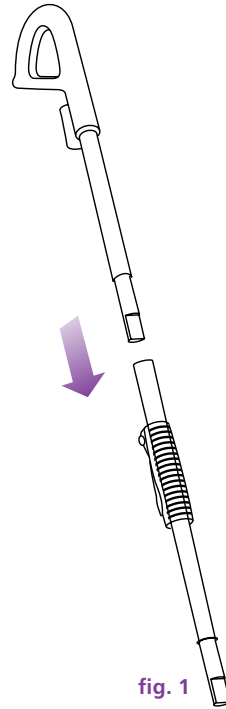


fig. 1

ASSEMBLY

- 1 Remove all the parts from the package. Verify all the listed parts are included.
- 2 Slide the upper extension tube (the tube with the handle) into the lower extension tube (the short tube). Push the two extension tubes together until they click into place. (**fig. 1**)

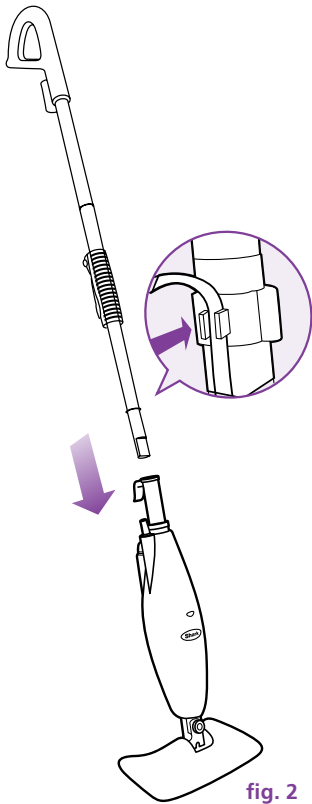


fig. 2

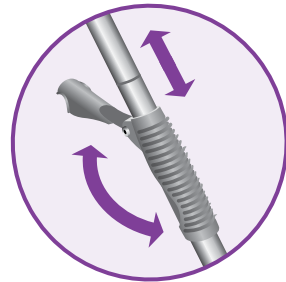


fig. 3

- 3 Insert the assembled handle piece into the steam mop base. Push the tube base together until you hear a click. (fig. 2)
 - 4 For your comfort, you can adjust the height of the mop. Just lift the latch on the tube 90 degrees to the open position. Holding the handle, extend the tube to the desired height and then close the latch to the locked position. (fig. 3)
- QUICK TIP:** For easier pushing and pulling, extend the handle length.

IMPORTANT: Never use the *Shark® Steam Lite* Steam Mop without attaching a microfibre cleaning pad to avoid damage to your floor and mop.

IMPORTANT: Do not use on unsealed wood or unglazed ceramic floors. On surfaces that have been treated with wax or some no wax floors, the sheen may be removed by the heat and steam action. It is always recommended to test an isolated area of the surface to be cleaned before proceeding. We recommend that you check the use and care instructions from the floor manufacturer.

Getting Started

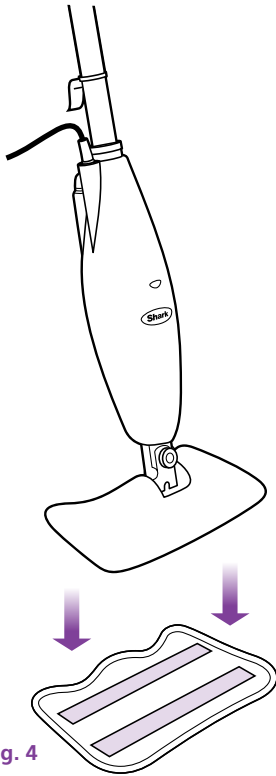





fig. 4

ATTACHING THE MICROFIBRE PAD

- 1 Place the microfibre cleaning pad on the floor with the quick fastener strips facing up. Place the **Shark® Steam Lite** Steam Mop on the top of the pad to attach. (fig. 4)

 Your microfibre cleaning pads should be replaced every 3 months to maximise cleaning performance.

-  **IMPORTANT:** Only add water to the tank. Chemicals or cleaning solutions may be unsafe or cause damage.
-  **IMPORTANT:** Please wait 3-5 minutes for your **Shark® Steam Lite** Steam Mop to cool off before removing the microfibre pad.

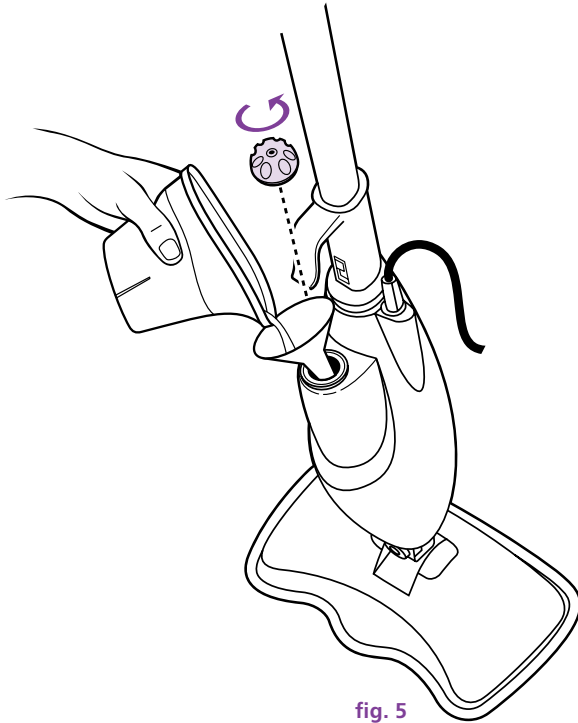


fig. 5

FILLING THE WATER TANK

- !** **IMPORTANT:** Unplug the *Shark® Steam Lite* Steam Mop before filling the water tank with water.
- 1 Remove the water tank cap by turning it counter-clockwise to the unlocked position. (fig. 5)
 - 2 A filling flask and funnel are included with your *Shark® Steam Lite* Steam Mop to make filling the water tank easy. Fill the flask with water and use the funnel to pour it into the tank. Keep the water level under the "MAX" fill line.
 - 3 Replace the water tank cap and turn it clockwise to the locked position.

Using Your Shark® Steam Lite Steam Mop

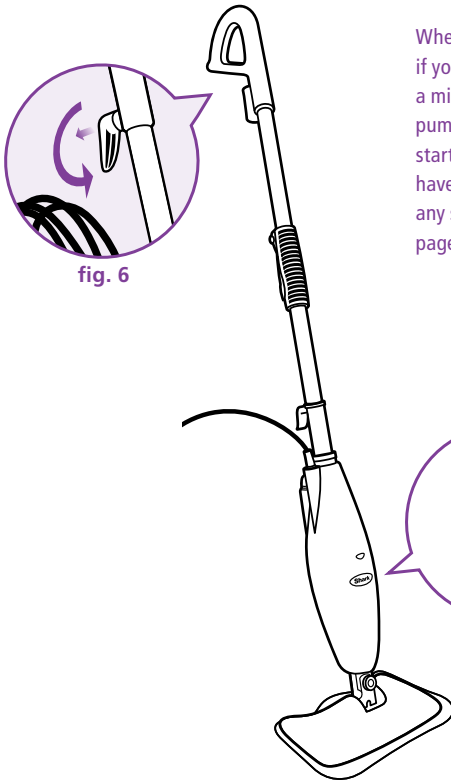


fig. 6

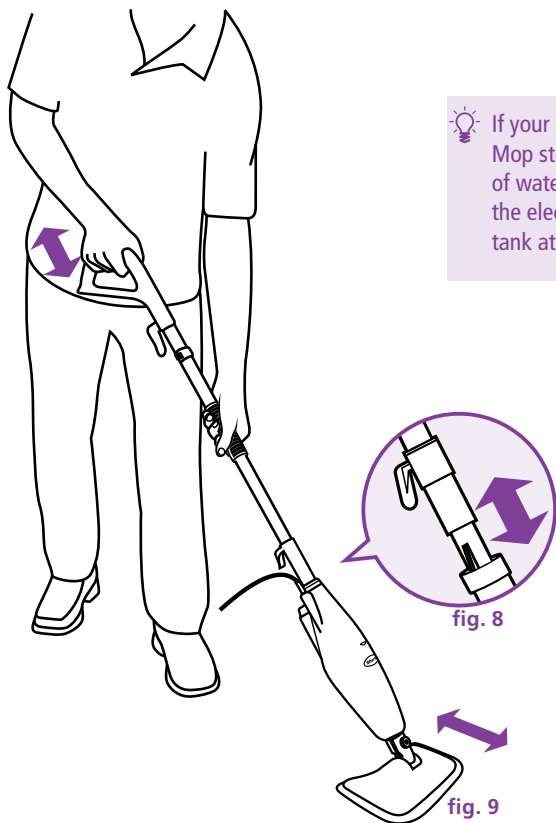
When you use your steam mop for the first time or if you have not used the unit in awhile, it may take a minute or two for the water to travel through the pump and into the heater to create steam. Get it started by pumping the handle a few times. If you have waited a few minutes and you still do not see any steam, reference the troubleshooting section on page 10.

fig. 7

IMPORTANT: Your steam mop needs water to make steam! Never use your steam mop without water in the tank.

Sweep or vacuum your floors prior to cleaning with your **Shark® Steam Lite Steam Mop.**

- 1 Pull and twist the quick release cord holder to unwrap the power cord completely. (**fig. 6**) Plug into an electrical outlet. The “**On**” light will turn blue. If the light does not turn on, reference the troubleshooting section on page 10. (**fig. 7**)



If your **Shark® Steam Light** Steam Mop stops steaming, it could be out of water. Unplug the power cord from the electrical outlet and refill the water tank at anytime.

2 Wait 30 seconds for the boiler to heat the water. Pump the handle a few times to prime the pump, activate steam and moisten the microfibre pad. (fig. 8)

3 Mop with a forward and backward motion to customise steam output automatically. (fig. 9)

⚠ IMPORTANT: Never leave the **Shark® Steam Lite** Steam Mop with a damp/wet microfibre pad on any floor surface for any amount of time as this may damage the floor.

Care of Your *Shark*® Steam Lite Steam Mop

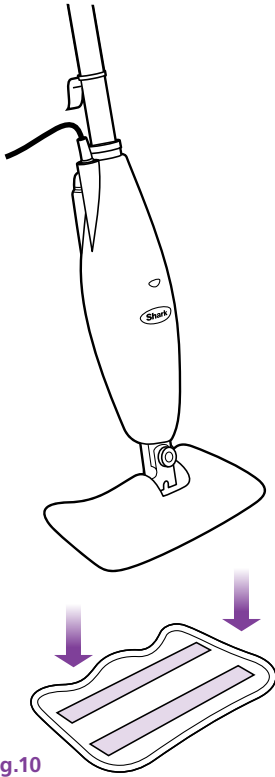


fig.10

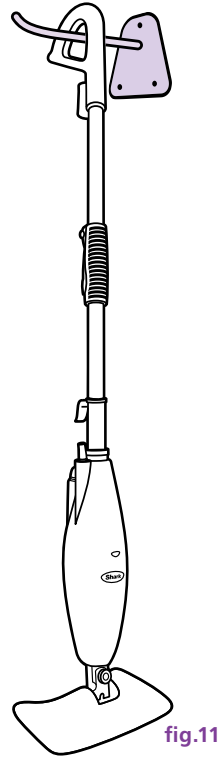


fig.11

AFTER USE AND STORAGE

- 1 When you have finished using the *Shark*® Steam Lite Steam Mop, unplug the cord from the outlet and place the mop into the upright position and let the unit cool for 3-5 minutes. Release steam by pumping the handle several times.
- 2 Carefully separate microfiber cleaning pad from steam mop, avoiding contact with the hot pad or dirt. (fig. 10)
- 3 Empty the water tank before storage. Remove the water tank cap and empty the tank over a sink. Replace the water cap.

- 4 To store the cooled *Shark*® Steam Lite Steam Mop, hang on a large hook. (fig. 11)

NOTE: If you want to store the *Shark*® Steam Lite Steam Mop standing upright, make sure it is leaning against a wall for added support and safety. Always store your *Shark*® Steam Lite Steam Mop with the microfiber cleaning pad removed. Store away from children and high traffic areas.

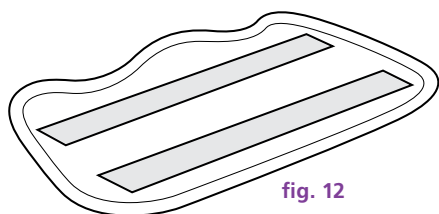


fig. 12

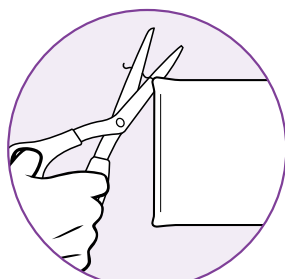
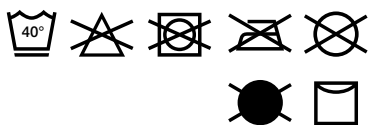


fig. 13

CARE OF YOUR MICROFIBRE CLEANING PAD

- 1 Wash pads in warm water. Wash separately from other laundry. Only use liquid detergent (no powder detergent). Do not use fabric softeners. Line dry or dry on a low dryer setting. (fig. 12)

- 2 If there are loose threads on the pad carefully cut the threads with scissors. Do not pull on them or cut at the base. (fig. 13)

! IMPORTANT: The microfibre cleaning pad may be very hot from the steam. Use caution when removing. Let the unit cool for 3-5 minutes first before removing.

Trouble Shooting

PROBLEM	POSSIBLE REASONS & SOLUTIONS
The Shark® Steam Lite Steam Mop will not turn-on.	Your steam-mop should be securely plugged into an electrical outlet only. Check your fuse or breaker.
Shark® Steam Lite Steam Mop will not make steam.	Is there water in the water tank? If not, add water to your steam mop following instructions on page 5.
Shark® Steam Lite Steam Mop leaves water on the floor.	Is your microfibre cleaning pad too wet? Unplug your steam mop and change the microfibre cleaning pad.
Shark® Steam Lite Steam Mop left white spot on the floor.	Do not leave your steam-mop on the floor with a damp or wet cleaning pad. Do you have hard water? If you do, you might want to switch to distilled water. Make sure the water tank cap is securely on the water tank.
Floors are cloudy, streaky or spotty after steaming.	The pad might be dirty, change the pad. If you washed the pocket with powder detergent, then the pad may have residual detergent left on it. Wash it again with liquid detergent. If you are cleaning in a kitchen area where there might be a build-up of grease, use a de-greasing agent such as an all-purpose cleaner or dish soap and paper towels to clean the area first. You might have left the mop in the same spot for too long. Do you have hard water? If you do, you might want to switch to distilled water. This might be leftover from past cleaners used on the floor surface. Use the steam mop a few more times and see if the leftover cloudiness is removed.
Shark® Steam Lite Steam Mop is hard to push.	Make sure the steam pad is attached correctly. Check to see if the cleaning pad is excessively dirty. Replace if the pad is too dirty or wet.



Notes



Notes



ONE (1) YEAR LIMITED REPLACEMENT WARRANTY STATEMENT

If your product becomes defective due to faulty material or workmanship within a period of 1 year from the date of purchase, we warrant to do the following:

- **For New Zealand Consumers:** We will replace the product with a new product, free of charge, or repair the product at our cost, at our discretion.
- **For Australian Consumers:** Our goods come with guarantees that cannot be excluded under the Australian Consumer Law. You are entitled to a replacement or refund for a major failure and for compensation for any other reasonably foreseeable loss or damage. You are also entitled to have the goods repaired or replaced if the goods fail to be of acceptable quality and the failure does not amount to a major failure.

Your warranty is subject to the following conditions:

- **DO NOT** operate the appliance with a damaged plug or cord, or if the unit has been dropped, damaged or dropped in water. To avoid the risk of electric shock, do not disassemble or attempt to repair the appliance on your own. If the supply cord is damaged, **it must be replaced by a qualified electrician in order to avoid a hazard.** Incorrect re-assembly or repair can cause a risk of electrical shock or injury to persons when the appliance is used.
- The product has not been misused, abused, neglected, altered, modified or repaired by anyone.
- The product has been subjected to fair wear and tear.
- The product has not been used for trade, professional or hire purposes.
- The product has not sustained damage through foreign objects, substances or accident.

Your warranty does not cover:

- Components that are subject to natural wear and tear caused by normal use in accordance with operating instructions.
- Unauthorised/improper maintenance/handling or overload is excluded from this warranty.
- For guarantee claims you will need to submit a proof of purchase in the form of a valid receipt that displays date and place of purchase.

This warranty does not replace but is in addition to your statutory rights.

This warranty does not apply to accessories supplied with the product.

This warranty applies only to the original purchaser and may not be transferred.

Replacement products will be covered by the limited warranty for the balance of the warranty period from the date of the original purchase.

Please note:

Only defective product or parts returned to place of purchase will be replaced under this warranty.

New Zealand Contact:

Brand Developers Limited
Unit H, 686 Rosebank Road,
Avondale 1026, Auckland, New Zealand
FAX: +64 9 306 8203
NZ Customer Care 0800 002 999

Australia Contact

Brand Developers Aust Pty Ltd
461 Plummer Street,
PORT MELBOURNE, VIC 3207
FAX: +61 3 9681 7825
AUST Customer Care: 1800 890 840

Distributed by:

Brand Developers Aust Pty Ltd

461 Plummer Street

PORT MELBOURNE, VIC 3207

FAX: +61 3 9681 7825

AUST Customer Care: 1800 890 840



Brand Developers Ltd

Unit H, 686 Rosebank Road,

Avondale, 1026 Auckland,

NEW ZEALAND

FAX: +64 9 306 8203

NZ Customer Care: 0800 002 999



Printed in China

Illustrations may differ from actual product.

S3251NZGN.E.131223.1

