

ozito

CORDLESS HEDGE/GRASS TRIMMER

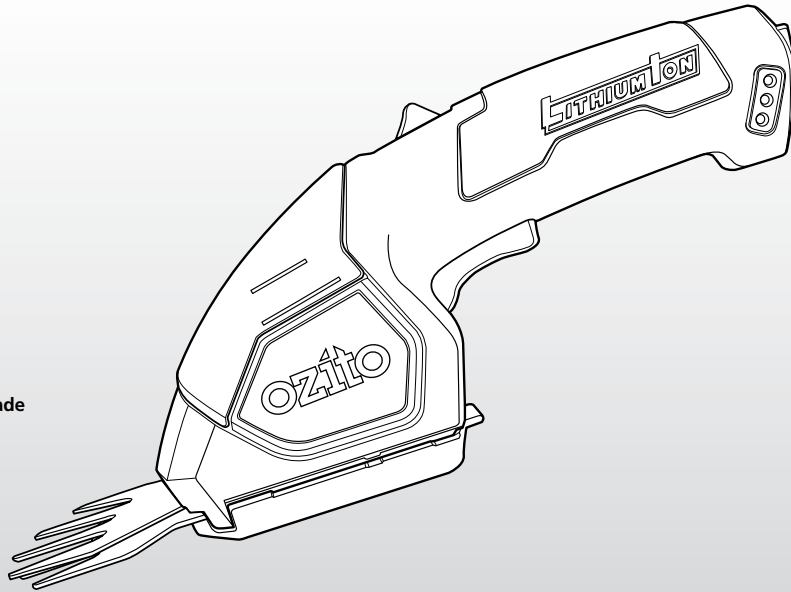
7.2V Lithium Ion

INSTRUCTION MANUAL

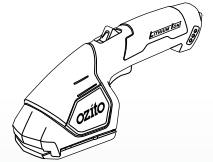
SPECIFICATIONS

Voltage:	7.2V
Battery:	1.3Ah Li-ion
Charge Time:	3 - 5 Hours
Hedge Trimmer:	150mm Blade
Grass Blade:	100mm x 74mm Blade
Max. Cutting Cap:	8mm
Weight:	0.75kg

ozito.com.au



WHAT'S IN THE BOX



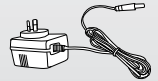
Hedge/Grass Trimmer



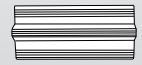
Hedge Trimmer Blade



Grass Shear Blade



AC Charging Adaptor



Hedge Blade Cover



Grass Shear Cover

3 YEAR REPLACEMENT WARRANTY

HTL-072

WARRANTY

IN ORDER TO MAKE A CLAIM UNDER THIS WARRANTY YOU MUST RETURN THE PRODUCT TO YOUR NEAREST BUNNINGS WAREHOUSE WITH YOUR BUNNINGS REGISTER RECEIPT. PRIOR TO RETURNING YOUR PRODUCT FOR WARRANTY PLEASE TELEPHONE OUR CUSTOMER SERVICE HELPLINE:

Australia 1800 069 486

New Zealand 0508 069 486

TO ENSURE A SPEEDY RESPONSE PLEASE HAVE THE MODEL NUMBER AND DATE OF PURCHASE AVAILABLE. A CUSTOMER SERVICE REPRESENTATIVE WILL TAKE YOUR CALL AND ANSWER ANY QUESTIONS YOU MAY HAVE RELATING TO THE WARRANTY POLICY OR PROCEDURE.

The benefits provided under this warranty are in addition to other rights and remedies which are available to you at law.

Our goods come with guarantees that cannot be excluded at law. You are entitled to a replacement or refund for a major failure and for compensation for any other reasonably foreseeable loss or damage. You are also entitled to have the goods repaired or replaced if the goods fail to be of acceptable quality and the failure does not amount to a major failure.

Generally you will be responsible for all costs associated with a claim under this warranty, however, where you have suffered any additional direct loss as a result of a defective product you may be able to claim such expenses by contacting our customer service helpline above.

3 YEAR REPLACEMENT WARRANTY

Your product is guaranteed for a period of **36 months from the original date of purchase**. If a product is defective it will be replaced in accordance with the terms of this warranty. Warranty excludes consumable parts, for example: blade, blade cover. Lithium Ion batteries are covered by a 12 month warranty.

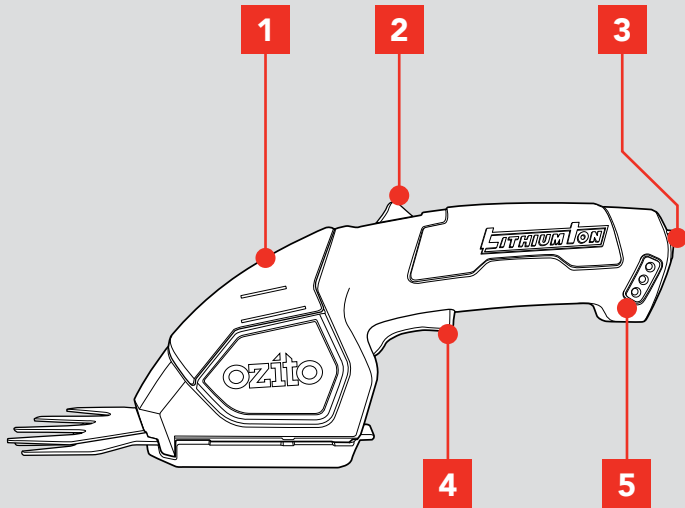
The following actions will result in the warranty being void.

- If the tool has been operated on a supply voltage other than that specified on the tool.
- If the tool shows signs of damage or defects caused by or resulting from abuse, accidents or alterations.
- Failure to perform maintenance as set out within the instruction manual.
- If the tool is disassembled or tampered with in any way.
- Professional, industrial or high frequency use.

KNOW YOUR PRODUCT

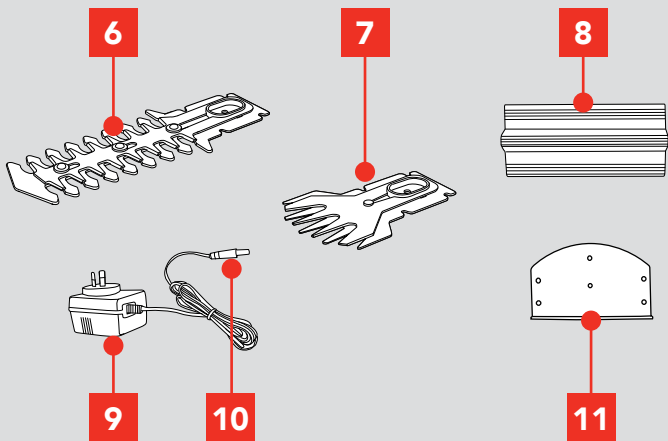
CORDLESS HEDGE/GRASS TRIMMER

- 1. Motor Housing
- 2. Safety Lock-Off Switch
- 3. Charger Socket
- 4. On/Off Trigger Switch
- 5. Charging LED



ACCESSORIES

- 6. Hedge Trimmer Blade
- 7. Grass Shear Blade
- 8. Hedge Blade Cover
- 9. Charging Adaptor
- 10. Charging Jack
- 11. Grass Shear Cover



ONLINE MANUAL

Scan this QR Code with your mobile device to take you to the online manual.



SETUP & PREPARATION

1. BATTERY CHARGING

Battery

The length of service between each charge will depend on the type of work you are doing. The battery in this Hedge/Grass Trimmer has been designed to provide maximum trouble free life. However, like all batteries, it will eventually wear out.

To obtain the longest possible battery life, we suggest the following:

- Store and charge your Hedge/Grass Trimmer in a cool area. Temperatures above or below normal room temperature will shorten battery life.
- Never store the Hedge/Grass Trimmer with the battery in a discharged condition. Recharge them immediately after they are discharged.
- All batteries gradually lose their charge. The higher the temperature the quicker they lose their charge. If you store your Hedge/Grass Trimmer for long periods of time without using it, recharge the battery every 6 months. This practice will prolong battery life.

The Hedge/Grass Trimmer has been shipped in a low charge condition and should be fully charged prior to use.

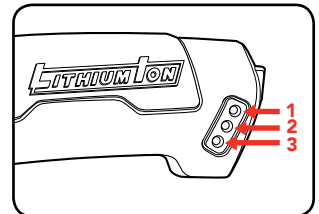
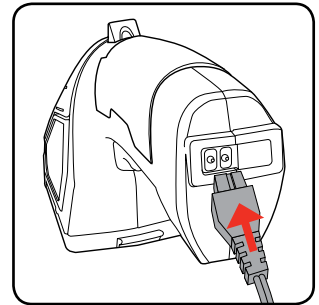
Plug the supplied charging adaptor into an appropriate AC power outlet. Connect the charging jack into the hedge/grass trimmer and switch on the mains power.

LED no.1 will illuminate red when charging. LEDs 2 & 3 will not be illuminated when charging.

The battery will take approximately 5 hours to charge. This may take up to 7 hours due to the level of charge left in the battery and the ambient temperature.

NOTE: The state of charge indicator LED will always be illuminated when the charger is plugged in and turned on.

The charge indicator indicates the charge of the Hedge/Grass Trimmer.



Condition	Colour of LED's	LED's Illuminated
Charging	Red	1- Red 2- Not illuminated 3- Not illuminated
Fully Charged	Green	1- Not illuminated 2- Green 3- Not illuminated
Low Charge	Yellow	1- Not illuminated 2- Not illuminated 3- Yellow

It is also normal for the handle of the Hedge/Grass Trimmer to heat when charging.

3 YEAR REPLACEMENT WARRANTY

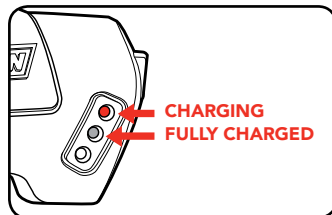
Initial Charge

Charge your battery for 5 – 7 hours then use it until it runs down and only slowly operates.

Recharge for 5 – 7 hours again.

CAUTION! THIS CHARGER DOES NOT AUTOMATICALLY TURN OFF WHEN THE BATTERY IS FULLY CHARGED. PLEASE TAKE CARE NOT TO LEAVE THE HEDGE/GRASS TRIMMER ON THE CHARGER TURNED ON. SWITCH OFF THE CHARGER AT THE MAINS WHEN CHARGING IS COMPLETE.

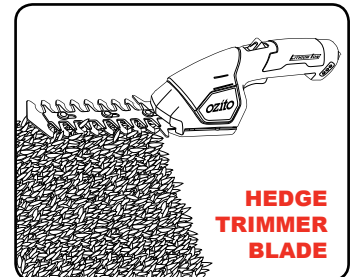
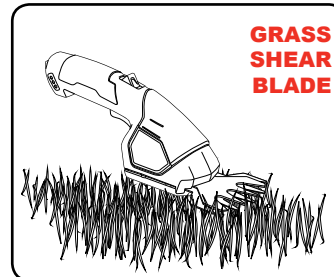
NOTE: The first charging LED will illuminate red when the charger is plugged in and charging the Hedge/Grass Trimmer. The LED will illuminate green on the middle LED when the Hedge/Grass Trimmer is fully charged.



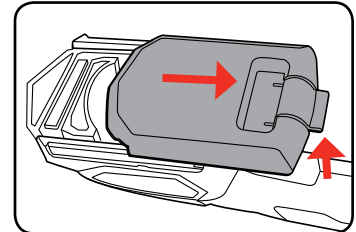
2. FITTING/CHANGING BLADES

Changing the blades

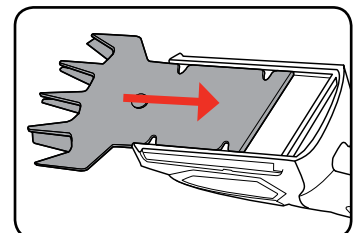
The Hedge/Grass Trimmer is equipped with two blades for all your gardening needs. The hedge trimmer blade is used to cut hedges and the grass shear blade is used to cut grass and hedges where finer detail is required.



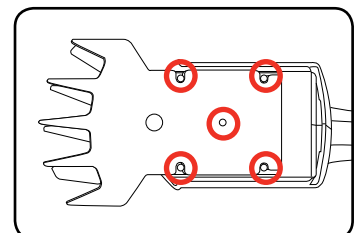
1. Turn the Hedge/Grass Trimmer upside down holding in one hand on a hard surface. Gently lift the tab of the blade cover and slide back until the cover can be removed.



2. Insert the desired blade into the base of the motor housing.



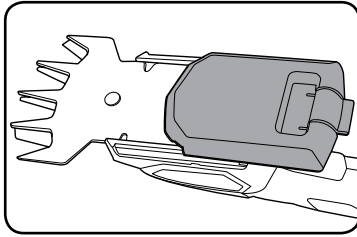
3. Align the 4 lugs for a secure fitment. The gearshaft in the middle of the blade also has to be aligned.



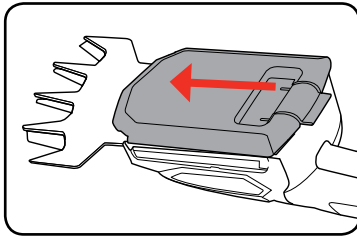
OPERATION

3. CUTTING TIPS

- Once the blade is in position, align the blade cover with the slots in the base of the motor housing.

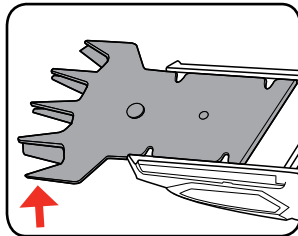
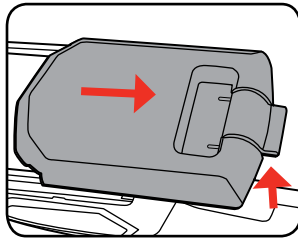


- Push forward until it clicks into place. The Hedge/Grass Trimmer is now ready for use.



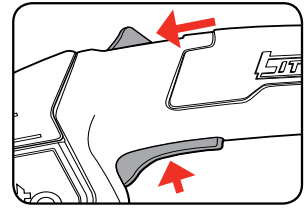
To remove a blade

- Turn the Hedge/Grass Trimmer upside down holding in one hand on a hard surface. Gently lift the tab of the blade cover and slide back until the blade cover can be removed.
- Remove the blade gently by lifting the end tip of the blade off the Hedge/Grass Trimmer unit.
- Follow steps 2 – 6 to secure the blade.



Initial Operation

- Push the safety lock-off switch forward, whilst holding the lock-off switch forward depress the on/off trigger to start operation. Once the trigger switch is engaged you can release the safety lock-off switch.



The safety lock-off switch reduces the risk of accidental starting.

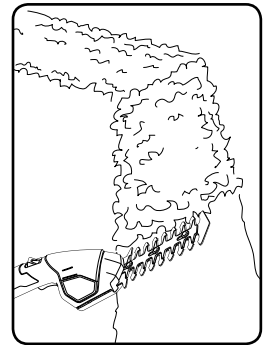
To stop the Hedge/grass Trimmer release the on/off trigger switch.

- Do not force the blades through dense growth. If the blades slow down, then reduce your pace. Should the blades jam, release the trigger immediately. Do not use fingers to free up jammed blades. Jammed blades can release suddenly causing serious injury.
- Never touch the blade rail while in operation and be aware of sharp edges even when the Hedge/Grass Trimmer is not in use.
- Always ensure you are securely balanced with a free work area before switching on the Hedge/Grass Trimmer.

NOTE: The yellow low charge indicator LED will be illuminated when the battery is running low and requires charging.

Shaping

The hedge should be trimmed to achieve a trapezoidal form, it should widen toward the bottom at both sides. This improves the penetration of light to the lower extremities. A general guideline is approximately 10cm slant for each 1 metre of hedge height.

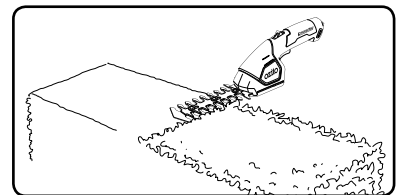


Cutting Sequence

First cut both sides, starting at the bottom and working to the top: this prevents cuttings from falling into the area where you are still to work.

Trimming the Top

Where the branches have grown extremely long, cut back the hedge in several stages. The shorter cuttings obtained are better suited for composting.



General Information

When older hedges are to be cut back a substantial amount, use pruning shears or some other device to trim thicker branches (greater than 8mm diameter) to the desired length before starting work with the hedge trimmer.

To shape precisely, run a taught line between the extreme edges of the hedge and then trim along the length of the line.

Ensure that the blade does not come into contact with any object made of hard material that could damage it, such as fencing wire or metallic plant supports.

MAINTENANCE

4. GENERAL MAINTENANCE

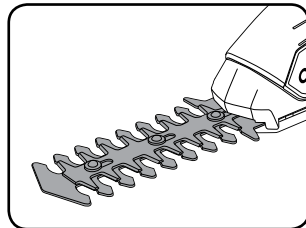
WARNING: ENSURE THE TOOL IS SWITCHED OFF BEFORE PERFORMING ANY OF THE FOLLOWING STEPS.

Maintenance

- Keep the ventilation vents of the tool clean at all times, if possible, prevent foreign matter from entering the vents.
- If the enclosure of the trimmer requires cleaning do not use solvents but a moist soft cloth. Never let any liquid get inside the tool: never immerse any part of the tool into a liquid.
- The blade rail should be cleaned and treated with light machine oil or spray lubricant (such as WD40, CRC 5.56 or RP7) after each use. When a job lasts for a longer period of time it is recommended that the blade rail also be treated with spray lubricant at regular intervals during operation.

Blade Cleaning

To ensure many years of efficient and trouble-free operation, blade cleaning should be performed if sap and debris have built-up, or if you live in an area where the soil is sandy. Cleaning unusually heavy deposits may require removal of the blades.



NOTE: Ozito Industries will not be responsible for any damage or injuries caused by repair of the trimmer by an unauthorised person or by mishandling of the trimmer.

DESCRIPTION OF SYMBOLS

V	Volts	Hz	Hertz
~	Alternating current	W	Watts
/min	Revolutions or reciprocation per minute	n _o	No load speed
dc	Direct current		Electrical Emissions Conformity (EMC)
∅	Diameter		Warning
	Read instructions		Indoor use only
mA	Milliamperes	RPM	Revolutions or reciprocation per minute
	Isolation transformer		Polarity
	Double insulated		Transformer Energy Rating (MEPS)
	Lithium Ion- battery		Thermal cut-out protection at 130°C

CARING FOR THE ENVIRONMENT

Our Environment

We at Ozito care about the environment and consider what we may do to protect it. If you share this concern you may already be aware of the suggestions below, if not please consider them as a small step in protecting our future.

Don't throw your clippings into a rubbish bin where it will be disposed of in landfill. You can dispose of the clippings on your compost heap, alternating them with other garden material. Alternatively many communities provide a public collection point where you can dispose of your garden waste in an environmentally friendly manner.



Power tools that are no longer usable should not be disposed of with household waste but in an environmentally friendly way. Please recycle where facilities exist. Check with your local council authority for recycling advice.



Recycling packaging reduces the need for landfill and raw materials. Reuse of recycled material decreases pollution in the environment. Please recycle packaging where facilities exist. Check with your local council authority for recycling advice.


SPARE PARTS

Limited spare parts are available subject to availability. Please contact your local Bunnings Special Orders Desk to order the required spare parts.

Most common spare parts listed below

Spare Part	Part No.
Switches	SPHTL072-17
Blade cover	SPHTL072-31
Charging adaptor	SPHTL072-40
Grass shear blade	SPHTL072-41
Hedge trimmer blade	SPHTL072-42

ELECTRICAL SAFETY

 **WARNING!** When using mains-powered tools, basic safety precautions, including the following, should always be followed to reduce risk of fire, electric shock, personal injury and material damage.

Read the whole manual carefully and make sure you know how to switch the tool off in an emergency, before operating the tool.

Save these instructions and other documents supplied with this tool for future reference.


The electric motor has been designed for 230V and 240V only. Always check that the power supply corresponds to the voltage on the rating plate.

Note: The supply of 230V and 240V on Ozito tools are interchangeable for Australia and New Zealand.



This tool's charger is double insulated in accordance with AS/NZS 60745-1; therefore no earth wire is required.

GENERAL POWER TOOL SAFETY WARNINGS

 **WARNING!** Read all safety warnings and all instructions. Failure to follow the warnings and instructions may result in electric shock, fire and/or serious injury. Save all warnings and instructions for future reference. The term "power tool" in the warnings refers to your mains-operated (corded) power tool or battery-operated (cordless) power tool.

1. Work area safety

- Keep work area clean and well lit.** Cluttered or dark areas invite accidents.
- Do not operate power tools in explosive atmospheres, such as in the presence of flammable liquids, gases or dust.** Power tools create sparks which may ignite the dust or fumes.
- Keep children and bystanders away while operating a power tool.** Distractions can cause you to lose control.

2. Electrical safety

- Power tool plugs must match the outlet. Never modify the plug in any way. Do not use any adapter plugs with earthed (grounded) power tools.** Unmodified plugs and matching outlets will reduce risk of electric shock.
- Avoid body contact with earthed or grounded surfaces, such as pipes, radiators, ranges and refrigerators.** There is an increased risk of electric shock if your body is earthed or grounded.
- Do not expose power tools to rain or wet conditions.** Water entering a power tool will increase the risk of electric shock.
- Do not abuse the cord. Never use the cord for carrying, pulling or unplugging the power tool. Keep cord away from heat, oil, sharp edges or moving parts.** Damaged or entangled cords increase the risk of electric shock.
- When operating a power tool outdoors, use an extension cord suitable for outdoor use.** Use of a cord suitable for outdoor use reduces the risk of electric shock.
- If operating a power tool in a damp location is unavoidable, use a residual current device (RCD) protected supply.** Use of an RCD reduces the risk of electric shock.

3. Personal safety

- Stay alert, watch what you are doing and use common sense when operating a power tool. Do not use a power tool while you are tired or under the influence of drugs, alcohol or medication.**
A moment of inattention while operating power tools may result in serious personal injury.
- Use personal protective equipment. Always wear eye protection.** Protective equipment such as dust mask, non-skid safety shoes, hard hat, or hearing protection used for appropriate conditions will reduce personal injuries.
- Prevent unintentional starting. Ensure the switch is in the off-position before connecting to power source and/or battery pack, picking up or carrying the tool.** Carrying power tools with your finger on the switch or energising power tools that have the switch on invites accidents.
- Remove any adjusting key or wrench before turning the power tool on.**
A wrench or a key left attached to a rotating part of the power tool may result in personal injury.
- Do not overreach. Keep proper footing and balance at all times.** This enables better control of the power tool in unexpected situations.

If the supply cord is damaged, it must be replaced by an electrician or a power tool repairer in order to avoid a hazard.

Note: Double insulation does not take the place of normal safety precautions when operating this tool. The insulation system is for added protection against injury resulting from a possible electrical insulation failure within the tool.

Using an Extension Lead

Always use an approved extension lead suitable for the power input of this tool. Before use, inspect the extension lead for signs of damage, wear and ageing. Replace the extension lead if damaged or defective. When using an extension lead on a reel, always unwind the lead completely. Use of an extension lead not suitable for the power input of the tool or which is damaged or defective may result in a risk of fire and electric shock.


To reduce the risk of electric shock, we recommend the use of a residual current device (rated 30mA or less).

- Dress properly. Do not wear loose clothing or jewellery. Keep your hair, clothing and gloves away from moving parts.** Loose clothes, jewellery or long hair can be caught in moving parts.
- If devices are provided for the connection of dust extraction and collection facilities, ensure these are connected and properly used.** Use of dust collection can reduce dust-related hazards.
- Power tool use and care**
 - Do not force the power tool. Use the correct power tool for your application.** The correct power tool will do the job better and safer at the rate for which it was designed.
 - Do not use the power tool if the switch does not turn it on and off.** Any power tool that cannot be controlled with the switch is dangerous and must be repaired.
 - Disconnect the plug from the power source and/or the battery pack from the power tool before making any adjustments, changing accessories, or storing power tools.** Such preventive safety measures reduce the risk of starting the power tool accidentally.
 - Store idle power tools out of the reach of children and do not allow persons unfamiliar with the power tool or these instructions to operate the power tool.** Power tools are dangerous in the hands of untrained users.
 - Maintain power tools. Check for misalignment or binding of moving parts, breakage of parts and any other condition that may affect the power tool's operation. If damaged, have the power tool repaired before use.** Many accidents are caused by poorly maintained power tools.
 - Keep cutting tools sharp and clean.** Properly maintained cutting tools with sharp cutting edges are less likely to bind and are easier to control.
 - Use the power tool, accessories and tool bits etc. in accordance with these instructions, taking into account the working conditions and the work to be performed.** Use of the power tool for operations different from those intended could result in a hazardous situation.
- Battery tool use and care**
 - Recharge only with the charger specified by the manufacturer.** A charger that is suitable for one type of battery pack may create a risk of fire when used with another battery pack.
 - Use power tools only with specifically designated battery packs.** Use of any other battery packs may create a risk of injury and fire.
 - When battery pack is not in use, keep it away from other metal objects, like paper clips, coins, keys, nails, screws or other small metal objects, that can make a connection from one terminal to another.** Shorting the battery terminals together may cause burns or a fire.
 - Under abusive conditions, liquid may be ejected from the battery; avoid contact.** If contact accidentally occurs, flush with water. If liquid contacts eyes, additionally seek medical help. Liquid ejected from the battery may cause irritation or burns.
- Service**
 - Have your power tool serviced by a qualified repair person using only identical replacement parts.** This will ensure that the safety of the power tool is maintained.
 - If the supply cord is damaged, it must be replaced by the manufacturer, its service agent or similarly qualified persons in order to avoid a hazard.**

BATTERY SAFETY WARNINGS

THIS MANUAL CONTAINS IMPORTANT SAFETY AND OPERATING INSTRUCTIONS FOR YOUR CHARGER & BATTERY.

- Before using the charging adaptor, thoroughly read all instructions and cautionary, markings on charger and hedge/grass trimmer.

 **DANGER!** If the hedge/grass trimmer housing is cracked or damaged, do not insert the charge adaptor plug into the charger socket. There is a danger of electric shock or electrocution.

- This charger is not intended for any uses other than charging rechargeable batteries. Any other use may result in risk of fire, electric shock or electrocution.
- Do not place any object on top of the charger or place the charger on a soft surface that may result in excessive internal heat. Place the charger in a position away from any heat source.
- To reduce risk of damage to the electric plug and cord, pull by the plug rather than the cord when disconnecting the charger.
- Make sure cord is located so that it will not be stepped on, tripped over, or otherwise subjected to damage or stress.
- An extension cord should not be used unless absolutely necessary. Use of an improper extension cord could result in the risk of fire, electric shock or electrocution.
- Do not operate charger if it has received a sharp blow, been dropped or otherwise damaged


in any way. Have it checked by an electrician or power tool repairer.

- Do not disassemble charger. Take it to an electrician or power tool repairer when service or repair is required. Incorrect reassembling may result in a risk of electric shock, electrocution or fire.
- To reduce risk of electric shock, unplug charger from the outlet before attempting any cleaning.
- Never attempt to connect 2 chargers together.
- DO NOT store or use the tool and battery pack in locations where the temperature may reach or exceed 40°C (such as outside sheds or metal buildings in summer).
- The charger is designed to operate on standard household electrical power (240 volts). Do not attempt to use it on any other voltage!

The integrated battery is not fully charged out of the carton. Read the safety instructions and then follow the charging notes and procedures.

- The longest life and best performance can be obtained if the integrated battery is charged when the air temperature is between 18 - 24°C. Do not charge the battery pack in an air temperature below 10°C or above 40°C. This is important and will prevent damage to the battery pack.
- Do not incinerate the integrated battery even if it is seriously damaged or is completely worn out. The battery can explode in a fire.

ADDITIONAL SAFETY INSTRUCTIONS FOR HEDGE TRIMMERS

 **WARNING!** A battery operated tool with individual batteries or a separate battery pack must be recharged only with the specific charging unit for the battery. A charging unit that may be suitable for one type of battery may create a risk of fire when used with another battery type.

- Avoid accidental starting.
- When the tool is not in use keep it away from other metal objects.

Read the whole manual carefully and make sure you know how to switch the tool OFF, in an

emergency, before operating the tool.

Save these instructions and other documents supplied with this machine for future reference.

Lithium Ion Hedge Trimmer Safety Warnings: This appliance is not intended for use by persons (including children) with reduced physical, sensory or mental capabilities, or lack of experience and knowledge, unless they have been given supervision or instruction concerning use of the appliance by a person responsible for their safety.