



Piranha Vacuum Cleaner

For Household Use Only



Model No.: YLC93-200
Item No.: 900147
Rev 1

Note: The specifications and/or components of this appliance are subject to change without prior notice.

If the Hose, Floor Head or any Accessories should fail during use, please call 1800 079 124 for an immediate replacement. This will save you from returning the product to the store.

If we can assist you in any other way, please feel free to contact us

1	Warnings	3
2	Safety Direction	3
3	Transporting your Vacuum	6
4	Schematic Wiring Diagram	6
5	Components	7
6	Assembly Method	8
6.1	Fitting Flexible Hose	8
6.2	Hose Removal	8
6.3	Fitting Telescopic Tube and Accessories	8
6.5	Tools	9
7	Power and Power Cord	9
8	Suction Relief Slide	10
9	Floor Head	10
10	Safety Devices Operation	11
11	Emptying the Dust Canister	11
12	User Maintenance	12
12.1	Cleaning Filters	12
12.1.1	Main Filters	12
12.1.2	Exhaust Air Filter	13
12.2	Cleaning the Vacuum Cleaner Body and Tools	14
13	Troubleshooting	15
14	Guarantee	16

1 Warnings

Before using this appliance, read and follow all warnings and instructions in this manual, even if you are familiar with this product.

This appliance is not intended for use by persons (including children) with reduced physical, sensory or mental capabilities, or lack of experience and knowledge, unless they have been given supervision or instruction concerning use of the appliance by a person responsible for their safety.

Young children should be supervised to ensure that they do not play with the appliance.

2 Safety Direction

Please read this instruction manual carefully before first use. It is advisable to keep this instruction manual for future reference.

DO NOT vacuum water, wet objects, liquids, ashes, hot coals, cigarette butts, matches or any hot, smoking or burning objects, etc.

DO NOT pick up flammable or combustible materials (i.e. lighter fluid, petrol, kerosene, etc.) or use in the presence of explosive liquids or vapour.

DO NOT pick up toxic material (i.e. chlorine bleach, ammonia, drain cleaner, etc.)

DO NOT vacuum Toner (for laser printer, copy machines etc) as there is a risk of fire and explosion.

DO NOT vacuum plaster, cement etc. as the filter can become blocked.

DO NOT use the vacuum without all the filters fitted.

DO NOT store or use the appliance near high temperature areas.

DO NOT run over the power cord with the vacuum cleaner.

DO NOT use the vacuum cleaner if it is blocked. Turn off and clear all blockages before continuing.

DO NOT use the vacuum cleaner with blocked filters. Clean filters before continuing. (refer to User Maintenance section).

DO NOT use the vacuum cleaner if the appliance malfunctions, abnormal noise, smell, smoke, is dropped or damaged in any manner or any breakage is found during operation.

Return appliance to the nearest authorised service agent or similarly qualified person for a thorough examination, repair, electrical or mechanical adjustment.

DO NOT misuse the cord. Never pull the appliance by the cord or pull to disconnect it from the outlet. Instead, grasp the plug and pull to disconnect.

DO NOT use the vacuum cleaner to pick up large objects, hard or sharp objects such as glass, nails, screws, coins, etc. that are likely to cause damage.

DO NOT use with damaged cord or plug.

DO NOT use vacuum cleaner if it has been dropped, damaged, left outdoors, or dropped into liquid (water etc.)

DO NOT close door on cord, or pull cord around sharp edges or corners.

Cord Rewind - **DO NOT** allow the cord and plug to whip back at full speed. Guide the cord and plug in gently.

DO NOT handle plug or vacuum cleaner with wet hands.

DO NOT put any objects into openings.

DO NOT use with any openings blocked and do not restrict airflow.

DO NOT operate the appliance with a damaged cord or plug.

If the supply cord is damaged, it must be replaced by the manufacturer, its service agent or similarly qualified persons in order to avoid a hazard.

DO NOT use without filters in place.

DO NOT attempt to modify this product in any way.

DO empty the Dust Canister regularly for optimal operation of the vacuum.

DO keep hair, loose clothing, fingers, feet and body parts away from openings or moving parts.

DO disconnect the appliance from the mains supply before connecting the flexible suction hose.

DO turn off controls before you connect or disconnect the appliance to or from the mains supply.

DO disconnect the appliance from the power supply when not in use, before changing the dust filter, cleaning the filters or connecting / disconnecting the accessories.

DO use only on dry, indoor surfaces.

DO use only as described in this manual. Use only manufacturer's recommended attachments.

DO Keep cord away from heated surfaces.

DO Keep all openings free of dust, lint, hair, and anything that may reduce airflow.

DO use extra care when vacuuming on stairs.

DO keep your work area well lit.

DO store your appliance indoors in a cool, dry area.

DO ensure children and babies cannot play with plastic bags or any packaging materials.

DO operate the appliance from a power source of the same voltage, frequency and rating as indicated on the product identification plate

If this appliance is used by a third party, **DO** supply the instruction manual with it.

No liability can be accepted for any damage caused by non-compliance with these instructions or any other improper use or mishandling of appliance.

This product has not been designed for any uses other than those specified in this manual.

ONLY for domestic use. Industrial or commercial use invalidates the warranty.

Read and Save These Instructions

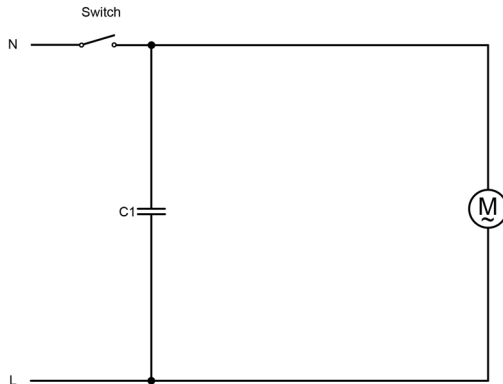
3 Transporting your Vacuum

To move your vacuum cleaner from room to room, unplug the unit and carry using the carry handle.

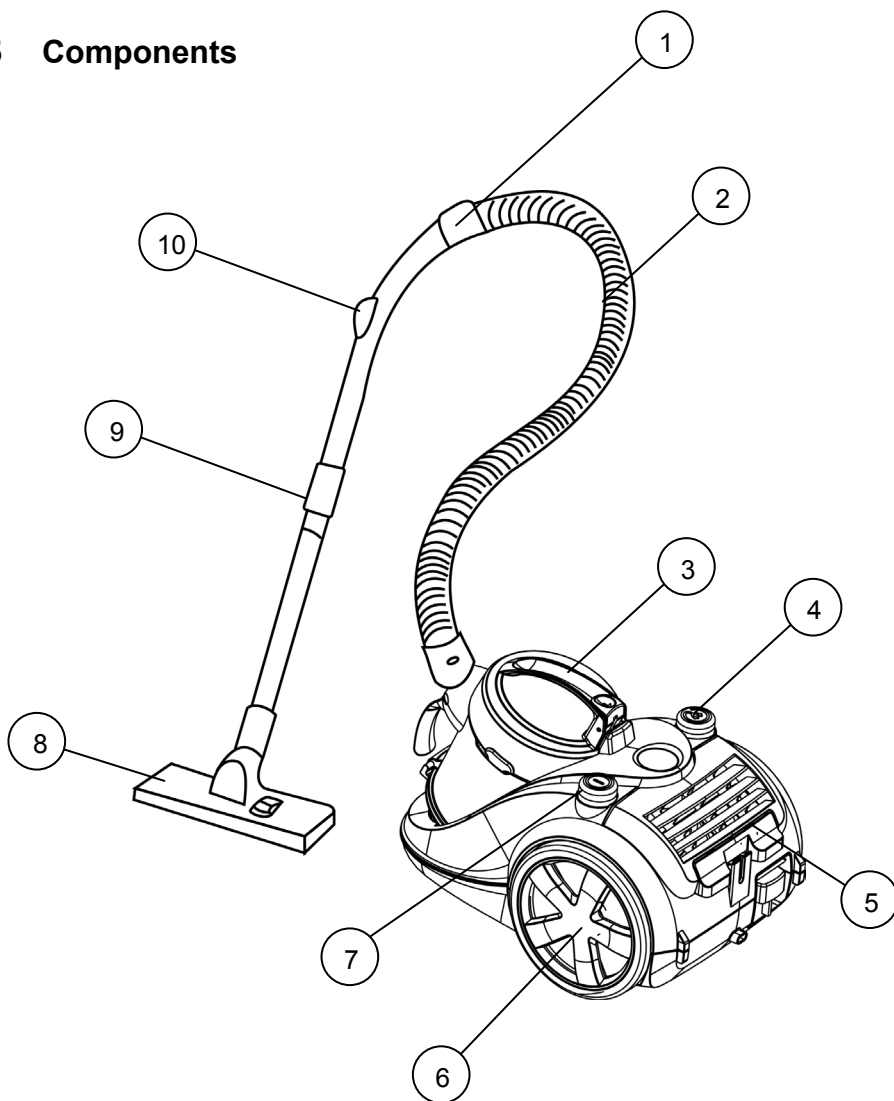
Never pull or carry the vacuum cleaner by its cord.

Never carry the vacuum cleaner by the flexible hose.

4 Schematic Wiring Diagram



5 Components



1	Handle	6	Wheel
2	Hose	7	Power On – Off Button
3	Dust Canister with Handle	8	Floor Head
4	Cord Rewind Button	9	Tube
5	Rear Exhaust Grille	10	Suction Strength Control Slide

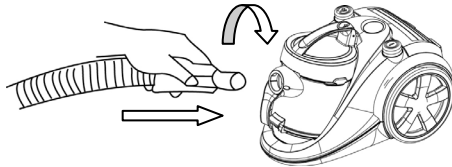
6 Assembly Method

Please Note: Always remove the plug from the power socket before fitting or removing accessories.

Ensure all Filters are fitted, and fitted correctly before using.

6.1 Fitting Flexible Hose

Insert the coupling end of the vacuum cleaner hose all the way into the Hose Connector hole and rotate clockwise until it locks into place.

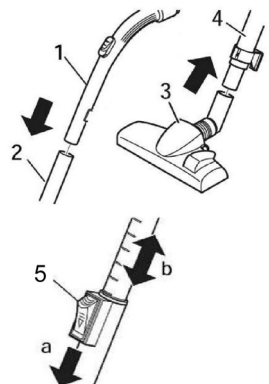


6.2 Hose Removal

To remove the flexible hose from the vacuum cleaner, grasp and rotate the hose coupling anticlockwise and then pull the coupling straight out.

6.3 Fitting Telescopic Tube and Accessories

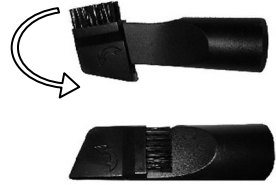
- Insert the hose handle (1) into the upper end of the telescopic tube (2).
- Insert the lower end of the telescopic tube (4) into the Floor Head (3).
- To adjust the length of the telescopic tube, press the telescopic tube lock button (5) down, and then pull the handle and tube out to the desired length.



6.5 Tools

The Crevice tool is used for cleaning down the side of sofas and into corners, etc.

The Crevice tool with brush is used for cleaning grilles and vents, etc.



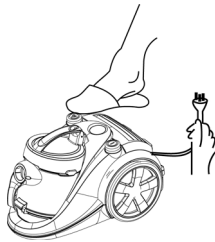
7 Power and Power Cord

- Before using the appliance, pull to unwind the cord fully up to the yellow mark and insert the plug into the power supply.

The yellow mark on the cord shows the ideal cord length.

- Do not extend the cord past the red mark.

Note: To rewind the cord, press the Cord Rewind Button whilst controlling the cord with the other hand to ensure that it does not whip back causing damage to your person or surroundings.



- Press the On / Off button to start the motor.



8 Suction Relief Slide

The Suction Relief Valve is used for easy, temporary reduction of the vacuum cleaner suction at the floor head.

Slide the Suction Control Slide to the open position to reduce the suction power and then slide close to revert back to full suction power at the floor head.



9 Floor Head

The floor head is adjustable to suit either hard floors or carpets.

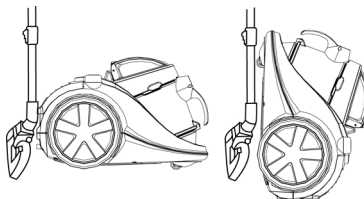
The floor head has two settings. When cleaning hard surfaces (parquet flooring, tiles, etc.), the floor head brushes should be extended.

When cleaning carpets and rugs, the brushes should be retracted into the floor head.

Press the brush change button to switch between the two settings.



Note: If, during vacuuming, you need to pause to move furniture etc., you can place the floor head in the parking holder using the hook on the back of the floor head.



10 Safety Devices Operation

NOTE: The motor has an overheating protection device built in.

It will automatically switch off power to the motor if it overheats. e.g. from blocked nozzles, full dust Canister or uncleaned blocked filters.

If this happens, turn off the vacuum and unplug from power socket, clean blockage and / or filters and allow to rest for at least 60 minutes which should be enough time for the motor to cool down.

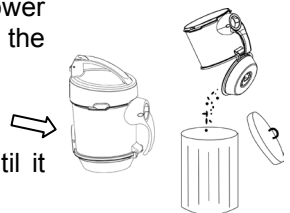
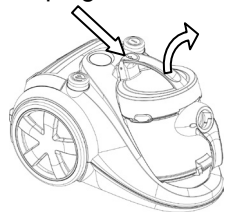
Important: If the over-temperature device activates and turns the motor off, and you do not switch off and unplug the appliance from the power point, the motor will restart automatically after it has cooled down enough to reset the safety device.

NOTE: NEVER BLOCK ANY VENTS OR OPENINGS.

11 Emptying the Dust Canister

Empty the Dust Canister as frequently as possible or when the suction power is reduced.

- To remove the Dust Canister, turn off the power and unplug.
- Grip the handle on the Dust Canister, press the Dust Canister Release Button and pull the Dust Canister forward and out of the housing.
- Take the dust container to a dustbin.
- Press the Trap Door release button on the lower part and the trap door will open emptying the contents into the bin.



- To close the trap door, close it manually until it clips shut.
- Brush the inside of the dust canister with a small brush or wash. Refer to section “Cleaning Filters”.
- To refit the Dust Canister in to the vacuum cleaner, simply align the dust canister into its position and push down until it locks in place.

12 User Maintenance

WARNING: The plug must be removed from the power socket before any maintenance or replacement.

NOTE: To maximise the performance of your vacuum cleaner, you should clean your filters regularly.

If the filters are broken or worn, replace them before continuing to use the vacuum.

Filters can be purchased from our Customer Service. You can call our customer service toll free number: 1800 079 124 or via email info@hegroup.com.au

12.1 Cleaning Filters

Important Note – the Filters must be cleaned regularly for best suction performance and to prevent over-heating and damage to your vacuum cleaner.

Cleaning is best done at the same time when emptying the dust Canister after you have finish vacuuming for the day.

NOTE: Never use the vacuum cleaner with wet or damp filters or without ALL filters fitted.

Using wet or damp filters will damage the filters, may cause serious damage to the vacuum cleaner and will void your warranty.

12.1.1 Main Filters

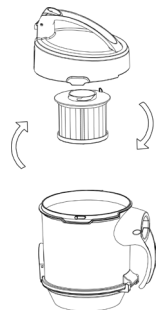
Remove the hose coupling then remove the Dust Canister as described previously.

The Filter is located inside the Dust Canister.

Open the lid of the dust canister by unscrewing it clockwise and lift the lid off.

Remove the filter by also unscrewing it from the lid.

Remove the filter mesh and wash both the filter and filter mesh in warm mild soapy water, rinse in clean fresh cold water and let fully dry.



Note: Only clean the filter if it is very dirty.

DO NOT scrub the filters or place in a dishwasher.

DO NOT use a hair drier to dry the filters.

NOTE: Never use the vacuum cleaner with wet or damp filters. Using wet or damp filters will damage the filters, may cause serious damage to the vacuum cleaner and will void your warranty.

Place the Filter Mesh to the filter and refit the Filter (or replace with new ones) by screwing it back to the underside of the dust canister lid, attach the lid to the dust canister and screw shut, then place the dust canister back into the vacuum cleaner and push in until it locked in place.

12.1.2 Exhaust Air Filter

The exhaust air filter cleans the air a final time before it leaves the vacuum cleaner.

You can access and clean the exhaust air filter as follows: (this is located at the rear of the vacuum cleaner)



Unclip and pull open the Rear Exhaust Air Grille.

Remove the foam Filter then Wash in warm mild soapy water, rinse in clean fresh cold water and let fully dry before refitting.

DO NOT scrub the filter or place in a dishwasher.

DO NOT use a hair drier to dry the filter.

NOTE: Never use the vacuum cleaner with wet or damp filters. Using wet or damp filters will damage the filters, may cause serious damage to the vacuum cleaner and will void your warranty.

Refit the Filter (or replace with a new one) and refit the Rear Exhaust Air Grille.

Do Not place components in a dishwasher.

12.2 Cleaning the Vacuum Cleaner Body and Tools

Do not clean the vacuum cleaner, components or accessories using petrol or any other flammable liquid or solvents, etc.

Clean only the outside of the vacuum cleaner.

Use only a moist cloth and mild detergent for cleaning the vacuum cleaner, components and accessories.

After cleaning, wipe off the moisture on vacuum cleaner, components and accessories with a dry cloth.

Do Not place accessories and components in a dishwasher.

13 Troubleshooting

Noisy operation	Clean the Filters and empty the Dust Canister
	Check for partial blockages and unblock.
Suction Not Strong	<p>Clean the Filters and empty the Dust Canister.</p> <p>Check for blockages and unblock</p> <p>Check that the Suction Relief Valve on the hose handle is closed.</p>
Over-heating / Stopping	Clean the Filters, empty the Dust Canister, check for blockages and unblock then allow it to cool for up to hour before trying to restart.
Floor Brush hard to push	<p>Due to the strong suction of your vacuum cleaner, it may be difficult to push, especially over thick carpet. Rather than force the Floor Brush, lift the Floor Brush momentarily to allow air to flow into the vacuum releasing the built up suction pressure, then continue vacuuming.</p> <p>The Floor Head brush may be extended when using on a carpet. Retract the brush.</p> <p>Slide open the vacuum Suction Relief Valve located on the hose handle. This will reduce suction to the floor head.</p>

14 Guarantee

WHAT'S COVERED?

- 1.1 H.E. Group Pty Ltd ("us" "we" or "our") warrants this good for a full replacement or refund for a period of twelve months from the date of purchase.
- 1.2 This warranty covers materials and workmanship defects only.

WHAT IS NOT COVERED?

- 2.1 This good is for household use only and if used in any way other than as detailed in the instruction manual will void this warranty.
- 2.2 This warranty does not apply to defects arising from abuse, alteration, unauthorised or unreasonable use of the good, nor does it cover general deterioration due to usage.
- 2.3 This warranty does not apply to accessories due to general deterioration or acts beyond human control.

WHAT WE WILL DO

- 3.1 We will replace the good or provide a refund to the value of the purchase price, if a defect is discovered in the good during the warranty period of twelve months subject to verification of defect or malfunction and the date and proof of purchase and purchase price.

WARRANTY COSTS

- 4.1 Once we have received the goods and you have complied with the warranty, our costs associated with the warranty claim will be borne by us.
- 4.2 No responsibility will be taken for goods lost, mislaid or damaged whilst in transit.

GENERAL

The benefits of this warranty are additional to any other rights and remedies you may have under law.

- 5.1 Our goods come with guarantees that cannot be excluded under Australian Consumer Law. You are entitled to a replacement or refund for a major failure and compensation for any other reasonably foreseeable loss or damage. You are also entitled to have the goods repaired or replaced if the goods fail to be of acceptable quality and the failure does not amount to a major failure.
- 5.2 Notwithstanding 5.1, except as provided for in this warranty, all express and implied warranties and conditions under statute or general law as to the merchantability, description, quality, suitability or fitness of the goods for any purpose, or as to design, assembly, installation, materials or workmanship or otherwise are (where permitted under law) expressly excluded.
- 5.3 To the extent permitted by law, our total liability for loss or damage of every kind related to the good in any way whatsoever is limited to the amount paid to the retailer by you for the good or the value of the good.
- 5.4 These terms and conditions supersede and exclude all prior and other discussions, representations (contractual or otherwise) and arrangements relating to the supply of the goods or any part of the goods. This includes representations not made by us relating to the performance of the goods or any part of the goods or the results that ought to be expected from using the good.

CUSTOMER CARE

- 6.1 **To claim under this warranty, you must first contact our friendly customer service team on free call 1800 079 124 or via email info@hegroup.com.au and explain the basis of your claim. Our customer service team will then provide you with directions on how to make your claim under this warranty.**

This warranty is valid with the presentation of the original proof of purchase receipt or tax invoice originating from the store of purchase for the product showing the retailer's name, date of purchase and amount paid, by you, for the good.