



POPE

Lawn Mower

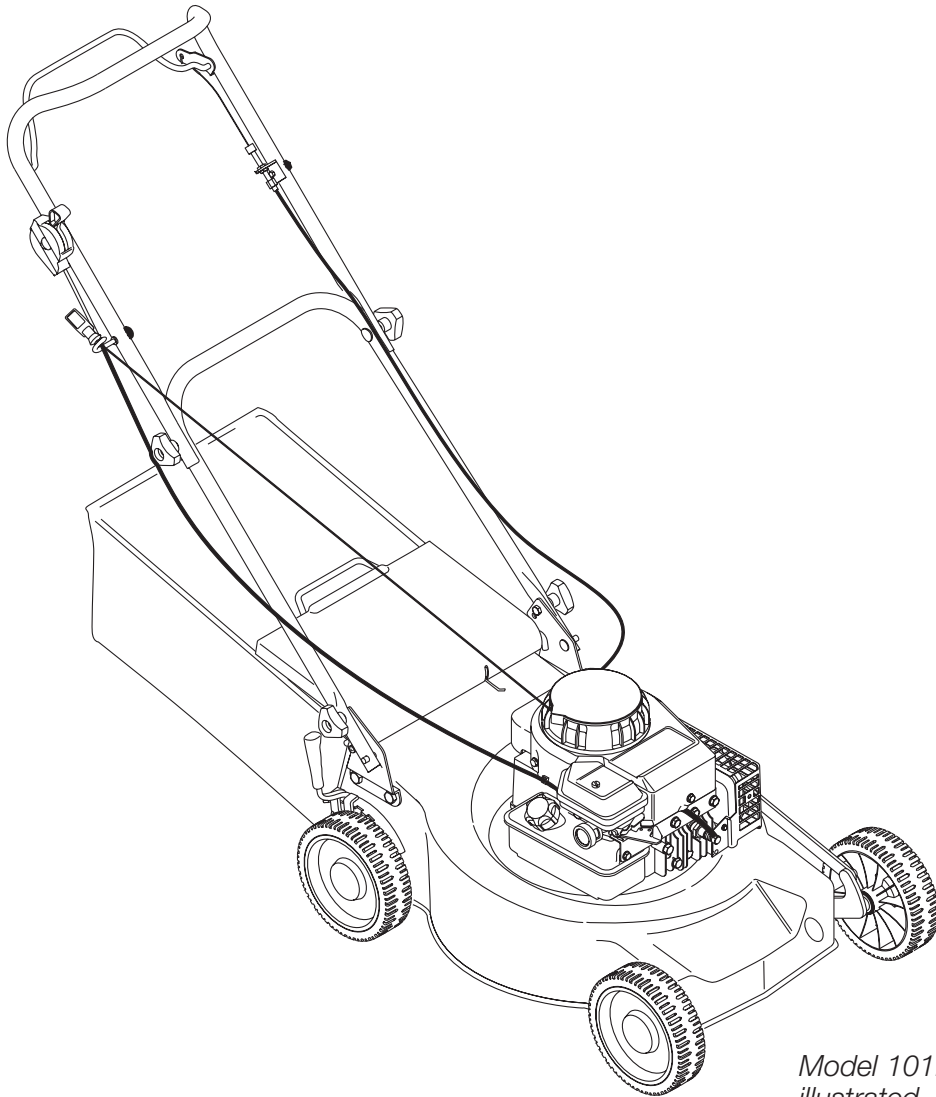
Model Numbers:

101PM2375 Serial No. 8400001 and up

101PM45 Serial No. 54500001 and up

101SPM45 Serial No. 55500001 and up

101PM450 Serial No. 94500001 and up



*Model 101PM2375
illustrated*

Operator's Manual

Table of Contents

Introduction	3
Safety	3
Product Overview	4
Walk Behind Mowers	4
Self Propelled Mowers	4
Safety Instructions	5
Slope Operation	5
Children	5
Safety Decals	6
Assembly	7
Operating Tips	8
Folding the Handle	8
Adjusting Cutting Height	8
Before Operating	9
Filling the Engine with Oil	9
Filling the Fuel Tank	9
Operation	10
Starting the Engine	10
Stopping the Engine	10
Using the Auto-Drive System	11
Mowing	11
Maintenance	12
Preparing for Maintenance	12
Replacing the Blade	12
Checking the Engine Oil Level	12
Air Cleaner	13
Changing the Blade	13
Cleaning the Mower	13
Storage	13
Preparing the Mower for Storage	13
Removing the Mower from Storage	13
Spare Parts	14
The Pope Guarantee	15
Authorised Pope Service Dealers	16

Introduction

Introduction

Read this manual carefully to learn how to operate and maintain your product properly and to avoid injury and product damage. You are responsible for operating the product properly and safely.

You may contact Pope directly on 1300 134 880 for product and accessory information or help finding a dealer. A list of our dealers is located in the back of this manual.

Whenever you need service, genuine parts, or additional information, contact the authorised service dealer or customer service and have the model and serial number of your product ready.

This manual applies to Pope Mowers with the following Model numbers:

101PM35
101PM2375
101PM45
101SPM45
101PM450

This manual uses illustrations of the mower, with model number 101PM2375.



Warning



This manual identifies potential hazards and has safety messages identified by the following words:

- **Danger** signals an extreme hazard that will cause serious injury or death if you do not follow the recommended precautions.
- **Warning** signals a hazard that may cause serious injury or death if you do not follow the recommended precautions
- **Caution** signals a hazard that may cause minor or moderate injury if you do not follow the recommended precautions.

This manual uses two other words to highlight information. **Important:** calls attention to special mechanical information and **Note:** emphasises general information worthy of special attention.

Safety

Read and understand the contents of this manual before the engine is ever started.



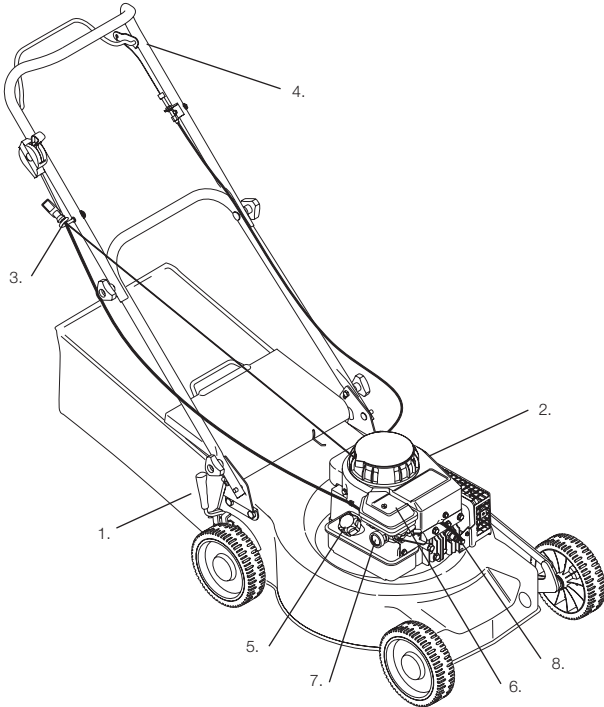
This is the safety alert symbol. It is used to alert you to potential personal injury hazards. Obey all safety messages that follow this symbol to avoid possible injury or death.

Improperly using or maintaining this mower could result in injury or death.

Product Overview

Walk Behind Mowers

(Models 101PM35, 101PM2375, 101PM45 and 101PM450)



1. Cutting height lever
2. Oil fill/Dipstick
3. Recoil start handle
4. Safety stop lever
5. Fuel tank cap
6. Air filter
7. Primer
8. Spark plug

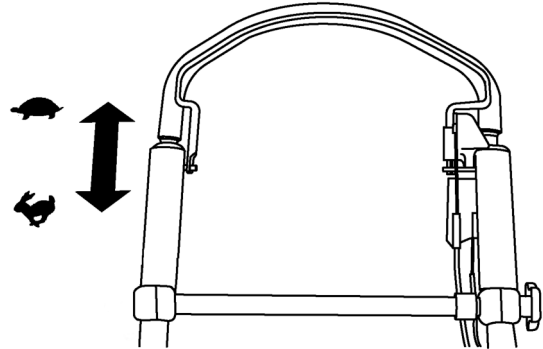
Note: The handle assembly as shown above is for the mowers 101PM35, 101PM2375, 101PM45 and 101PM450.

It does not represent the handle for the Auto Drive Mower (101SPM45).

Self Propelled Mower

(Model 101SPM45)

The Pope Auto Drive Lawn Mower (Model 101SPM45) has the same features as the walk behind mowers, with the exception of the handle. This model (101SPM45) features an Auto Drive handle as shown below. It also has a gear drive mechanism, housed under the mower deck.



The unique Auto Drive feature allows you to walk with the mower at your own pace, rather than push the mower. The Auto Drive mechanism allows infinite speed control and can keep pace with you – up to 8 km/hr.

Note: This mower does not have a throttle control.

Write the Model and serial number in the space provided below. This will be useful when ordering spare parts for your Pope mower.

Model no.

Serial no.

Safety Instructions



Warning



Exhaust contains carbon monoxide, an odorless, deadly poison that can kill you. Do not run the engine indoors or in an enclosed area.

- Read, understand, and follow all instructions on the machine and in the manual. Be thoroughly familiar with the controls and the proper use of the mower before starting.
- Do not put hands or feet near or under rotating parts. Keep clear of the discharge opening at all times.
- Only allow responsible individuals, who are familiar with the instructions, to operate the mower.
- Do not allow children or infirm persons to operate the mower.
- Clear the area of objects such as rocks, toys, wire, bones, sticks etc, which could be picked up and thrown by the blade.
- Avoid striking solid objects with the blade. Never deliberately mow over any object.
- Be sure the area is clear of other people before mowing. Stop mower if anyone enters the area.
- Do not operate the mower when barefoot or wearing open sandals. Always wear substantial foot wear.
- Do not pull mower backwards unless absolutely necessary. Look down and behind before and while moving backwards.
- Do not operate the mower without proper guards, plates, grass catcher or other safety protective devices in place.
- Stop the engine when crossing gravel drives, walks, or roads.
- Stop the engine whenever you leave the equipment, before cleaning the mower or unclogging the chute.
- Shut the engine off and wait until the blade comes to complete stop before removing grass catcher.
- Mow only in daylight or good artificial light.
- Do not operate the mower while under the influence of alcohol or drugs.
- Disengage the drive system, if so equipped, before starting the engine.
- Never operate mower in wet grass. Always be sure of your footing; keep a firm hold on the handle and walk; never run.
- If the mower strikes an object or starts to vibrate, immediately stop the engine, disconnect the wire from the spark plug, and examine the mower for damage.
- Always wear safety goggles or safety glasses with side shields when operating mower.

- Never make adjustments or repairs with the engine running. Disconnect the spark plug wire, and keep the wire away from the plug to prevent someone from accidentally starting the engine.
- Keep all nuts and bolts, especially blade attachment bolts, tight and keep equipment in good condition.
- Never tamper with safety devices. Check their proper operation regularly.
- Keep mower free of grass, leaves, or other debris build-up. Clean up oil or fuel spillage. Allow mower to cool before storing.
- Stop and inspect the equipment if you strike an object. Repair, if necessary, before restarting.
- Never attempt to make wheel height adjustments while the engine is running.
- Grass catcher components are subject to wear, damage, and deterioration, which could expose moving parts or allow objects to be thrown. Frequently check components and replace with genuine Pope parts, when necessary.
- Mower blades are sharp and can cut. Wrap the blade or wear gloves, and use extra caution when servicing them.
- Do not change the engine governor setting or over speed the engine.

Slope Operation

- Slopes are a major factor related to slip and fall accidents which can result in severe injury. All slopes require extra caution. If you feel uneasy on a slope, do not mow it.
- Mow across the face of slopes; never up and down. Exercise extreme caution when changing direction on slopes.
- Do not mow excessively steep slopes.
- Do not mow near drop-offs, ditches, or embankments. The operator could lose footing or balance.

Children

Tragic accidents can occur if the operator is not alert to the presence of children. Children are often attracted to the mower and the mowing activity. Never assume that children will remain where you last saw them.

- Keep children out of the mowing area and under the watchful care of a responsible adult.
- Be alert and turn mower off if children enter the area.
- Before and while moving backwards, look behind and down for small children.
- Never allow children to operate the mower.
- Use extra care when approaching blind corners, shrubs, trees, or other objects that may obscure vision.

Safety Decals

Safety Decals



43-8480



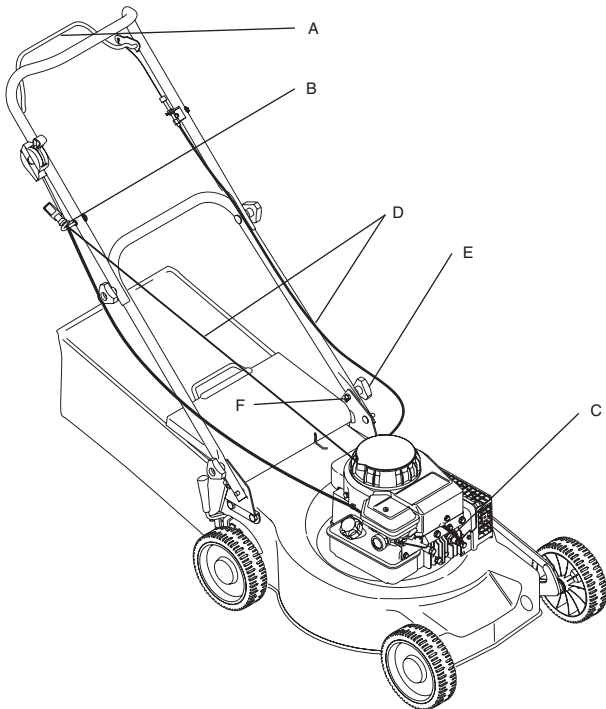
107-8971

1. Warning – read the Operator's Manual
2. Thrown object hazard – keep bystanders a safe distance from the machine
3. Warning – do not operate the mower without the rear catcher in place
4. Cutting/dismemberment hazard of hand or foot, mower blade – do not operate up and down slopes; stop the engine before leaving the operating position; and look behind you when backing

Important: Safety and instruction decals are located near areas of potential danger. Replace damaged decals.

Assembly

Assembly

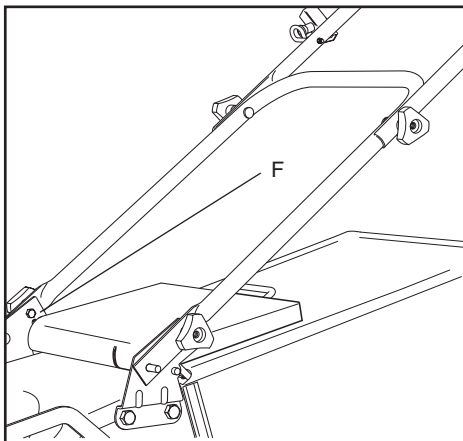


Remove the lawnmower from carton.

1. Carefully read and understand all instructions before attempting to assemble the mower.

For models 101PM35, 101PM2375, 101PM45 and 101PM450 only:

2. Fold the lower handle back and insert the coach bolt (F) from the inside out into the square hole and handle. Attach the plastic knob and tighten (E) see diagram.



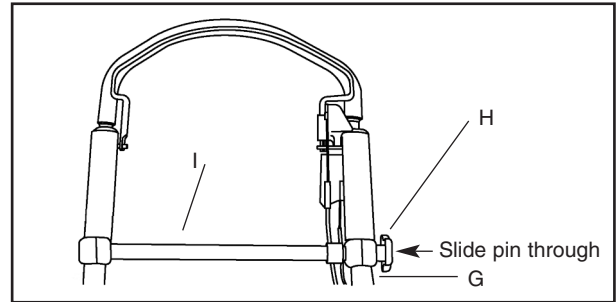
Note: There are 2 positions in which you can secure the lower handle, choose the one relevant for the user's comfort.

3. Affix the upper handle using coach bolt. Attach the plastic knob and tighten. Continue to Point 7.

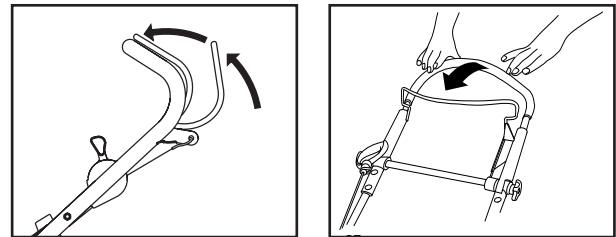
For the Auto Drive mower model 101SPM45 only:

4. Attach one lower handle to the deck, and insert the coach bolt (F) from the inside out into the square hole and handle. Attach the plastic knob and tighten (E). Repeat for the other handle.
5. Undo the coach bolt (H) from the assembly and remove the long pin from the support brace (I).

6. Slide the Auto Drive mechanism on to the top of the secured handles (G). The pin should be re-inserted through the support brace (I) and the entire mechanism secured with the coach bolt (H).



7. Disconnect the spark plug wire (C) see diagram.

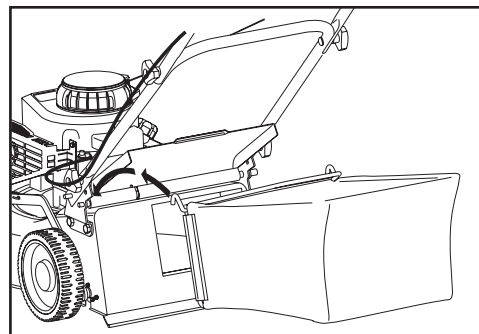


8. Engage the safety stop lever (A) by pushing towards the handlebar on models 101PM35, 101PM2375 and 101PM45. On the Auto Drive mower (model 101SPM45 only) the safety stop lever should be pulled toward you. Extend the starter cord to retainer (B) in upper handle.
9. Attach a cable tie around the throttle and blade brake cables (D).



Cables that are bent, kinked or damaged in any way during installation could cause an unsafe operating condition. An authorised Pope dealer should be contacted if this occurs. Do not attempt to repair cable.

10. Lift rear grass flap of the lawnmower and place the grass catcher frame side hook on the hinge shaft of the rear grass flap. The grass catcher is secured to the lawnmower housing when the rear grass flap is lowered on to the grass catcher. Spring tension from the rear grass flap will prevent removal of grass catcher during operation.



11. Remove plastic protection film from the engine.
12. Reconnect the spark plug wire (C) see diagram.

Operating Tips



Warning



Add oil before operating the mower. Refer to the “Before Operation Section” for instructions.

Operating Tips

- For best performance, install a new blade before the cutting season begins.
- Replace the blade when necessary with a Pope replacement blade.

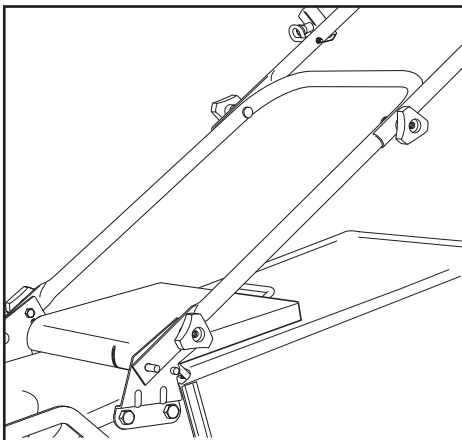
If the finished lawn appearance is unsatisfactory, try one or more of the following:

- Replace the blade.
- Walk at a slower pace while mowing.
- Raise the cutting height on your mower.
- Cut the grass more frequently.
- Overlap cutting swaths instead of cutting a full swath with each pass.

Folding the Handle

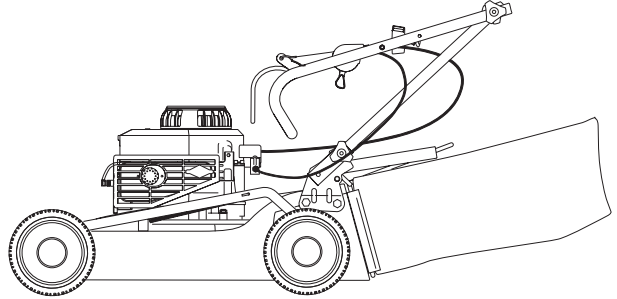
Folding or unfolding the handle improperly can damage the cables, causing an unsafe operating condition.

- **Do not damage the cables when folding or unfolding the handle.**
 - **If a cable is damaged, contact an Authorized Service Dealer.**
1. Loosen the handle knobs until you can move the upper handle freely.



2. Fold the upper handle forward.

Important: Route the cables to the outside of the handle knobs as you fold the upper handle.

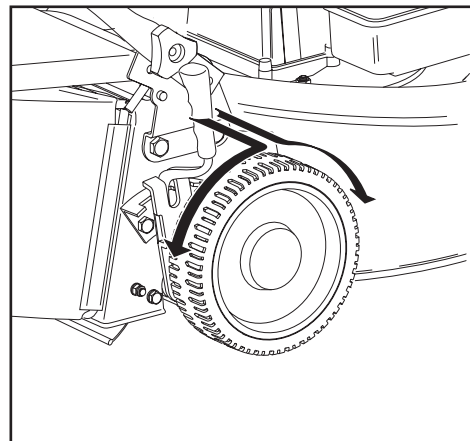


3. To unfold the handle, reverse the steps above.

Adjusting the cutting height may bring you into contact with the moving blade, causing serious injury.

- Stop the engine and wait for all moving parts to stop.
- Do not put your fingers under the housing when adjusting the cutting height.

Adjusting Cutting Height



- All four wheels are adjusted by a single lever.



Warning



- Pull adjustment lever toward wheel. To raise mower, move lever forward to desired position. To lower mower, move the lever toward the rear for the desired position.

Before Operating



Danger



Petrol is extremely flammable and explosive. A fire or explosion from petrol can burn you and others.

- To prevent a static charge from igniting the petrol, place the container and/or mower directly on the ground before filling, not in a vehicle or on an object.
- Fill the tank outdoors when the engine is cold. Wipe up spills.
- Do not handle petrol when smoking or around an open flame or sparks.
- Store petrol in an approved fuel container, out of the reach of children.
- Do not secure the safety stop lever in the engaged position in any way. This is a necessary safety feature and should not be disabled.



Warning



Please ensure you read the entire operator's manual before operating your Pope mower.

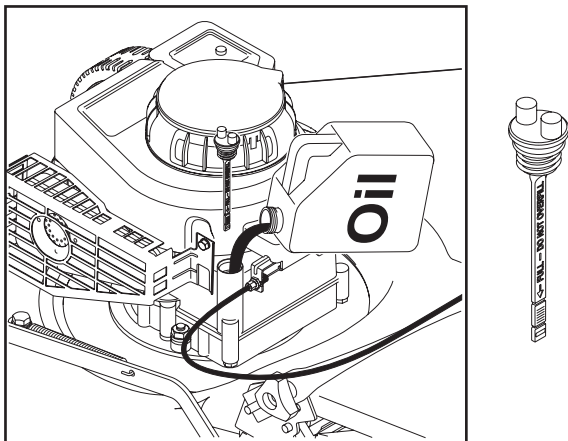
Filling the Engine with Oil

Your mower does not come with oil in the engine. Engine holds 0.6L (20oz) of oil. Use the correct oil type according to the Briggs & Stratton engine operation manual.

Note: Use of non specified oils in engine could cause engine damage or reduce service life.

Be sure lawnmower is level and area around oil fill is clean.

1. Remove the dipstick. Remove engine oil cap.



2. **Slowly** pour oil into the oil fill tube to raise the oil level to the **Full** mark on the dipstick. **Do not overfill.**

Note: Allow oil to settle down into the engine for accurate reading. To read proper level, tighten engine oil cap, then remove it to read the dipstick.

3. Install the dipstick securely. Check oil level before each use.

Important: Change the engine oil after the first 5-10 operating hours. Refer to Briggs and Stratton engine manual for correct procedure.

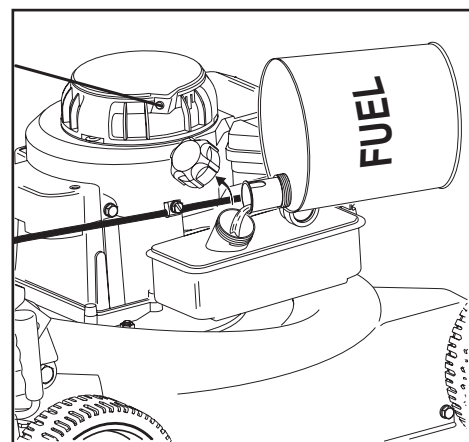
Filling the Fuel Tank

Fill the fuel tank with fresh unleaded regular petrol from a major name-brand service station.

Use fresh, clean, regular unleaded petrol with a minimum 87 octane. Do not mix oil with petrol.

Purchase fuel in quantities that can be used within 30 days to assure fuel freshness.

Important: Experience indicates that alcohol based fuels (called gasohol or using ethanol or methanol) can attract moisture which leads to separation and formation of acids during storage. Acidic fuel can damage the engine's fuel system. This type of fuel should be emptied before storage of 30 days or longer. Drain the fuel tank, start engine and let it run until the fuel lines and carburetor are empty. Use fresh fuel next season. See storage instruction for additional information. Never use engine or carburetor cleaning products in fuel tank or permanent damage may occur.



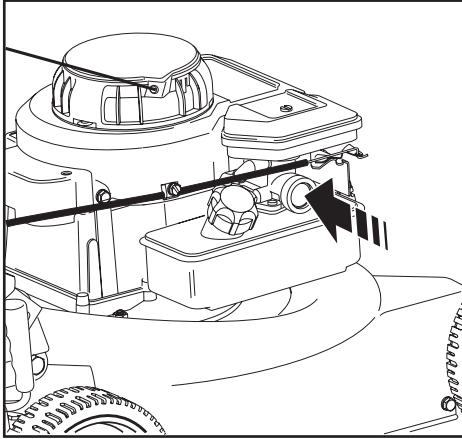
Operation

Starting the Engine

- Move the throttle control lever to fast position.

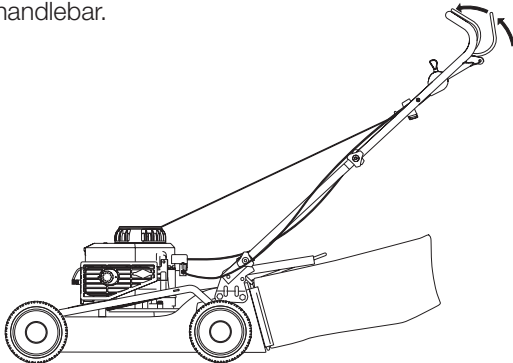
Note: This fast position should be maintained while mowing grass to ensure effectiveness of grass catcher and overloading engine.

- Prime engine 3 times according to engine manual.

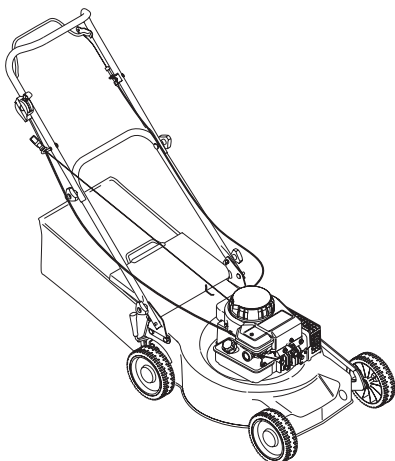


Note: If the air temperature is below 55°F (13°C), firmly push the primer in 5 times.

- Engage the safety stop lever by pushing towards handlebar.



- Grasp the rewind starter handle and pull start the engine.



If the mower does not start in 1 or 2 pulls, press the primer button 1 or 2 times and try starting it again.

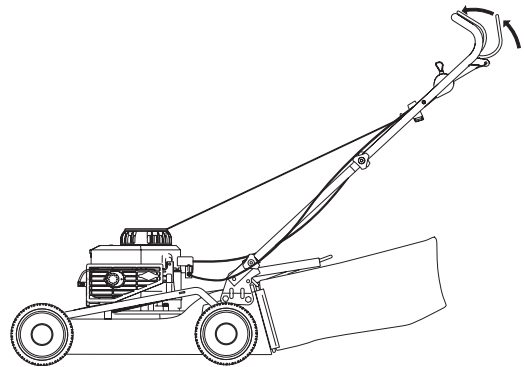
Stopping the Engine

To stop the engine

- Move the throttle control lever to the SLOW position.
- Release the safety stop lever to brake and stop the engine. This will also occur if lever is released in emergency conditions.
- Remove the spark plug cover after stopping the engine to avoid accidental starting.

Caution

Important: When you release the Safety stop lever, both the engine and blade should stop within 3 seconds. If they do not stop properly, stop using your mower immediately and contact your Authorised Service Dealer.



Operation – continued

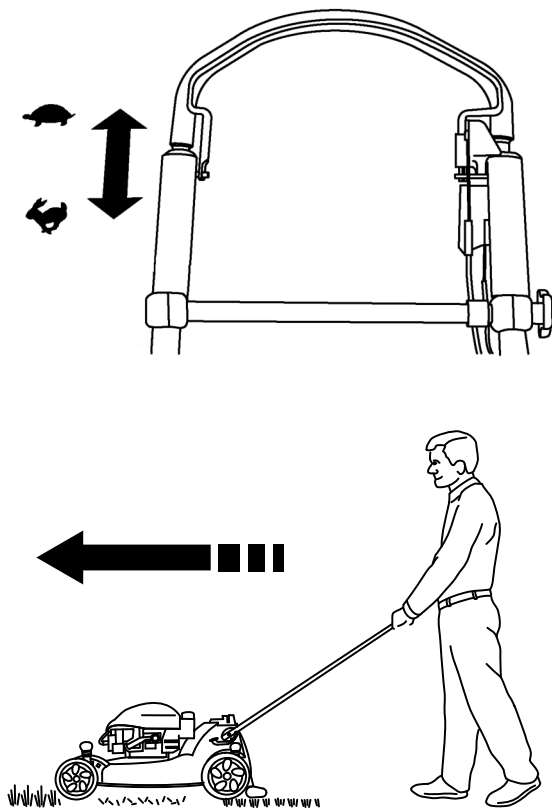
Using the Auto-Drive System

(Model 101SPM45 only)

Start the engine as indicated.

Note: The Auto Drive Mower does not have a throttle control lever.

- To operate the Auto-Drive System pull the safety stop lever and grasp with the upper handle. Then simply walk with your hands on the upper handle and your elbows at your sides, and the mower will automatically keep pace with you.



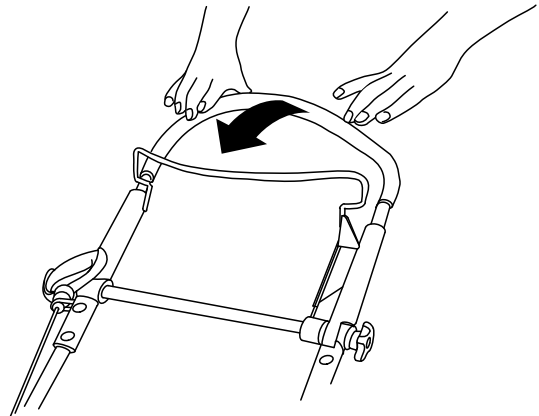
Stopping the Engine

To stop the engine, stop walking.

- Release the safety stop lever to brake and stop the engine. This will also occur if lever is released in emergency conditions.
- Remove the spark plug cover after stopping the engine to avoid accidental starting.

Caution

Important: When you release the Safety stop lever, both the engine and blade should stop within 3 seconds. If they do not stop properly, stop using your mower immediately and contact your Authorised Service Dealer.



Mowing

Caution

Warning: The grass catcher must be installed when mowing.

- For best results, adjust the lawnmower cutting height so that the lawnmower cuts off only the top 1/3 of the grass blades. If the lawn is overgrown it will be necessary to raise the height of the cut to reduce pushing effort and to keep from overloading the engine.
- Press down the push handle and lift the front wheels to make a turn with your Pope mower. Be careful of the rotating blades.

Maintenance

Note: Determine the left and right sides of the mower by standing in the operating position.

Recommended Maintenance Schedule

Important: Refer to your engine operator's manual for additional maintenance procedures.

Maintenance Service	Interval Maintenance Procedure
Each Use	<ul style="list-style-type: none"> Check the engine oil level. Remove grass clippings and dirt from under the housing.
1 Year (25 Hours) ¹	<ul style="list-style-type: none"> Replace the air filter; replace it more frequently in dusty operating conditions. Change the engine oil. ² Replace the blade or have the blade sharpened; replace it or have it sharpened more frequently if the edge dulls quickly.
4 Years (100 Hours) ¹	<ul style="list-style-type: none"> Replace the spark plug (refer to your engine operator's manual). Clean the cooling system (refer to your engine operator's manual).
Annual Storage	<ul style="list-style-type: none"> Empty the fuel tank before repairs as directed or before annual storage.

¹ Whichever comes first

² Change the engine oil after the first 5-10 operating hours.

Preparing for Maintenance

- Stop the engine and wait for all moving parts to stop.
- Disconnect the spark plug wire from the spark plug before performing any maintenance procedure.
- After performing the maintenance procedure(s), connect the spark plug wire to the spark plug.

Note: Before tipping the mower to change the oil or replace the blade, allow the fuel tank to run dry through normal usage. If you must tip the mower prior to running out of fuel, use a hand fuel pump to remove the fuel. Always tip the mower onto the **right** side.

Note: Tipping the mower over incorrectly could cause oil to enter parts of the engine that could cause problems. If this occurs contact your authorized Pope dealer immediately before using mower.



Warning

The blade is sharp; contacting the blade can result in serious personal injury.

Wear cloth or leather gloves when servicing the blade.

Replacing the Blade

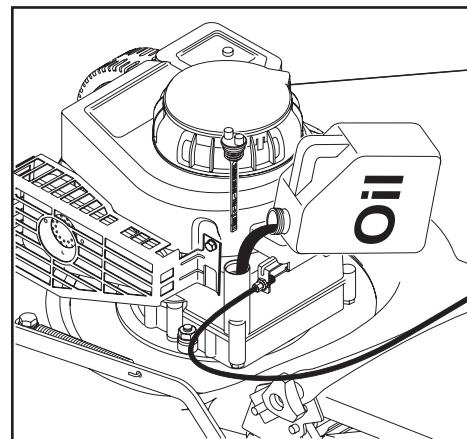
Check lawnmower blade and adaptor frequently. Install a new blade and/or blade adaptor if blade and adaptor bend or are worn.

Important: You will need a torque wrench to install the blade properly (54Nm to 61Nm). If you do not have a torque wrench or are uncomfortable performing this procedure, contact an Authorized Service Dealer.

Examine the blade whenever you run out of petrol. If the blade is damaged or cracked, replace it immediately. If the blade edge is dull or nicked, have it sharpened or replace it.

Checking the Engine Oil Level

- Remove the dipstick, wipe it clean, and fully install the dipstick.



- Remove the dipstick and check the oil level. If the oil level is below the **Add** mark on the dipstick, **slowly** pour oil into the oil fill tube to raise the oil level to the **Full** mark on the dipstick. **Do not overfill.**
(Max. fill:0.6L (20 oz.), type: SAE 30 detergent oil.)
- Install the dipstick.

Maintenance – continued

Air Cleaner

Wash air cleaner every 25 hours.

- Keep rewind starter, cooling fins and other cooling system parts clean.

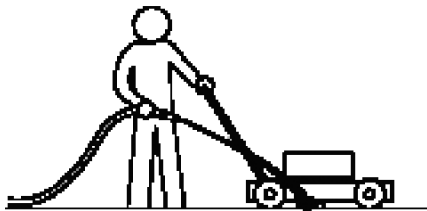
Changing the Blade

1. Disconnect the spark plug wire from the spark plug.
2. Tip the mower onto the **right** side.
3. Use a block of wood to hold the blade steady.
4. Remove the blade, saving all mounting hardware.
5. Install the new blade and all mounting hardware.

Important: Position the curved ends of the blade to point toward the mower.

Cleaning the Mower

1. With the engine running on a flat paved surface, spray a stream of water in front of the **right rear** wheel. Engage the blade.



1093

The water will splash into the path of the blade, cleaning out the clippings.

2. When no more clippings come out, stop the water and move the mower to a dry area.

Storage

Store the mower in a cool, clean, dry place.

Preparing the Mower for Storage



Warning



Petrol vapors can explode.

- **Do not store petrol more than 30 days.**
 - **Do not store the mower in an enclosure near a naked flame.**
 - **Allow the engine to cool before storing it.**
1. On the last refueling of the year, add fuel stabilizer to the fuel as directed by the engine manufacturer.
 2. Run the mower until the engine stops from running out of fuel.
 3. Prime the engine and start it again.
 4. Allow the engine to run until it stops. When you can no longer start the engine, it is sufficiently dry.
 5. Disconnect the wire from the spark plug and connect the wire onto the retaining post.
 6. Remove the spark plug, add 1 oz. (30 ml) of oil through the spark plug hole, and pull the starter rope **slowly** several times to distribute oil throughout the cylinder to prevent cylinder corrosion during the off-season.
 7. Loosely install the spark plug.
 8. Tighten all nuts, bolts, and screws.

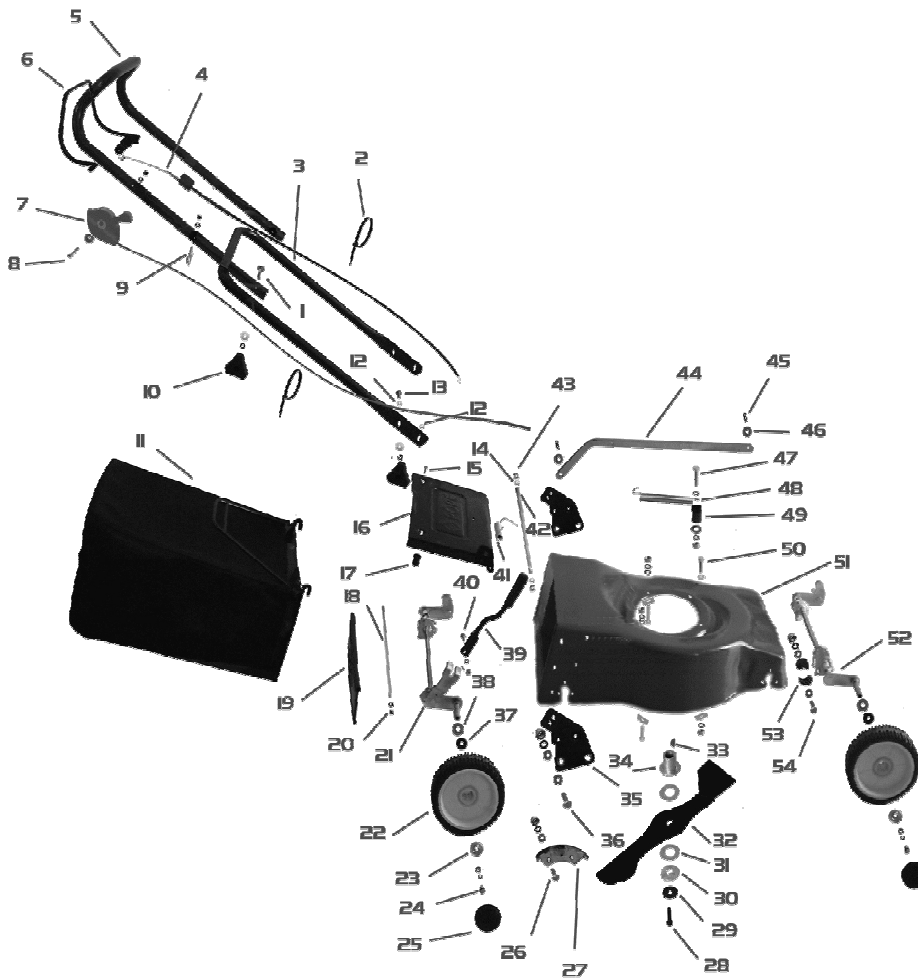
Removing the Mower from Storage

1. Remove the spark plug and spin the engine rapidly using the starter to blow the excess oil from the cylinder.
2. Install the spark plug and tighten it with a torque wrench to 15 ft-lb (20 N_m).
3. Connect the wire to the spark plug.

Spare Parts

For spare parts
as listed below, contact
Pope Customer Service
on 1300 134 880

Item No.	Description	Pope Part No.	Qty
3	Lower Handle	101PM034	1
5	Upper Handle	101PM031	1
9	Rope Loop	101PM033	1
10	Handle Knob	101PM029	4
11	Grass Bag	101PM030	1
22	Wheel	101PM019	4
32	Lawn Mower Blade	101PM375B	1



Note: The handle assembly as shown above is for the mowers 101PM35, 101PM2375, 101PM45 and 101PM450. It does not represent the handle for the Auto Drive Mower (101SPM45).

The Pope Guarantee

Full Warranty for Residential Use

Toro Australia Pty Limited promises to repair any Pope product used for *residential purposes** if it is defective in materials or workmanship; or if it stops functioning due to the failure of a component. The following time period applies from the date of purchase:

Product	Warranty Period
• Walk Mowers with steel decks	1 year full warranty

This warranty covers the cost of parts and labour, but you must pay transportation costs

Limited Warranty for Commercial Use

Pope Walk Mowers used for commercial, institutional, or rental use are only warranted for 45 days from the date of purchase against defects in materials or workmanship; and components failing due to normal wear are not covered by this limited warranty.

Items and Conditions Not Covered

This is the only express warranty for the listed product; however this express warranty does not cover the following:

- The cost of regular maintenance, servicing or parts, such as filters, fuel, lubricants, oil changes, spark plugs, air filter, blade sharpening, worn blade, cable/linkage adjustments, or brake and clutch adjustments
- Any product or part which has been altered or misused or required replacement or repair due to accidents or lack of proper maintenance
- Repairs necessary due to improper preparation of the mower prior to any period of non-use over three months
- Pickup and delivery charges
- Operational misuse, neglect, or accidents
- Repairs or attempted repairs by anyone other than a Pope Service outlet
- Repairs (or adjustments) made in an attempt to correct starting difficulties which have occurred due to any of the following:
 - failure to follow proper maintenance procedures
 - rotary mower blade striking an object
 - contaminants in the fuel system
 - improper fuel or fuel/oil mixture (consult your Operator's Manual if in doubt)
 - failure to drain the fuel system prior to any period of non-use over three months

Owners Responsibilities

You must maintain your Pope product by following the maintenance procedures described in the Operator's Manual. All such routine maintenance, whether performed by a dealer or by you, is at your expense.

Instructions for Obtaining Warranty Service

If you think that your Pope product is defective in materials or workmanship, or if a normal, able-bodied adult can no longer start your product's engine in one or two pulls, you should follow this procedure:

1. Contact any Pope Authorised Service Dealer to arrange service at their dealership.
[To locate a dealer convenient to you, refer to page 12 of this manual or access our website at www.toro.com.au]
Customers may also call 1300 134 880.
2. Take the product and your proof of purchase (sales receipt) to the Service Dealer.
3. If for any reason you are dissatisfied with the Service Dealer's analysis or with the assistance provided, please contact us directly at our Customer Service department.

General Conditions

All repairs covered by this warranty must be performed by an Authorised Pope Service Dealer using Pope approved replacement parts. To the fullest extent permitted by law Toro Australia Pty Limited is not liable for any indirect, incidental, or consequential loss or damage in connection with the use of the Pope product covered by this warranty or for any cost or expense of providing substitute equipment or service during any period of malfunction or non-use pending completion of repairs under this warranty. This warranty is strictly limited to repair by a Pope Service Dealer.

This warranty does not exclude any condition or warranty implied by the Trade Practices Act 1974 or any other relevant legislation which implies any condition which cannot be excluded.

[Residential purpose means use of the product on the same lot as your home. Use at more than one location is considered commercial use, and the commercial use warranty would apply]*

Authorised Pope Service Dealers

AUST. CAPITAL TERRITORY

Mitchell Lawnmower
Centre
MITCHELL
(02) 6241 4806

NEW SOUTH WALES

Agrifarm Implements
TAREE
(02) 6552 6888

Barry Austin Mowers
FORSTER
(02) 6554 6935

Bega Farm Supplies
BEGA
(02) 6492 4466

Bike and Power
DURAL
(02) 9651 7170

Bill's Mudgee Chainsaw
Centre
MUDGEE
(02) 6372 4122

Broken Hill Mower &
Engine Centre
BROKEN HILL
(08) 8087 9712

Brook Outdoors
MUSWELLBROOK
(02) 6543 1066

Byron Mowers
BYRON BAY
(02) 6685 6366

Central West Mowers
& Chainsaws
ORANGE
(02) 6362 0681

Colin McIntyre Mowers
PARKES
(02) 6869 1003

Cooma Power Equipment
COOMA
(02) 6452 2622

Davis Mitchell Marine
EDEN
(02) 6496 1339

Deni Bike & Boat
DENILIQUIN
(03) 5881 5255

Dick's Mower Repairs
MULLUMBIMBY
(02) 6684 2563

Dubbo Mowers &
Chainsaws
DUBBO
(02) 6882 3122

Grafton Power Products
GRAFTON
(02) 6642 2880

Greater West Power Tools
WETHERILL PARK
(02) 9756 5081

Harvey's Mower Centre
WAGGA WAGGA
(02) 6925 2234

Keith Simmons Engineering
YOUNG
(02) 6382 3999

Lawnpower Pty Ltd
NOWRA
(02) 4421 4466

Moruya Mower &
Chainsaw Centre
MORUYA
(02) 4474 3322

Mower City Tweed
Heads Pty
TWEED HEADS SOUTH
(07) 5524 4855

Paul's Mowers
ALBION PARK RAIL
(02) 4256 4866

Ranger Geale Enterprises
GOULBURN
(02) 4821 4266

Revit Bikes
PORT MACQUARIE
(02) 6584 2666

Riverstone Mower World
RIVERSTONE
(02) 9838 1400

Rutherford Mowers &
Power Products
TELARAH
(02) 4932 3488

S&T Haddad Mowers
MOREE
(02) 6752 4906

Scone Outdoors
SCONE
(02) 6545 3033

Small Engine Services
GLEN INNES
(02) 6732 1441

Stott Mowers
WARATAH
(02) 4967 1308

Tamworth Small Engines
TAMWORTH
(02) 6765 9737

Tinks
MACKSVILLE
(02) 6568 2344

Village Mowers &
Power Tools
MINTO
(02) 9605 1100

WH Ireland & Sons
MITTAGONG
(02) 4872 1999

NORTHERN TERRITORY

Coolalinga Mowers
COOLALINGA
(08) 8983 1449

QUEENSLAND

Aussie Mower Centre
HERVEY BAY
(07) 4125 3152

Braschs Pty Ltd
CAIRNS
(07) 4051 1411

Coastal Hardware
MINYAMA
(07) 5444 0055

David Evans Group
GATTON
(07) 5462 1266

David Evans Group
BILOELA
(07) 4992 1099

Dover & Sons
BEAUDESERT
(07) 5541 1977

Dover & Sons
BOONAH
(07) 5463 1388

Downs Mower Centre
TOOWOOMBA
(07) 4632 4000

Estate Mower Service
TOWNSVILLE
(07) 4772 3674

Fernvale Mower &
Chainsaw Centre
LOWOOD
(07) 5426 1719

Jackson's Mower Centre
MACKAY
(07) 4957 5450

Kel's Chainsaws &
Small Motors
EMERALD
(07) 4982 4701

Keppel Outdoor Products
YEPPON
(07) 4925 0600

Mark's S.O.S.
PITTSWORTH
(07) 4693 3703

Mower World
OXENFORD
(07) 5573 4388

Nanango Motors
NANANGO
(07) 4163 1108

Nowa Power Products
BUNDBERG
(07) 4153 1722

Pine Rivers Mowers
KALLANGUR

Pumps, Solar & Sml Eng.
ROMA
(07) 4622 4528

R & G Small Engine
Repairs
MAREEBA
(07) 4092 4325

Rimrock Agencies
ROCKHAMPTON
(07) 4927 7033

Samford Valley Building
Supplies & Landscaping
SAMFORD
(07) 3289 6222

Stihl Shop Labrador
LABRADOR
(07) 5537 3618

Sunstate AG
DALBY
(07) 4672 3333

Tannum Mower Centre
TANNUM SANDS
(07) 4973 9895

The Big Mower
BEERWAH
(07) 5494 6151

The Mower Place
BROWNS PLAINS
(07) 3802 4700

The Mower Place
CAPALABA
(07) 3245 6011

The Mower Place
KENMORE
(07) 3503 8888

The Mower Shop
EVERTON HILLS
(07) 3353 3176

The Mower Warehouse
CABOOLTURE
(07) 5495 8822

The Watershed
INNISFAIL
(07) 4061 6177

Vic's Mowers & Small Engines
MOSSMAN
(07) 4098 3462

Westside Chainsaws
& Mowers
WARWICK
(07) 4661 2032

SOUTH AUSTRALIA

Peter Jennings Pumps
MT GAMBIER
(08) 8725 0722

TASMANIA

Central Coast Mower Market
WEST ULVERSTONE
(03) 6425 3318

Eastern Shore Mowers
& Cycles
LINDISFARINE
(03) 6243 7776

Pellows Saws & Mowers
INVERMAY
(03) 6326 5722

VICTORIA

Benalla Chainsaws
BENALLA
(03) 5762 6177

Bob Crosby & Co.
WODONGA
(02) 6024 1333

Bolton Motorcycles &
Power Equipment
KYNETON
(03) 5422 2255

Carmichael's Mowers
COWES
(03) 5952 3999

Central Werribee Mower
Power
WERRIBEE
(03) 9742 7038

Dawn Mowers
SURREY HILLS
(03) 9830 5444

Drouin Mowers & Chainsaws
DROUIN
(03) 5625 1079

Gendore
TOORADIN
(03) 5998 3216

George's Mowers
MOE
(03) 5127 5045

Gisborne Power Products
GISBORNE
(03) 5428 8844

Hastings Mowers
HASTINGS
(03) 5979 1382

Henderson Mowers
BALLARAT
(03) 5331 1618

JR's Mowers & Chainsaws
BAIRNSDALE
(03) 5152 3202

Magic Mowers
MILDURA
(03) 5022 7088

Marriott's Motor Cycles
& Power
LEONGATHA
(03) 5662 2028

Midstate Machinery
HUNTLY
(03) 5448 8557

Molin Motorcycles &
Marine
KOONDROOK
(03) 5451 1500

Mortons Machinery
RINGWOOD
(03) 9870 7133

Mower Corner
COLAC
(03) 5231 6466

Mowers Galore
GROVEDALE
(03) 5244 0620

Mowers Galore
NORTH GEELONG
(03) 5272 1066

Powerquip Mower &
Chainsaw Centre
HALLAM
(03) 9793 3177

Speedie Mower Service
GLENROY
(03) 9306 4002

Stihl Echuca Sales &
Service
ECHUCA
(03) 5480 9566

Stihl Shop Seymour
SEYMOUR
(03) 5799 1215

Swayn & McCabe
WARRNAMBOOL
(03) 5561 4777

T&I Horticulture
SWAN HILL
(03) 5032 4555

Vin Rowe Farm Machinery
WARRAGUL
(03) 5623 1362

Yarra Glen Mower Centre
YARRA GLEN
(03) 9730 1988

WESTERN AUSTRALIA

Busselton Mower World
BUSSELTON
(08) 9754 1969

Eastern Hills Saws &
Mowers
MUNDARING
(08) 9295 2466

Geraldton Mower Repairs
GERALDTON
(08) 9964 4036

JM Sales
MANDURAH
(08) 9581 7162